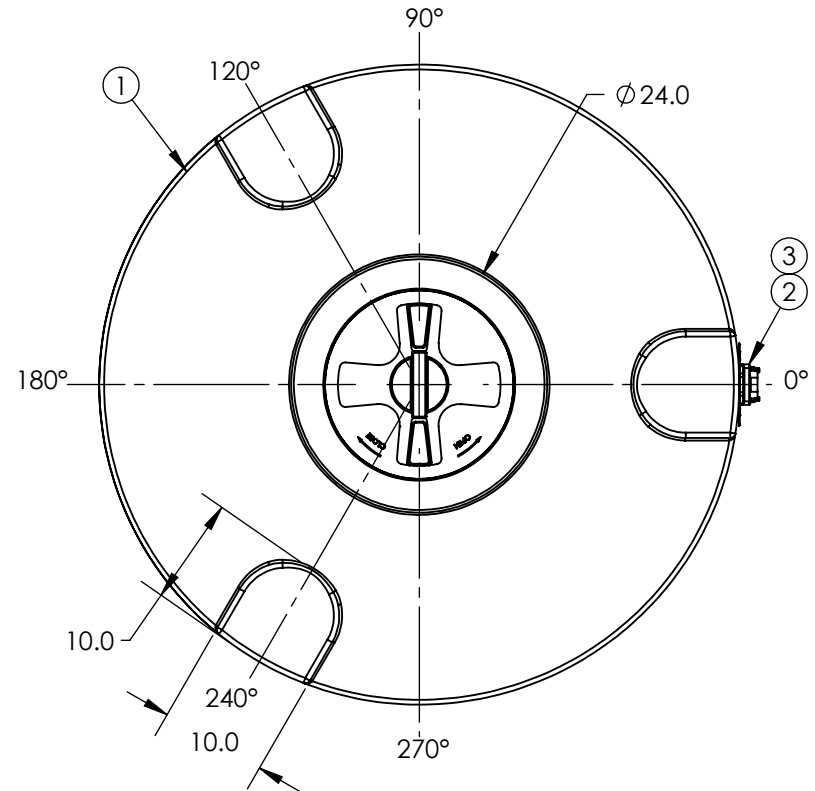
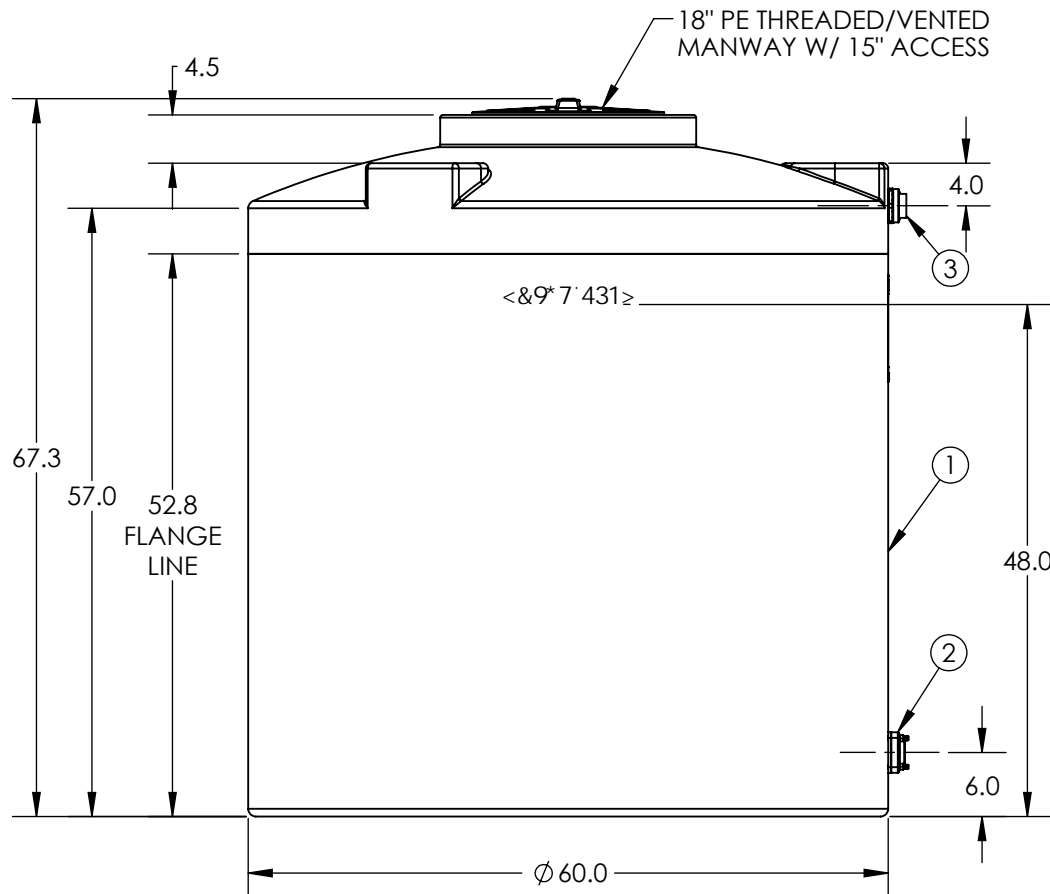


PART NUMBER	DESCRIPTION
1700200W94203	ASM TK 710VCT X 48 HD/BLK WATER
1700200W99803	ASM TK 710VCT X 48 HD/GDO WATER
1700200W91603	ASM TK 710VCT X 48 HD/TAN WATER



3	1	34100144	FTG PP 1-1/2IN BH EPDM
2	1	34100103	FTG PP 2IN BLTD EPDM
1	1	1700200W__01	ASM TK 710VDT X 60 WATER NH
ITEM NO.	QTY.	PART NUMBER	DESCRIPTION
DO NOT SCALE		DRAWN BY	REVISION
Released		KB	A
© SNYDER INDUSTRIES INC., 2015		TITLE: <b>ASM TK 710VDT X 60 WATER</b>	
ALL DIMENSIONS, DESIGNS, AND INFORMATION ON THIS PRINT MUST BE CONSIDERED PROPRIETARY TO SNYDER INDUSTRIES, INC. AND MAY NOT BE USED, COPIED, OR DISTRIBUTED WITHOUT WRITTEN PERMISSION OF AN OFFICER (OR HIS AGENT) OF THE FIRM.		PART NO. <b>SEE CHART</b>	
		ENG. ID. <b>1700200W__03</b>	

**\*ALL EXTERNAL PIPING MUST BE INDEPENDENTLY SUPPORTED.**  
**\*ONLY BASE FITTINGS TO BE LEFT INSTALLED AT TIME OF SHIPMENT PER SII PROCEDURE.**  
**\*Consult Snyder's Guidelines for Use and Installation prior to delivery.**  
**Available on-line at <http://www.snyderindustriestanks.com/Technical>**  
**ALL DIMENSIONS ARE IN INCHES, NOMINAL, & SUBJECT TO CHANGE WITHOUT NOTICE.**  
**ALL DIMENSIONS ON ROTATIONAL MOLDED PARTS ARE SUBJECT TO A  $\pm$  3% TOLERANCE.**