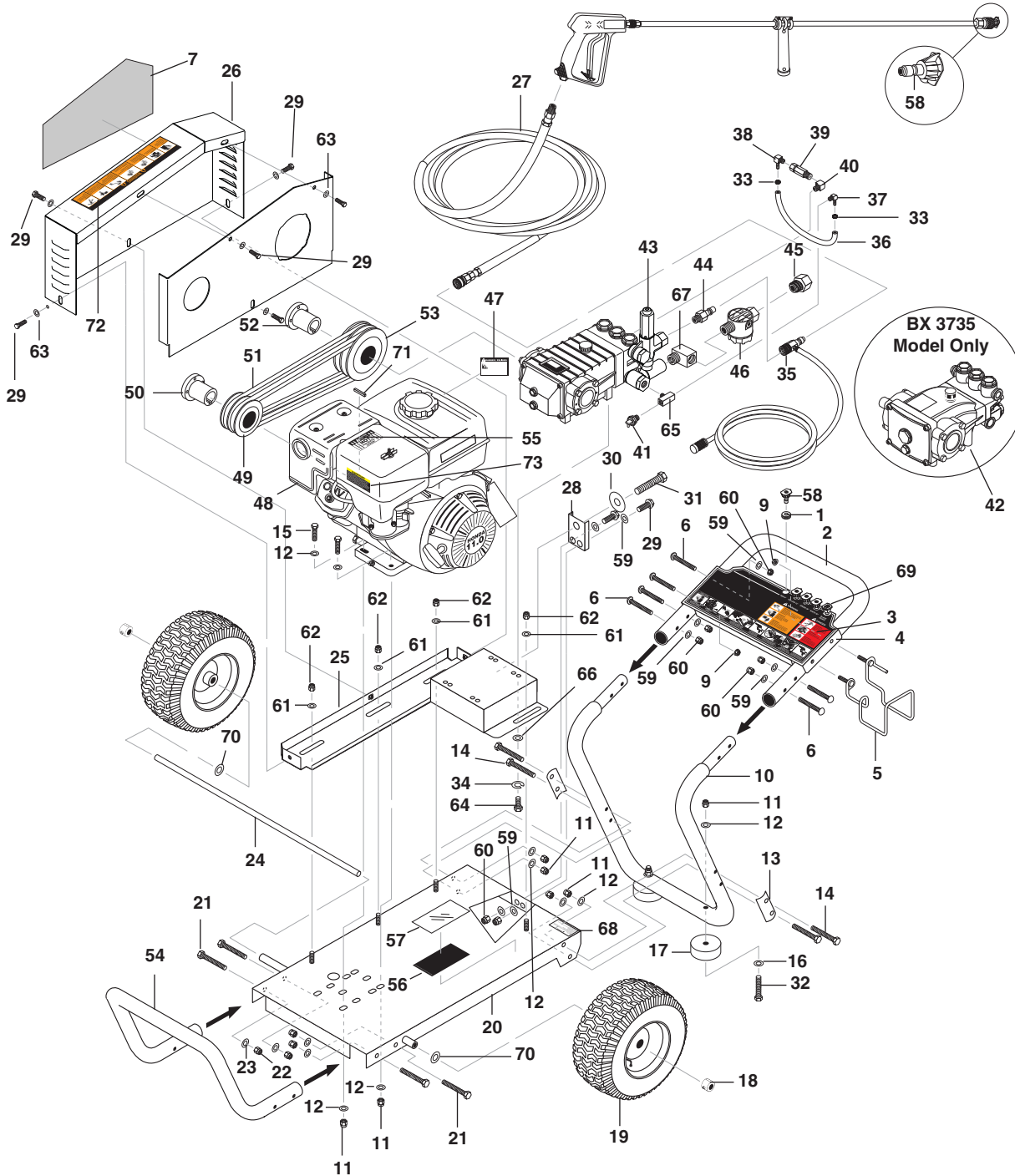


EXPLODED VIEW - 3030, 3735



EXPLODED VIEW PARTS LIST - 3030, 3735

ITEM	PART NO.	DESCRIPTION	QTY	ITEM	PART NO.	DESCRIPTION	QTY
1	9.802-064.0	Grommet, Rubber, Nozzle Holder	5	7	8.901-145.0	Label, Belt Guard (BX)	1
2	8.719-938.0	Handle, Grab, Red	1	8			
3	8.900-910.0	Label, BX Models	1	9	9.802-778.0	Nut, 5/16" Whiz Loc Flange	2
4	8.912-081.0	Plate, Warning/Instr., Red	1	10	8.719-937.0	Handle, Lower Grab, Red	1
5	9.803-098.0	Hanger, Hose/Wand	1	11	9.802-779.0	Nut, 3/8", ESNA, NC	10
6	9.802-706.0	Bolt, Carriage, 1/4"-20 x 1-3/4", Zinc	6	12	9.802-807.0	Washer, 3/8", SAE, Flat	14
				13	8.912-061.0	Retainer Bracket, Handle, Red	2

EXPLODED VIEW PARTS LIST - 3030, 3735

ITEM	PART NO.	DESCRIPTION	QTY	ITEM	PART NO.	DESCRIPTION	QTY
14	9.802-728.0	Bolt, 3/8" x 2" NC, HH	4	47	9.800-008.0	Label, Danger Cool Engine	1
15	9.802-727.0	Bolt, 3/8" x 1-3/4", Tap	4	48	Engine, See Specifications Pages		
16	9.802-817.0	Washer, 3/8" x 1", Steel	2	49	Engine Pulley, See Specifications Pages		
17	9.802-066.0	Pad, Soft Rubber	2	50	Engine Bushing, See Specifications Pages		
18	9.802-782.0	Axle Hub Black	2	51	Belts, See Specifications Pages		
19	9.802-271.0	Wheel & Tire Assy., 6" Steel Rim w/Tube	2	52	Pump Bushing, See Specifications Pages		
20	8.912-069.0	Frame Assy, Large	1	53	Pump Pulley, See Specifications Pages		
21	9.802-712.0	Bolt, 5/16" x 1-3/4", NC, Carriage, Zinc	4	54	8.719-939.0 Handle, Bumper, Red	1	
22	9.802-776.0	Nut, 5/16", ESNA, NC	4	55	9.800-006.0 Label, Hot/Caliente w/Arrows, Warning	1	
23	8.718-980.0	Washer, 5/16" Flat, SAE	4	56	8.932-968.0 Label, Intended For Outdoor Use	1	
24	8.911-226.0	Axle, 5/8" x 27" L	1	57	9.800-034.0 Label, Clear Lexan, 2-1/4" x 4-1/2"	1	
25	8.911-226.0	Slider, Pump	1	58	8.712-337.0 Nozzle, SAQCMEG, 0003.5, Red (3030)	1	
26	8.917-888.0	Assy Red Slider Pump/ Belt Guard Mount	1		8.712-338.0 Nozzle, SAQCMEG 1503.5, Yellow (3030)	1	
27	Hose, See Specifications Pages				8.712-339.0 Nozzle, SAQCMEG, 2503.5, Green (3030)	1	
28	8.912-082.0	Bracket, Take Up, CW, Red	1		8.712-340.0 Nozzle, SAQCMEG 4003.5, White (3030)	1	
29	9.802-700.0	Screw, 1/4" x 3/4" HH NC	8		8.712-345.0 Nozzle, SAQCMEG, 0004.5, Red (3735, 3735)	1	
30	9.802-809.0	Washer, 1/2", Flat, SAE	1		8.712-346.0 Nozzle, SAQCMEG 1504.0, Yellow (3735, 3735)	1	
31	9.802-740.0	Bolt, 1/2" x 3-1/2" HEX	1		8.712-347.0 Nozzle, SAQCMEG, 2504.0, Green (3735, 3735)	1	
32	9.802-730.0	Bolt, 3/8" x 2-1/4"	2		8.712-348.0 Nozzle, SAQCMEG 4004.0, White (3735, 3735)	1	
33	6.390-126.0	Clamp, Hose, .46-54 ST	2	59	9.802-802.0 Washer, 1/4" Flat	10	
34	9.802-813.0	Washer, 5/16" Lock (3030)	4	60	9.802-773.0 Nut, 1/4" ESNA	8	
	9.802-816.0	Washer, 7/16" Lock, Split (3735)	4	61	8.718-980.0 Washer, 5/16" Flat	4	
35	9.802-225.0	Injector, Detergent Assy, Non-Adj, 3-5 GPM, 0.083	1	62	9.802-776.0 Nut, 5/16" ESNA	4	
36	9.802-254.0	Hose, 1/4", Push-On, Fuel Line	1 ft.	63	9.802-802.0 Washer, 1/4"	6	
37	8.706-958.0	Hose Barb, 1/4" Barb x 1/4" ML Pipe, 90° (3030, 3735)	1	64	9.802-741.0 Bolt, 8mm x 30mm Hex(3030)	4	
38	8.706-940.0	Hose Barb, 1/4" Barb x 1/8" ML Pipe (3735)	1		9.802-744.0 Bolt, 10mm x 20mm (3735)	4	
	8.706-955.0	Hose Barb 1/4" Barb x 1/8" ML Pipe 90° (3030)	1	65	8.706-854.0 Tee, 1/4" Branch (3030, 3735)	1	
39	9.802-190.0	Valve, E-Z Start, 3/8" MPT x 1/8" FPT (3735)	1	66	8.718-980.0 Washer, 5/16" Flat (3030)	4	
	9.804-065.0	Valve, EZ Start 1/4" (3030)	1		9.802-807.0 Washer, 3/8" Flat (3735)	4	
40	8.706-207.0	Elbow, 3/8", Street (3735)	1	67	8.706-829.0 Elbow, 1/2" Street, Brass	1	
	8.706-200.0	Elbow, 1/4" Street (3030)	1	68	9.800-049.0 Label, Cleaning Solution	1	
41	9.804-025.0	Pump Protector, 1/4" PTP	1	69	8.712-398.0 Nozzle, Compl, Detergent	1	
42	Pump, See Specifications Pages			70	9.802-810.0 Washer, 5/8" Flat	2	
43	Unloader, See Specifications Pages			71	9.802-959.0 Key, .247" Sqr. x 2.125"	1	
44	9.802-171.0	Nipple, 3/8" x 3/8" NPT ST Male	1	72	9.800-036.0 Label, Warning, Pictorial, Sm	1	
45	9.802-146.0	Swivel, 1/2" MP x 3/4" GHF w/Strainer	1	73	8.917-015.0 Label, Regulation 4442.6	1	
46	9.802-163.0	Strainer, 1/2" PA, Inline Plastic	1				

SPECIFICATIONS

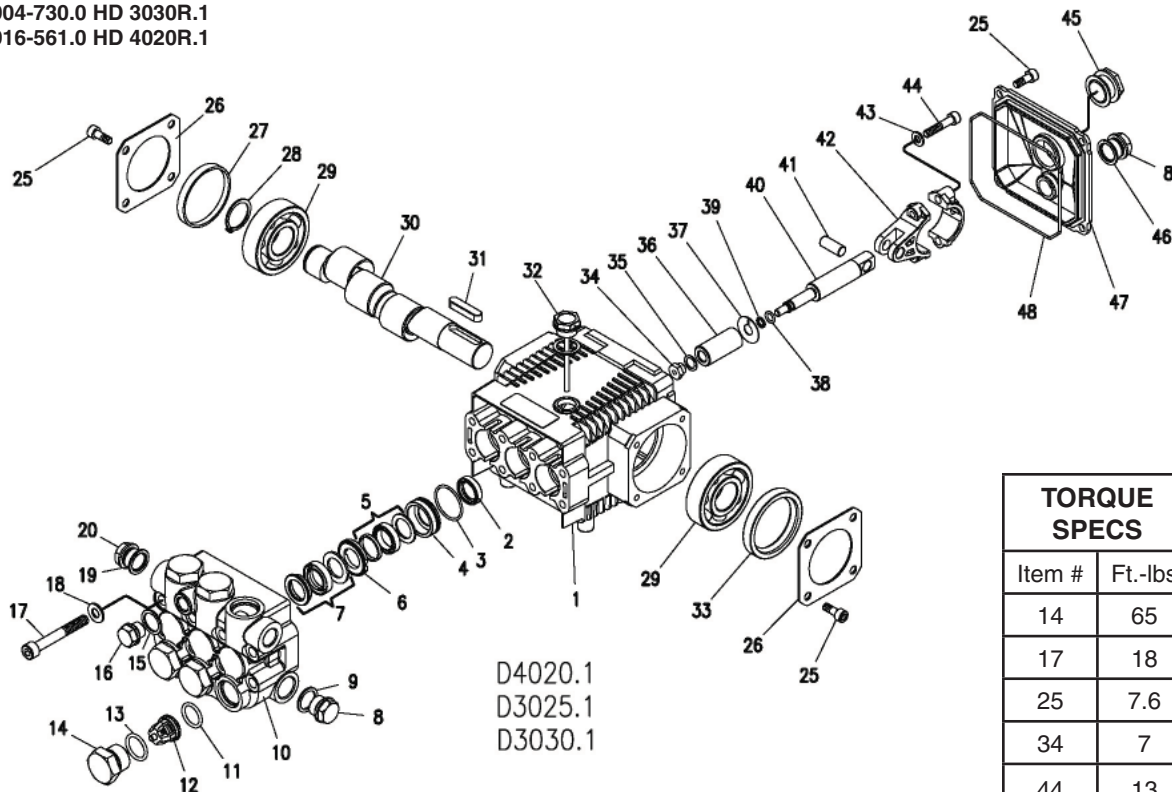
Model	GPM	Pressure (PSI)	Nozzle Size	Pump	Pump Part #	Unloader Part #	Engine Model	Engine Part #	Pump Pulley
BX-282039	2.8	2000	4.0	HD3030	8.904-730.0	9.175-018.0	GX160 (163cc)	9.802-316.0	AK74H
BX-252739	2.5	2700	3.0	HD3030	8.904-730.0	9.803-899.0	GX200 (196cc)	9.802-317.0	BK80H
BX-303039	3.0	3000	3.5	HD3030	8.904-730.0	9.803-899.0	GX270 (270cc)	9.802-315.0	2BK80H
BX-373539	3.7	3500	4.0	HM4035R.3	8.751-180.0	9.175-018.0	GX390 (389cc)	8.750-580.0	2BK90H

SPECIFICATIONS

Model	Pump Pulley #	Pump Bushing	Bushing Part #	Engine Pulley	Pulley Part #	Engine Bushing	Bushing Part #	Belt Size	Belt Part #
BX-282039	9.802-369.0	24MM	9.802-402.0	AK39H	9.803-898.0	H x 3/4"	9.803-897.0	AX33	9.803-896.0
BX-252739	9.802-380.0	24MM	9.802-402.0	BK36H	9.802-379.0	H x 3/4"	9.803-897.0	BX32	9.802-413.0
BX-303039	8.715-592.0	24MM	9.802-402.0	2BK40	9.802-384.0	H x 1"	9.802-399.0	BX38 (2)	9.802-417.0
BX-373539	8.715-593.0	24MM	9.802-402.0	2BK32H	8.715-576.0	H x 1"	9.802-399.0	BX39 (2)	9.802-418.0

HD.1 SERIES PUMP EXPLODED VIEW

8.725-168.0 HD 3025R.1
 8.904-730.0 HD 3030R.1
 8.916-561.0 HD 4020R.1



D4020.1
 D3025.1
 D3030.1

TORQUE SPECS	
Item #	Ft.-lbs
14	65
17	18
25	7.6
34	7
44	13

HD.1 SERIES PUMP EXPLODED VIEW PARTS LIST

ITEM	PART NO.	DESCRIPTION	QTY	ITEM	PART NO.	DESCRIPTION	QTY
1	9.803-938.0	Crankcase	1	11*	9.803-947.0	O-Ring Ø1.78 x 15.54	6
2*	See Kits Below	Plunger Oil Seal	3	12*	See Kits Below	Valve Assembly	6
3*	See Kits Below	O-Ring Ø1.78 x 28.30	3	13*	9.803-948.0	O-Ring Ø2.62 x 18.77	6
4*	See Kits Below	Pressure Ring 15mm (3030)	3	14	9.803-949.0	Valve Plug	6
	See Kits Below	Pressure Ring 18mm (4020, 3025)	3	15	9.803-950.0	Copper Washer 1/4	1
5*	See Kits Below	U-Seal, 15mm (3030)	3	16	9.803-951.0	Brass Plug G1/4	1
	See Kits Below	U-Seal, 18mm (4020, 3025)	3	17	9.803-952.0	Manifold Stud Bolt	8
6*	See Kits Below	Intermediate Ring 15mm (3030)	3	18	9.802-884.0	Washer	8
	See Kits Below	Intermediate 18mm (4020, 3025)	3	19	9.803-198.0	Copper Washer 3/8	1
7*	See Kits Below	Intermed. Ring 15mm (3030)	3	20	9.802-925.0	Brass Plug 3/8	2
	See Kits Below	Intermed. Ring 18mm (4020, 3025)	3	25	9.802-939.0	Screw	12
8	9.802-926.0	Brass Plug 1/2"	1	26	9.803-953.0	Bearing Cover	2
9	9.803-199.0	Copper Washer 1/2"	1	27	9.803-954.0	Bearing Seal	1
10	9.803-946.0	Manifold Housing	1	28	9.802-914.0	Snap Ring	1
				29	9.803-955.0	Ball Bearing	2
				30	9.803-956.0	Crankshaft	1
				31	9.803-167.0	Crankshaft Key	1
				32	9.803-957.0	Oil Dipstick	1

HD.1 SERIES PUMP EXPLODED VIEW PARTS LIST (CONT.)

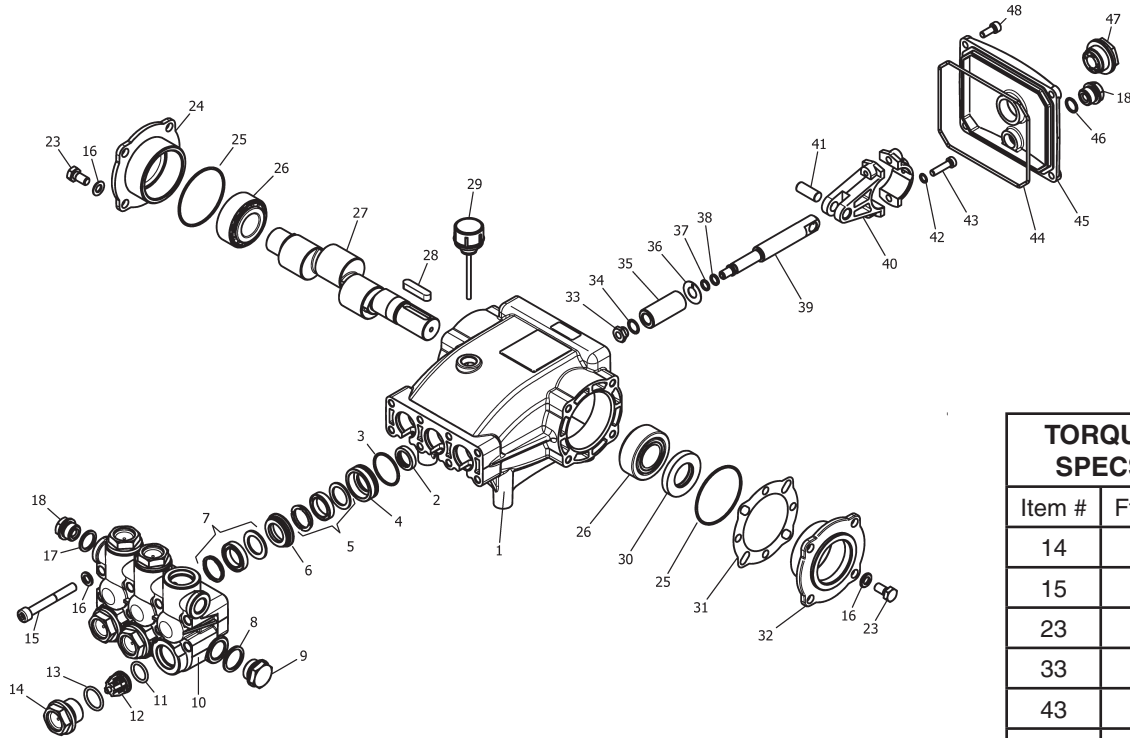
ITEM	PART NO.	DESCRIPTION	QTY
33	8.933-010.0	Crankshaft Seal	1
34*	See Kits Below	Plunger Nut	3
35*	See Kit Below	Copper Spacer	3
36*	See Kits Below	Plunger, 15mm (3030)	3
	See Kits Below	Plunger, 18mm (4020, 3025)	3
37*	See Kits Below	Copper Spacer	3
38*	See Kits Below	O-Ring Ø1.78 x 5.28	3
39*	See Kits Below	Teflon Ring	3
40*	See Kits Below	Plunger Rod	3
41	9.803-965.0	Connecting Rod Pin	3
42	9.803-966.0	Connecting Rod	3
43	9.803-218.0	Spring Washer	6
44	8.933-020.0	Connecting Rod Screw	6
45	9.803-202.0	Sight Glass	1
46	9.803-197.0	Gasket	1
47	9.803-968.0	Crankcase Cover	1
48	9.803-969.0	O-Ring Ø2.62 x 107.62	

* Available in kit (See below)

REPAIR KIT NUMBER	8.725-354.0	8.725-356.0	8.725-355.0	8.725-357.0	9.803-934.0	9.803-935.0	9.803-936.0	9.803-937.0
Kit Description	Plunger Seal 15mm LD-3030	Plunger Seal 18mm LD-3025 LD-4020	Complete Seal Packing, 15mm LD-3030	Complete Seal Packing, 18mm LD-3025 LD-4020	Plunger 15mm LD-3030	Plunger 18mm LD-3025 LD-4020	Complete Valve	Plunger Oil Seals
ITEM NUMBERS INCLUDED	3, 5, 7	3, 5, 7	3, 4, 5, 6, 7	3, 4, 5, 6, 7	34, 35, 36, 37, 38	34, 35, 36, 37, 38	11, 12, 13	2
NUMBER OF CYLINDERS KIT WILL SERVICE	3	3	1	1	1	1	6	3

HM.3 SERIES PUMP EXPLODED VIEW

8.751-180.0 HM4035R.3



TORQUE SPECS	
Item #	Ft.-lbs
14	75
15	30
23	8
33	9
43	13
48	7.6

HM.3 SERIES PUMP EXPLODED VIEW PARTS LIST

ITEM	PART NO.	DESCRIPTION	QTY	ITEM	PART NO.	DESCRIPTION	QTY
1	8.751-216.0	Crankcase	1	23	9.802-944.0	Hexagonal Screw	8
2*	See Kits Below	Plunger Oil seal	3	24	8.717-210.0	Closed Bearing Housing	1
3*	See Kits Below	O-Ring Ø1.78 x 31.47	3	25	9.803-192.0	O-Ring Ø1.78 x 60.05	2
4*	See Kits Below	Pressure Ring	3	26	8.933-011.0	Tapered Roller Bearing	2
5*	See Kits Below	U-Seal	3	27	9.803-146.0	Crankshaft (3540)	1
6*	See Kits Below	Intermediate Ring	3		9.803-147.0	Crankshaft (4035)	1
7*	See Kits Below	U-Seal	3	28	9.803-167.0	Crankshaft Key	1
8	9.803-199.0	Washer, Copper	1	29	9.802-921.0	Oil Dip Stick	1
9	9.802-926.0	Plug, Brass 1/2	1	30	9.803-140.0	Crankshaft Seal	1
10	8.751-218.0	Manifold Head	1	31	9.803-178.0	Shim	2
11*	See Kits Below	O-Ring Ø2.62 x 17.13	6	32	8.717-209.0	Bearing Housing	1
12*	See Kits Below	Valve Assembly	6	33*	See Kits Below	Plunger Nut, M8	3
13*	See Kits Below	O-Ring Ø2.62 x 20.29	6	34*	See Kits Below	Copper Spacer	3
14	9.802-928.0	Valve Plug	6	35*	See Kits Below	Plunger (4035) Plunger (3540)	3 3
15	9.802-938.0	Manifold Stud Bolt	8	36*	See Kits Below	Copper Spacer	3
16	9.802-884.0	Washer	16	37*	See Kits Below	O-Ring Ring	3
17	9.803-198.0	Copper Washer 3/8	1	38*	See Kits Below	Teflon Ring	3
18	9.802-925.0	Brass Plug 3/8	2	39	9.803-144.0	Plunger Rod	3

HM.3 SERIES PUMP EXPLODED VIEW PARTS LIST (CONT.)

ITEM	PART NO.	DESCRIPTION	QTY
40	9.803-158.0	Connecting Rod	3
41	8.751-228.0	Connecting Rod Pin	3
42	9.803-218.0	Spring Washer	6
43	9.803-238.0	Connecting Rod Screw	6
44	70-060009	O-Ring, Ø2.62 x 126.67	1
45	8.751-229.0	Crankcase Cover	1
46	9.803-197.0	O-Ring, Ø1.78 x 14	1
47	9.803-202.0	Sight Glass 3/4	1
48	9.802-939.0	Cover Screw	5

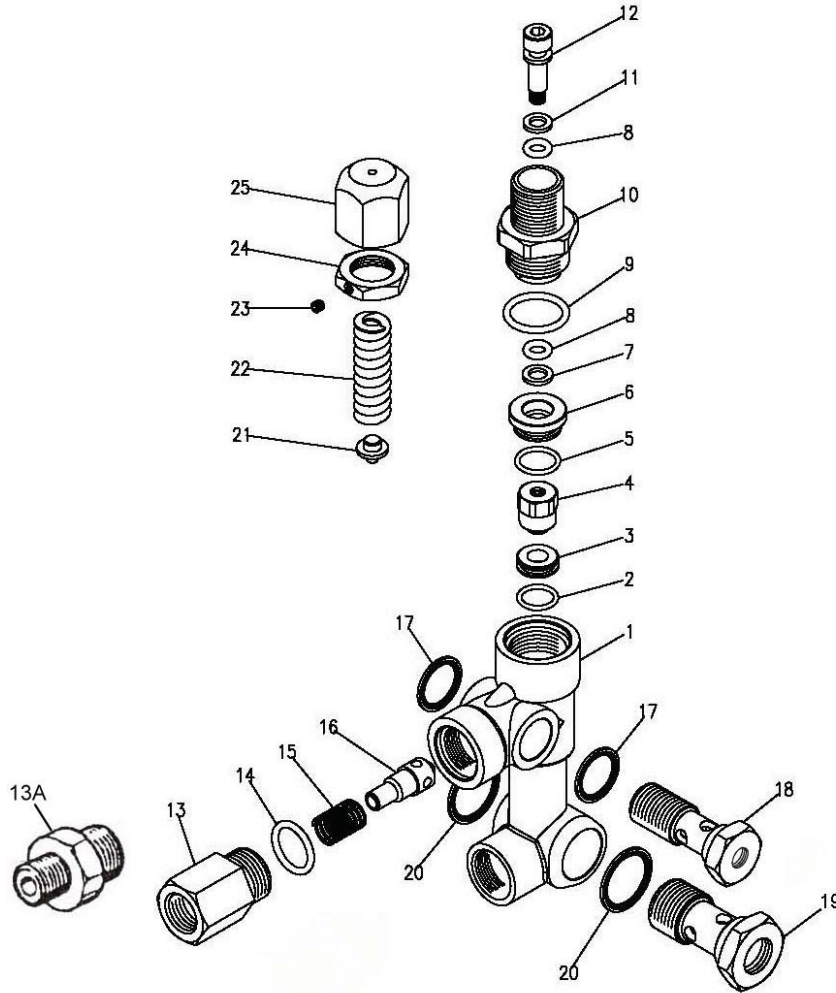
* Available in kit (See below)

REPAIR KIT NO.	8.725-360.0	8.725-358.0	8.725-361.0	8.725-359.0	8.725-237.0	8.933-023.0	9.802-603.0	9.802-609.0
KIT DESCRIPTION	Plunger Seal 4035 18mm	Plunger Seal 3540 15mm	Complete Seal Packing 4035 18mm	Complete Seal Packing 3540 15mm	Plunger 4030 18mm	Plunger 3540 15mm	Complete Valve	Plunger Oil Seals
ITEM NUMBERS INCLUDED	3, 5, 7	3, 5, 7	3, 4, 5, 6, 7	3, 4, 5, 6, 7	33, 34, 35, 36, 37, 38	33, 34, 35, 36, 37, 38	11, 12, 13	2
NO. OF CYLINDERS KIT WILL SERVICE	3	3	1	1		1	6	3

VBA UNLOADER EXPLODED VIEW

9.803-899.0

9.803-900.0



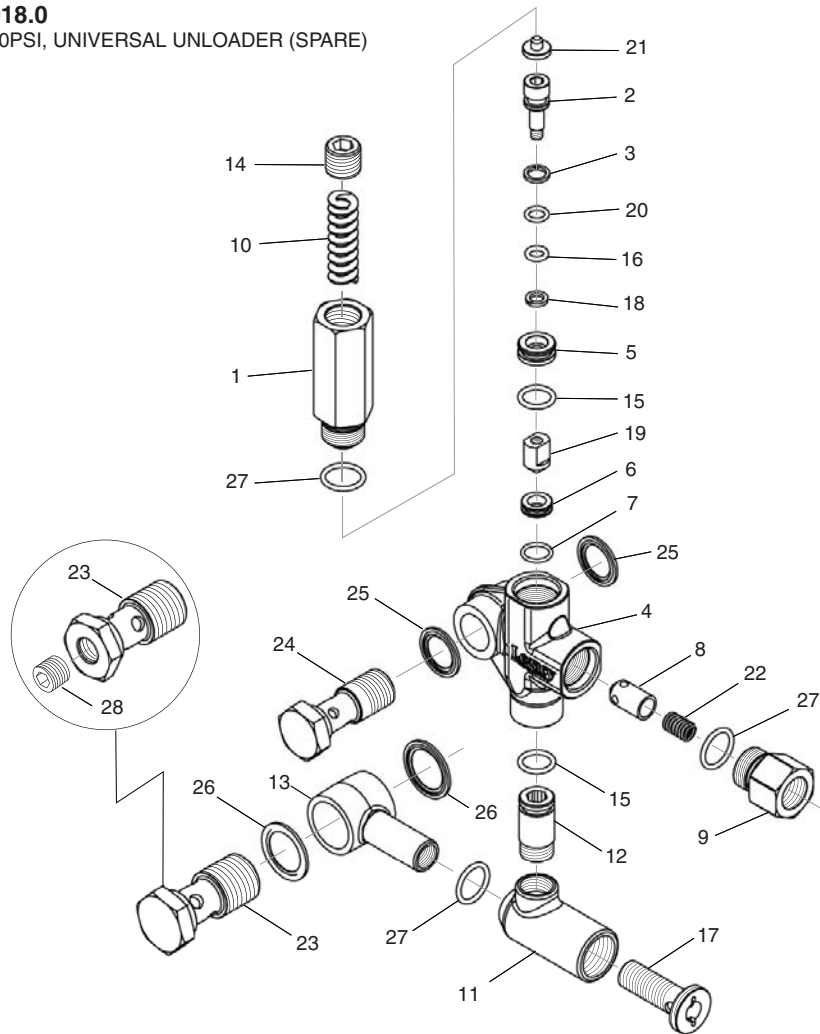
VBA UNLOADER EXPLODED VIEW PARTS LIST

ITEM	PART NO.	DESCRIPTION	KIT	QTY	ITEM	PART NO.	DESCRIPTION	KIT	QTY
1		Body Valve (KG)		1	16		Poppet	B	1
		Body Valve (KS)		1	17	9.802-893.0	Seal Washer 3/8		2
2		O-Ring	A,C	1	18	9.803-915.0	Banjo Bolt 3/8" w 1/8" Pilot		1
3		Seat	C	1		9.803-919.0	Banjo Bolt 3/8" Solid Cap		1
4		Ball, Sub-assy	C	1	19	9.803-920.0	Banjo Bolt 1/2" w 1/4" Pilot		1
5		O-Ring	A	1		8.750-105.0	Banjo Bolt 1/2" Solid Cap		
6	9.803-907.0	Guide Bushing		1		9.803-919.0	Banjo Bolt 3/8" Solid Cap		
7		Teflon Ring		1	20	9.803-921.0	Seal Washer 1/2		2
8		O-Ring	A	1	21		Plate	C	1
9		O-Ring	A	2	22		Spring	C	1
10	9.803-911.0	Connector		1	23	8.933-021.0	Set Screw		1
11		Teflon Ring	A	1	24	9.803-925.0	Nut		1
12	70-120207	Stem	C	1	25	9.803-926.0	Brass Handle		1
13	9.803-941.0	Connector Female		1	Kit A	8.717-672.0	O-Ring Repair Kit		
13A	9.702-892.0	Connector Male		1	Kit B	8.717-673.0	Outlet Kit		
14		O-Ring	A,B	1	Kit C	8.717-674.0	Stem Repair Kit		
15		Spring	B	1					

UU1 UNLOADER EXPLODED VIEW

9.175-018.0

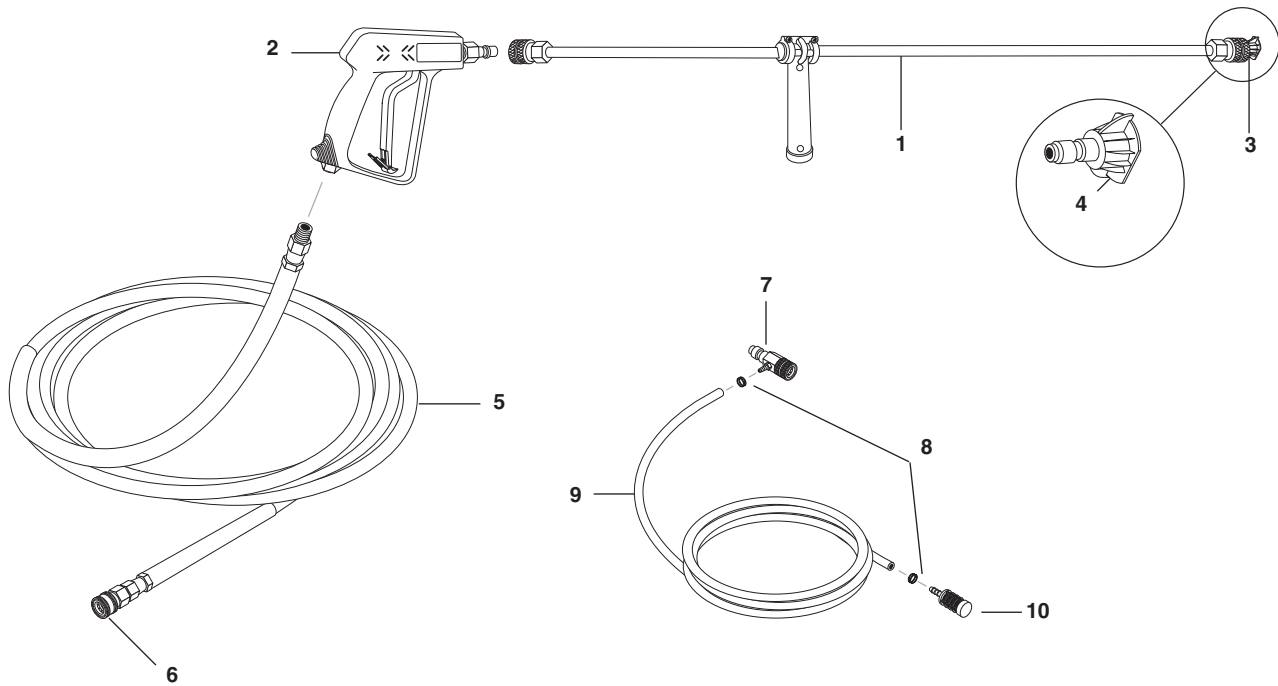
UU1 3500PSI, UNIVERSAL UNLOADER (SPARE)



UU1 UNLOADER EXPLODED VIEW PARTS LIST

ITEM	PART #	DESCRIPTION	KIT	QTY	ITEM	PART #	DESCRIPTION	KIT	QTY
1	8.749-792.0	Piston housing		1	17	9.149-006.0	Sliding connector guide		1
2		Piston	C	1	18		O-ring backup 6X 1.45X 1.68	A	1
3		Piston O-ring back up	A	1	19		Conical seal	C	1
4	8.749-796.0	Main block		1	20		O-ring 6.75 X 1.78 BN80	A	1
5	9.152-372.0	Piston ring		1	21		Spring seat	C	1
6		Ball seat	C	1	22		Plunger spring	B	1
7		O-ring 10.5 ID X 1.5 CS	A,C	1	23	8.917-699.0	Banjo bolt 1/2" short		1
8		Plunger	B	1		8.917-700.0	Banjo bolt 1/2"-1/4"NPT short		1
9	9.152-016.0	Plunger housing		1		8.917-698.0	Banjo bolt 3/8" short		1
10		Bypass spring	C	1	24	8.917-698.0	Banjo bolt 3/8" short		1
11	9.149-001.0	Low pressure port		1	25	9.802-893.0	Seal washer 3/8"		2
12	9.152-017.0	Sliding connector, 30mm		1	26	9.803-921.0	Seal washer 1/2"		2
	8.762-005.0	Sliding connector, 40mm, long		1		9.802-893.0	Seal washer 3/8"		2
13	9.149-002.0	Sliding connector H 1/2"		1	27		O-RING 15 ID x 2 CS	A,B	3
	9.149-005.0	Sliding connector H 3/8"		1	28	8.706-865.0	Plug, 1/4" countersunk		1
14	9.196-011.0	Plug 5/8 -18 UNF		1	Kit A	9.104-038.0	O-ring Repair Kit		
15		O-ring 12 ID x 2 CS	A	2	Kit B	9.104-039.0	Outlet Kit		
16		O-ring 6 ID X 2 CS	A	1	Kit C	9.104-040.0	Stem Repair Kit		

HOSE, GUN & WAND ASSEMBLY



HOSE, GUN & WAND ASSEMBLY PARTS LIST

ITEM	PART NO.	DESCRIPTION	QTY
1	8.904-423.0	Wand Assy., 35-1/2" Side Grip, w/Couplers	1
2	8.904-490.0	Spray Gun Assy.	1
3	9.802-164.0	Coupler, 1/4" Female, Brass	2
4		Nozzle, Please See Exploded Views For Sizes	
5	8.739-183.0	Hose, 3/8" x 50', 2 Wire, Tuff-Flex (373539)	1
	8.739-011.0	Hose, 3/8" x 50', 1 Wire, Tuff-Skin (252739, 282039, 303039)	1
6	9.802-166.0	Coupler, 3/8" Female, Brass	1
7	9.802-216.0	Injector, Detergent, Non-Adjust, 3-5 GPM, .083	1
8	6.390-126.0	Clamp, Hose	2
9	9.802-251.0	Tube, 1/4" x 1/2" Clear Vinyl	6 ft.
10	8.707-057.0	Strainer	1