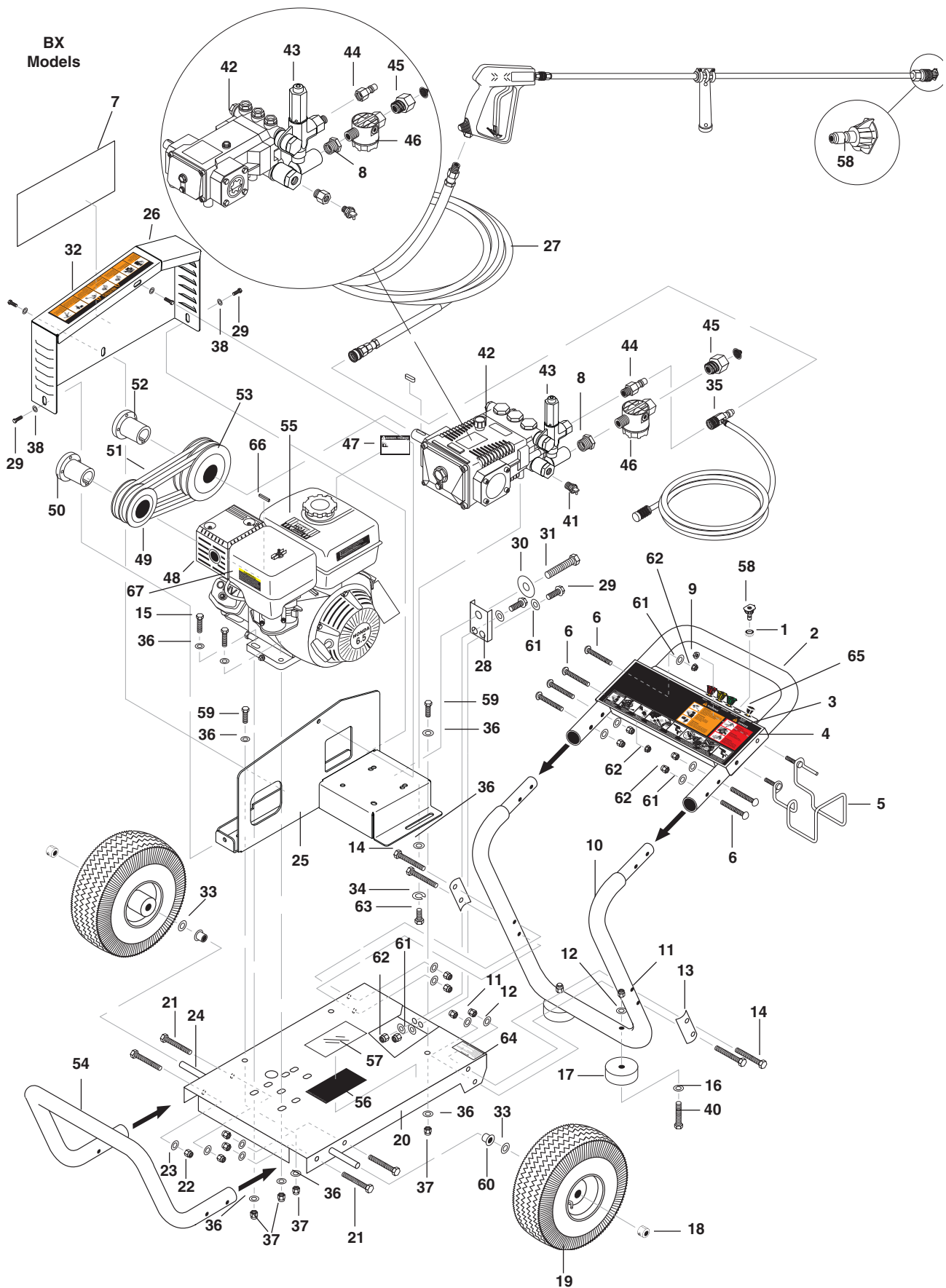


# EXPLODED VIEW - 2527, 2820

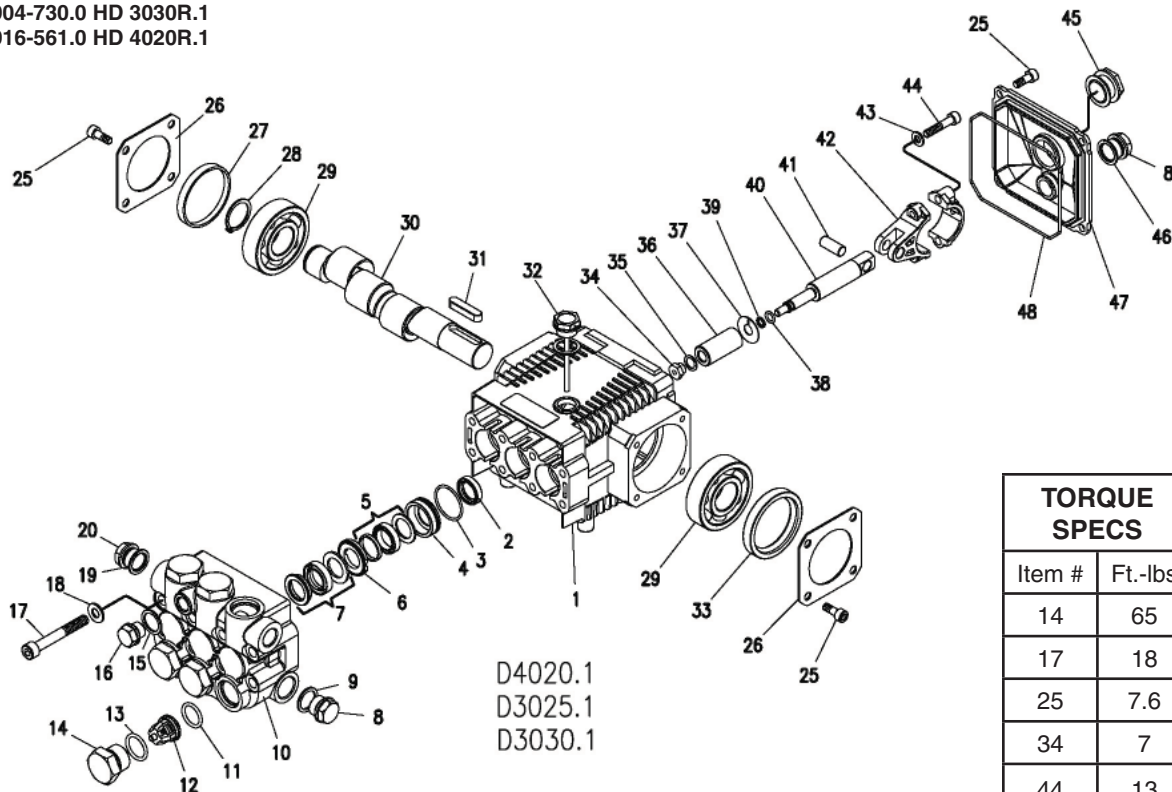


## EXPLODED VIEW PARTS LIST - 2527, 2820

| ITEM | PART NO.    | DESCRIPTION                                       | QTY | ITEM | PART NO.    | DESCRIPTION                              | QTY |
|------|-------------|---|-----|------|-------------|--|-----|
| 1    | 9.802-064.0 | Grommet, Rubber, Nozzle Holder                    | 5   | 39   |             |  |     |
| 2    | 8.719-938.0 | Handle, Grab, Red                                 | 1   | 40   | 9.802-730.0 | Bolt 3/8" x 2-1/4"                       | 2   |
| 3    | 8.900-910.0 | Label, BX Models                                  | 1   | 41   | 9.804-025.0 | Pump Protector 1/4"                      | 1   |
| 4    | 8.912-081.0 | Plate, Warning/Instr., Red                        | 1   | 42   |             | Pump, See Specifications Pages           |     |
| 5    | 9.803-098.0 | Hanger, Hose/Wand                                 | 1   | 43   |             | Unloader, See Specifications Pages       |     |
| 6    | 9.802-706.0 | Bolt, Carriage, 1/4"-20 x 1-3/4", Zinc            | 6   | 44   | 9.802-171.0 | Nipple, 3/8" x 3/8" NPT ST Male          | 1   |
| 7    | 8.901-144.0 | Label, Belt Guard (BX)                            | 1   | 45   | 9.802-146.0 | Swivel, 1/2" MP x 3/4" GHF w/Strainer    | 1   |
| 8    | 8.706-984.0 | Adapter, 1/2" x 1/2" (2527, 2820)                 | 1   | 46   | 9.802-163.0 | Strainer, 1/2" PA, Inline Plastic        | 1   |
|      | 8.706-992.0 | Adapter, 1/2" x 3/8" (282039)                     | 1   | 47   | 9.800-008.0 | Label, Danger Cool Engine                | 1   |
| 9    | 9.802-778.0 |   | 2   | 48   |             | Engine, See Specifications               |     |
| 10   | 8.719-937.0 | Handle, Lower Grab, Red                           | 1   | 49   |             | Engine Pulley, See Specifications Pages  |     |
| 11   | 9.802-779.0 | Nut, 3/8", ESNA, NC                               | 6   | 50   |             | Engine Bushing, See Specifications Pages |     |
| 12   | 9.802-807.0 | Washer, 3/8", SAE, Flat                           | 6   | 51   |             | Belts, See Specifications Pages          |     |
| 13   | 8.912-061.0 | Retainer Bracket, Handle, Red                     | 2   | 52   |             | Pump Bushing, See Specifications Pages   |     |
| 14   | 9.802-728.0 | Bolt, 3/8" x 2" NC, HH                            | 4   | 53   |             | Pump Pulley, See Specifications Pages    |     |
| 15   | 9.802-713.0 | Bolt, 5/16" x 1/2"                                | 4   | 54   | 8.719-939.0 | Handle, Bumper, Red                      | 1   |
| 16   | 9.802-817.0 | Washer, 3/8" x 1", Steel                          | 2   | 55   | 9.800-006.0 | Label, Hot/Caliente w/Arrows, Warning    | 1   |
| 17   | 9.802-066.0 | Pad, Soft Rubber                                  | 2   | 56   | 8.932-968.0 | Label, For Outdoor Use                   | 1   |
| 18   | 9.802-782.0 | Collar, 5/8" Bore Shaft, 3010                     | 2   | 57   | 9.800-034.0 | Label, Clear Lexan, 2-1/4" x 4-1/2"      | 1   |
| 19   | 9.802-270.0 | Wheel & Tire Assy., 4" Steel Rim w/Tube           | 2   | 58   | 8.712-331.0 | Nozzle, SAQCMEG, 0003.0, Red (2527)      | 1   |
| 20   | 8.912-093.0 | Frame Assy, Small                                 | 1   |      | 8.712-333.0 | Nozzle, SAQCMEG 1503.0, Yellow (2527)    | 1   |
| 21   | 9.802-712.0 | Bolt, 5/16" x 1-3/4", NC, Carriage, Zinc          | 4   |      | 8.712-334.0 | Nozzle, SAQCMEG, 2503.0, Green (2527)    | 1   |
| 22   | 9.802-776.0 | Nut, 5/16", ESNA, NC                              | 4   |      | 8.712-335.0 | Nozzle, SAQCMEG 4003.0, White (2527)     | 1   |
| 23   | 8.718-980.0 | Washer, 5/16" Flat, SAE                           | 4   |      | 8.712-345.0 | Nozzle, SACQMEG, 0004.5, Red (2820)      | 1   |
| 24   | 9.803-097.0 | Axle, 5/8" x 19-5/8"                              | 1   |      | 8.712-346.0 | Nozzle, SAQCMEG 1504.0, Yellow (2820)    | 1   |
| 25   | 8.917-887.0 | Slider, Pump                                      | 1   |      | 8.712-347.0 | Nozzle, SAQCMEG, 2504.0, Green (2820)    | 1   |
| 26   | 8.917-885.0 | Guard, Belt                                       | 1   |      | 8.712-348.0 | Nozzle, SAQCMEG 4004.0, White (2820)     | 1   |
| 27   |             | Hose, See Specifications Pages                    |     | 59   | 9.802-710.0 | Bolt, 5/16" x 1" NC                      | 3   |
| 28   | 8.912-082.0 | Bracket, Take Up, CW, Red                         | 1   | 60   | 9.802-103.0 | Bushing, 5/8" Snap                       | 2   |
| 29   | 9.802-700.0 | Screw, 1/4" x 3/4" HH NC                          | 6   | 61   | 9.802-802.0 | Washer, 1/4" Flat, SAE                   | 10  |
| 30   | 9.802-809.0 | Washer, 1/2", Flat, SAE                           | 1   | 62   | 9.802-773.0 | Nut, 1/4" ESNA, NC                       | 8   |
| 31   | 9.802-740.0 | Bolt, 1/2" x 3-1/2" HEX                           | 1   | 63   | 9.802-741.0 | Bolt, 8mm x 30mm Hex                     | 4   |
| 32   | 9.800-036.0 | Label, Warning Pictorial Sm                       | 1   | 64   | 9.800-049.0 | Label, Cleaning Solution                 | 1   |
| 33   | 9.802-810.0 | Washer, 5/8" Flat                                 | 2   | 65   | 8.712-398.0 | Nozzle, Compl, Detergent                 | 1   |
| 34   | 9.802-813.0 | Washer, 5/16" Lock                                | 4   | 66   | 9.802-958.0 | Key, .185" Sqr. x 1.75"                  | 1   |
| 35   | 9.802-225.0 | Injector, Detergent Assy, Non-Adj, 3-5 GPM, 0.083 | 1   | 67   | 8.917-015.0 | Label, Regulation 4442.6                 | 1   |
| 36   | 8.718-980.0 | Washer, 5/16" Flat                                | 18  |      |             |  |     |
| 37   | 9.802-776.0 | Nut, 5/16" ESNA                                   | 7   |      |             |  |     |
| 38   | 9.802-802.0 | Washer, 1/4"                                      | 4   |      |             |  |     |

## HD.1 SERIES PUMP EXPLODED VIEW

8.725-168.0 HD 3025R.1  
 8.904-730.0 HD 3030R.1  
 8.916-561.0 HD 4020R.1



D4020.1  
 D3025.1  
 D3030.1

| TORQUE SPECS |         |
|--------------|---------|
| Item #       | Ft.-lbs |
| 14           | 65      |
| 17           | 18      |
| 25           | 7.6     |
| 34           | 7       |
| 44           | 13      |

## HD.1 SERIES PUMP EXPLODED VIEW PARTS LIST

| ITEM | PART NO.       | DESCRIPTION                      | QTY | ITEM | PART NO.       | DESCRIPTION          | QTY |
|------|----------------|----------------------------------|-----|------|----------------|----------------------|-----|
| 1    | 9.803-938.0    | Crankcase                        | 1   | 11*  | 9.803-947.0    | O-Ring Ø1.78 x 15.54 | 6   |
| 2*   | See Kits Below | Plunger Oil Seal                 | 3   | 12*  | See Kits Below | Valve Assembly       | 6   |
| 3*   | See Kits Below | O-Ring Ø1.78 x 28.30             | 3   | 13*  | 9.803-948.0    | O-Ring Ø2.62 x 18.77 | 6   |
| 4*   | See Kits Below | Pressure Ring 15mm (3030)        | 3   | 14   | 9.803-949.0    | Valve Plug           | 6   |
|      | See Kits Below | Pressure Ring 18mm (4020, 3025)  | 3   | 15   | 9.803-950.0    | Copper Washer 1/4    | 1   |
| 5*   | See Kits Below | U-Seal, 15mm (3030)              | 3   | 16   | 9.803-951.0    | Brass Plug G1/4      | 1   |
|      | See Kits Below | U-Seal, 18mm (4020, 3025)        | 3   | 17   | 9.803-952.0    | Manifold Stud Bolt   | 8   |
| 6*   | See Kits Below | Intermediate Ring 15mm (3030)    | 3   | 18   | 9.802-884.0    | Washer               | 8   |
|      | See Kits Below | Intermediate 18mm (4020, 3025)   | 3   | 19   | 9.803-198.0    | Copper Washer 3/8    | 1   |
| 7*   | See Kits Below | Intermed. Ring 15mm (3030)       | 3   | 20   | 9.802-925.0    | Brass Plug 3/8       | 2   |
|      | See Kits Below | Intermed. Ring 18mm (4020, 3025) | 3   | 25   | 9.802-939.0    | Screw                | 12  |
| 8    | 9.802-926.0    | Brass Plug 1/2"                  | 1   | 26   | 9.803-953.0    | Bearing Cover        | 2   |
| 9    | 9.803-199.0    | Copper Washer 1/2"               | 1   | 27   | 9.803-954.0    | Bearing Seal         | 1   |
| 10   | 9.803-946.0    | Manifold Housing                 | 1   | 28   | 9.802-914.0    | Snap Ring            | 1   |
|      |                |                                  |     | 29   | 9.803-955.0    | Ball Bearing         | 2   |
|      |                |                                  |     | 30   | 9.803-956.0    | Crankshaft           | 1   |
|      |                |                                  |     | 31   | 9.803-167.0    | Crankshaft Key       | 1   |
|      |                |                                  |     | 32   | 9.803-957.0    | Oil Dipstick         | 1   |

## HD.1 SERIES PUMP EXPLODED VIEW PARTS LIST (CONT.)

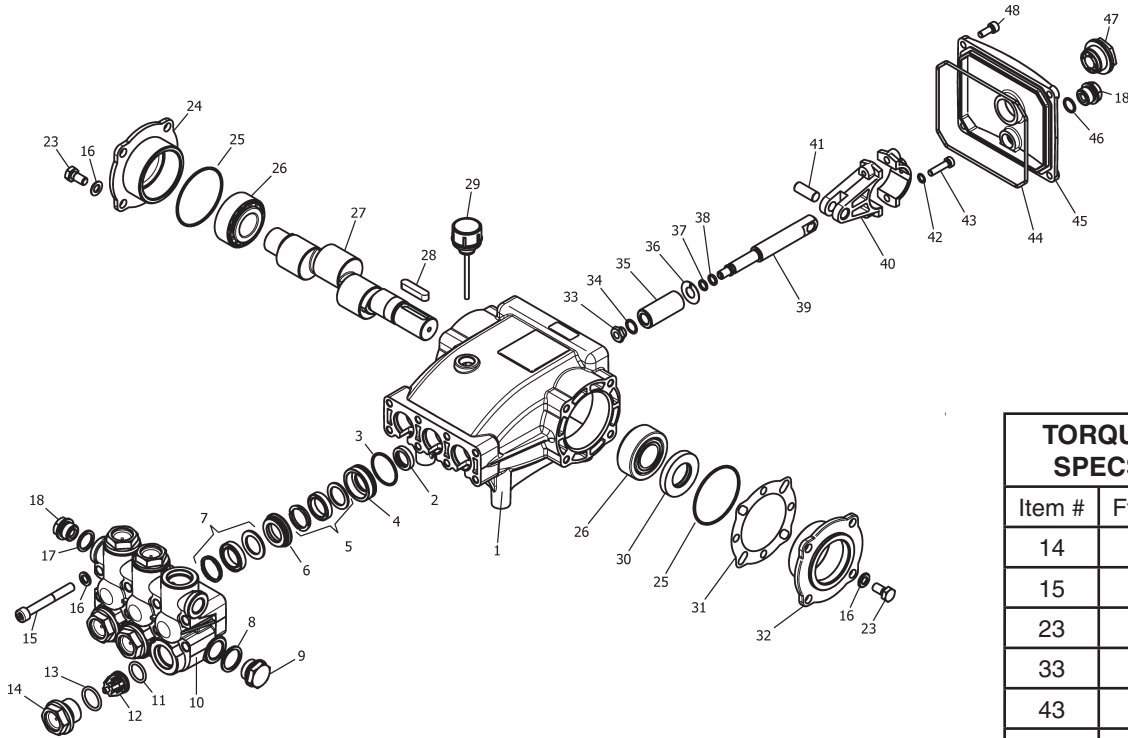
| ITEM | PART NO.       | DESCRIPTION                | QTY |
|------|----------------|----------------------------|-----|
| 33   | 8.933-010.0    | Crankshaft Seal            | 1   |
| 34*  | See Kits Below | Plunger Nut                | 3   |
| 35*  | See Kit Below  | Copper Spacer              | 3   |
| 36*  | See Kits Below | Plunger, 15mm (3030)       | 3   |
|      | See Kits Below | Plunger, 18mm (4020, 3025) | 3   |
| 37*  | See Kits Below | Copper Spacer              | 3   |
| 38*  | See Kits Below | O-Ring Ø1.78 x 5.28        | 3   |
| 39*  | See Kits Below | Teflon Ring                | 3   |
| 40*  | See Kits Below | Plunger Rod                | 3   |
| 41   | 9.803-965.0    | Connecting Rod Pin         | 3   |
| 42   | 9.803-966.0    | Connecting Rod             | 3   |
| 43   | 9.803-218.0    | Spring Washer              | 6   |
| 44   | 8.933-020.0    | Connecting Rod Screw       | 6   |
| 45   | 9.803-202.0    | Sight Glass                | 1   |
| 46   | 9.803-197.0    | Gasket                     | 1   |
| 47   | 9.803-968.0    | Crankcase Cover            | 1   |
| 48   | 9.803-969.0    | O-Ring Ø2.62 x 107.62      |     |

\* Available in kit (See below)

| REPAIR KIT NUMBER                    | 8.725-354.0               | 8.725-356.0                       | 8.725-355.0                         | 8.725-357.0                                 | 9.803-934.0          | 9.803-935.0                  | 9.803-936.0    | 9.803-937.0       |
|--------------------------------------|---------------------------|-----------------------------------|-------------------------------------|---|----------------------|------------------------------|----------------|-------------------|
| Kit Description                      | Plunger Seal 15mm LD-3030 | Plunger Seal 18mm LD-3025 LD-4020 | Complete Seal Packing, 15mm LD-3030 | Complete Seal Packing, 18mm LD-3025 LD-4020 | Plunger 15mm LD-3030 | Plunger 18mm LD-3025 LD-4020 | Complete Valve | Plunger Oil Seals |
| ITEM NUMBERS INCLUDED                | 3, 5, 7                   | 3, 5, 7                           | 3, 4, 5, 6, 7                       | 3, 4, 5, 6, 7                               | 34, 35, 36, 37, 38   | 34, 35, 36, 37, 38           | 11, 12, 13     | 2                 |
| NUMBER OF CYLINDERS KIT WILL SERVICE | 3                         | 3                                 | 1                                   | 1   | 1                    | 1                            | 6              | 3                 |

# HM.3 SERIES PUMP EXPLODED VIEW

8.751-180.0 HM4035R.3



| TORQUE SPECS |         |
|--------------|---------|
| Item #       | Ft.-lbs |
| 14           | 75      |
| 15           | 30      |
| 23           | 8       |
| 33           | 9       |
| 43           | 13      |
| 48           | 7.6     |

## HM.3 SERIES PUMP EXPLODED VIEW PARTS LIST

| ITEM | PART NO.       | DESCRIPTION          | QTY | ITEM | PART NO.       | DESCRIPTION                      | QTY    |
|------|----------------|----------------------|-----|------|----------------|----------------------------------|--------|
| 1    | 8.751-216.0    | Crankcase            | 1   | 23   | 9.802-944.0    | Hexagonal Screw                  | 8      |
| 2*   | See Kits Below | Plunger Oil seal     | 3   | 24   | 8.717-210.0    | Closed Bearing Housing           | 1      |
| 3*   | See Kits Below | O-Ring Ø1.78 x 31.47 | 3   | 25   | 9.803-192.0    | O-Ring Ø1.78 x 60.05             | 2      |
| 4*   | See Kits Below | Pressure Ring        | 3   | 26   | 8.933-011.0    | Tapered Roller Bearing           | 2      |
| 5*   | See Kits Below | U-Seal               | 3   | 27   | 9.803-146.0    | Crankshaft (3540)                | 1      |
| 6*   | See Kits Below | Intermediate Ring    | 3   |      | 9.803-147.0    | Crankshaft (4035)                | 1      |
| 7*   | See Kits Below | U-Seal               | 3   | 28   | 9.803-167.0    | Crankshaft Key                   | 1      |
| 8    | 9.803-199.0    | Washer, Copper       | 1   | 29   | 9.802-921.0    | Oil Dip Stick                    | 1      |
| 9    | 9.802-926.0    | Plug, Brass 1/2      | 1   | 30   | 9.803-140.0    | Crankshaft Seal                  | 1      |
| 10   | 8.751-218.0    | Manifold Head        | 1   | 31   | 9.803-178.0    | Shim                             | 2      |
| 11*  | See Kits Below | O-Ring Ø2.62 x 17.13 | 6   | 32   | 8.717-209.0    | Bearing Housing                  | 1      |
| 12*  | See Kits Below | Valve Assembly       | 6   | 33*  | See Kits Below | Plunger Nut, M8                  | 3      |
| 13*  | See Kits Below | O-Ring Ø2.62 x 20.29 | 6   | 34*  | See Kits Below | Copper Spacer                    | 3      |
| 14   | 9.802-928.0    | Valve Plug           | 6   | 35*  | See Kits Below | Plunger (4035)<br>Plunger (3540) | 3<br>3 |
| 15   | 9.802-938.0    | Manifold Stud Bolt   | 8   | 36*  | See Kits Below | Copper Spacer                    | 3      |
| 16   | 9.802-884.0    | Washer               | 16  | 37*  | See Kits Below | O-Ring Ring                      | 3      |
| 17   | 9.803-198.0    | Copper Washer 3/8    | 1   | 38*  | See Kits Below | Teflon Ring                      | 3      |
| 18   | 9.802-925.0    | Brass Plug 3/8       | 2   | 39   | 9.803-144.0    | Plunger Rod                      | 3      |

## HM.3 SERIES PUMP EXPLODED VIEW PARTS LIST (CONT.)

| ITEM | PART NO.    | DESCRIPTION            | QTY |
|------|-------------|------------------------|-----|
| 40   | 9.803-158.0 | Connecting Rod         | 3   |
| 41   | 8.751-228.0 | Connecting Rod Pin     | 3   |
| 42   | 9.803-218.0 | Spring Washer          | 6   |
| 43   | 9.803-238.0 | Connecting Rod Screw   | 6   |
| 44   | 70-060009   | O-Ring, Ø2.62 x 126.67 | 1   |
| 45   | 8.751-229.0 | Crankcase Cover        | 1   |
| 46   | 9.803-197.0 | O-Ring, Ø1.78 x 14     | 1   |
| 47   | 9.803-202.0 | Sight Glass 3/4        | 1   |
| 48   | 9.802-939.0 | Cover Screw            | 5   |

\* Available in kit (See below)

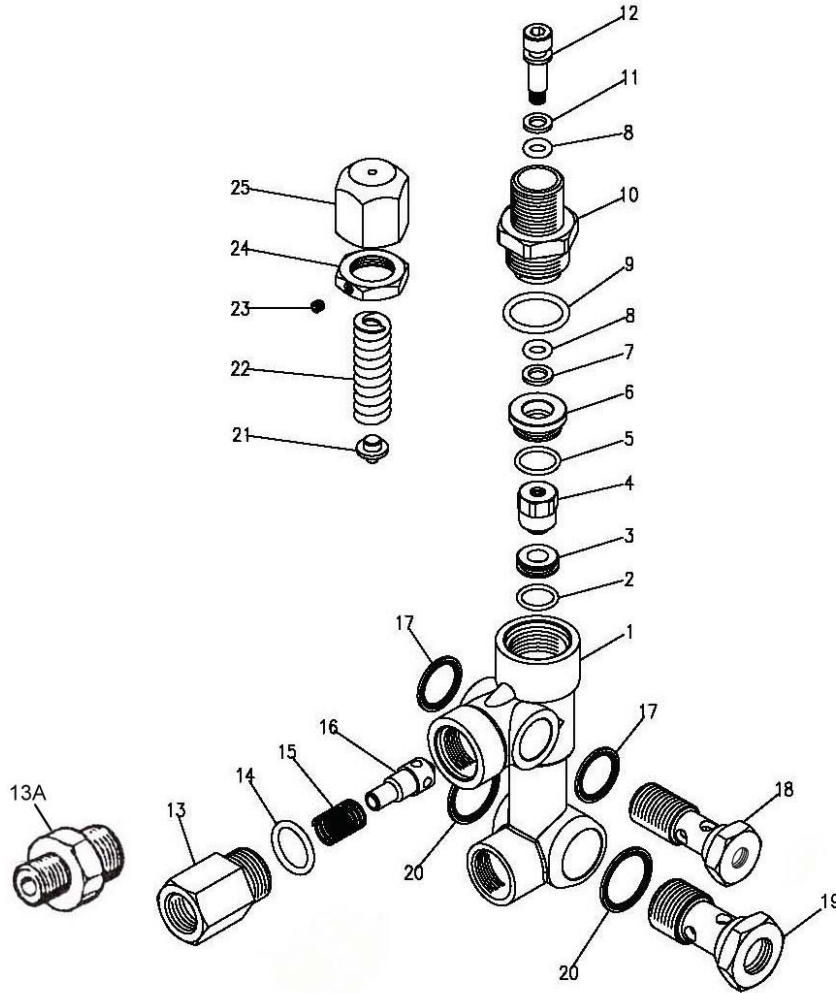
| REPAIR KIT NO.                    | 8.725-360.0                  | 8.725-358.0                  | 8.725-361.0                              | 8.725-359.0                              | 8.725-237.0               | 8.933-023.0               | 9.802-603.0    | 9.802-609.0          |
|-----------------------------------|------------------------------|------------------------------|--|--|---------------------------|---------------------------|----------------|----------------------|
| KIT DESCRIPTION                   | Plunger Seal<br>4035<br>18mm | Plunger Seal<br>3540<br>15mm | Complete Seal<br>Packing<br>4035<br>18mm | Complete Seal<br>Packing<br>3540<br>15mm | Plunger<br>4030<br>18mm   | Plunger<br>3540<br>15mm   | Complete Valve | Plunger Oil<br>Seals |
| ITEM NUMBERS INCLUDED             | 3, 5, 7                      | 3, 5, 7                      | 3, 4, 5, 6, 7                            | 3, 4, 5, 6, 7                            | 33, 34, 35, 36,<br>37, 38 | 33, 34, 35, 36,<br>37, 38 | 11, 12, 13     | 2                    |
| NO. OF CYLINDERS KIT WILL SERVICE | 3                            | 3                            | 1  | 1  |                           | 1                         | 6              | 3                    |



## VBA UNLOADER EXPLODED VIEW

9.803-899.0

9.803-900.0



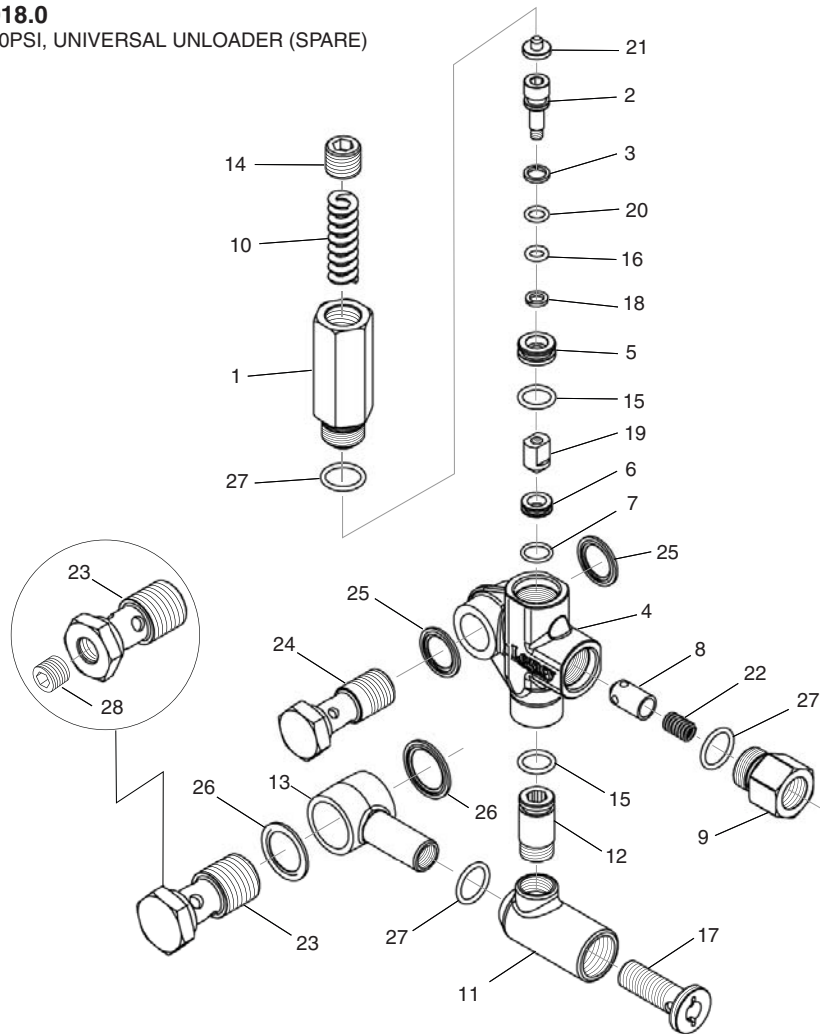
## VBA UNLOADER EXPLODED VIEW PARTS LIST

| ITEM | PART NO.    | DESCRIPTION      | KIT | QTY | ITEM  | PART NO.    | DESCRIPTION                  | KIT | QTY |
|------|-------------|------------------|-----|-----|-------|-------------|------------------------------|-----|-----|
| 1    |             | Body Valve (KG)  |     | 1   | 16    |             | Poppet                       | B   | 1   |
|      |             | Body Valve (KS)  |     | 1   | 17    | 9.802-893.0 | Seal Washer 3/8              |     | 2   |
| 2    |             | O-Ring           | A,C | 1   | 18    | 9.803-915.0 | Banjo Bolt 3/8" w 1/8" Pilot |     | 1   |
| 3    |             | Seat             | C   | 1   |       | 9.803-919.0 | Banjo Bolt 3/8" Solid Cap    |     | 1   |
| 4    |             | Ball, Sub-assy   | C   | 1   | 19    | 9.803-920.0 | Banjo Bolt 1/2" w 1/4" Pilot |     | 1   |
| 5    |             | O-Ring           | A   | 1   |       | 8.750-105.0 | Banjo Bolt 1/2" Solid Cap    |     |     |
| 6    | 9.803-907.0 | Guide Bushing    |     | 1   |       | 9.803-919.0 | Banjo Bolt 3/8" Solid Cap    |     |     |
| 7    |             | Teflon Ring      |     | 1   | 20    | 9.803-921.0 | Seal Washer 1/2              |     | 2   |
| 8    |             | O-Ring           | A   | 1   | 21    |             | Plate                        | C   | 1   |
| 9    |             | O-Ring           | A   | 2   | 22    |             | Spring                       | C   | 1   |
| 10   | 9.803-911.0 | Connector        |     | 1   | 23    | 8.933-021.0 | Set Screw                    |     | 1   |
| 11   |             | Teflon Ring      | A   | 1   | 24    | 9.803-925.0 | Nut                          |     | 1   |
| 12   | 70-120207   | Stem             | C   | 1   | 25    | 9.803-926.0 | Brass Handle                 |     | 1   |
| 13   | 9.803-941.0 | Connector Female |     | 1   | Kit A | 8.717-672.0 | O-Ring Repair Kit            |     |     |
| 13A  | 9.702-892.0 | Connector Male   |     | 1   | Kit B | 8.717-673.0 | Outlet Kit                   |     |     |
| 14   |             | O-Ring           | A,B | 1   | Kit C | 8.717-674.0 | Stem Repair Kit              |     |     |
| 15   |             | Spring           | B   | 1   |       |             |                              |     |     |

## UU1 UNLOADER EXPLODED VIEW

**9.175-018.0**

UU1 3500PSI, UNIVERSAL UNLOADER (SPARE)

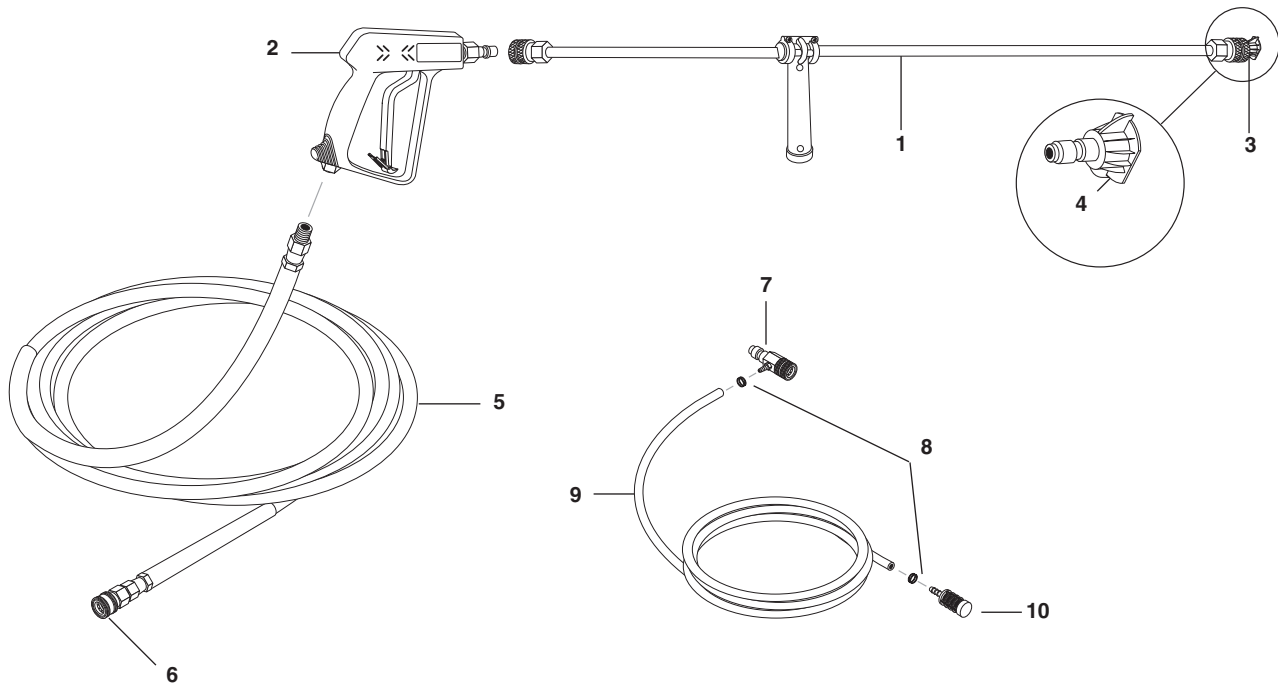


### UU1 UNLOADER EXPLODED VIEW PARTS LIST

| ITEM | PART #      | DESCRIPTION                   | KIT | QTY | ITEM         | PART #      | DESCRIPTION                    | KIT | QTY |
|------|-------------|-------------------------------|-----|-----|--------------|-------------|--------------------------------|-----|-----|
| 1    | 8.749-792.0 | Piston housing                |     | 1   | 17           | 9.149-006.0 | Sliding connector guide        |     | 1   |
| 2    |             | Piston                        | C   | 1   | 18           |             | O-ring backup<br>6X 1.45X 1.68 | A   | 1   |
| 3    |             | Piston O-ring back up         | A   | 1   | 19           |             | Conical seal                   | C   | 1   |
| 4    | 8.749-796.0 | Main block                    |     | 1   | 20           |             | O-ring 6.75 X 1.78 BN80        | A   | 1   |
| 5    | 9.152-372.0 | Piston ring                   |     | 1   | 21           |             | Spring seat                    | C   | 1   |
| 6    |             | Ball seat                     | C   | 1   | 22           |             | Plunger spring                 | B   | 1   |
| 7    |             | O-ring 10.5 ID X 1.5 CS       | A,C | 1   | 23           | 8.917-699.0 | Banjo bolt 1/2" short          |     | 1   |
| 8    |             | Plunger                       | B   | 1   |              | 8.917-700.0 | Banjo bolt 1/2"-1/4"NPT short  |     | 1   |
| 9    | 9.152-016.0 | Plunger housing               |     | 1   |              | 8.917-698.0 | Banjo bolt 3/8" short          |     | 1   |
| 10   |             | Bypass spring                 | C   | 1   | 24           | 8.917-698.0 | Banjo bolt 3/8" short          |     | 1   |
| 11   | 9.149-001.0 | Low pressure port             |     | 1   | 25           | 9.802-893.0 | Seal washer 3/8"               |     | 2   |
| 12   | 9.152-017.0 | Sliding connector, 30mm       |     | 1   | 26           | 9.803-921.0 | Seal washer 1/2"               |     | 2   |
|      | 8.762-005.0 | Sliding connector, 40mm, long |     | 1   |              | 9.802-893.0 | Seal washer 3/8"               |     | 2   |
| 13   | 9.149-002.0 | Sliding connector H 1/2"      |     | 1   | 27           |             | O-RING 15 ID x 2 CS            | A,B | 3   |
|      | 9.149-005.0 | Sliding connector H 3/8"      |     | 1   | 28           | 8.706-865.0 | Plug, 1/4" countersunk         |     | 1   |
| 14   | 9.196-011.0 | Plug 5/8 -18 UNF              |     | 1   | <b>Kit A</b> | 9.104-038.0 | O-ring Repair Kit              |     |     |
| 15   |             | O-ring 12 ID x 2 CS           | A   | 2   | <b>Kit B</b> | 9.104-039.0 | Outlet Kit                     |     |     |
| 16   |             | O-ring 6 ID X 2 CS            | A   | 1   | <b>Kit C</b> | 9.104-040.0 | Stem Repair Kit                |     |     |



# HOSE, GUN & WAND ASSEMBLY



## HOSE, GUN & WAND ASSEMBLY PARTS LIST

| ITEM | PART NO.    | DESCRIPTION   | QTY   |
|------|-------------|---|-------|
| 1    | 8.904-423.0 | Wand Assy., 35-1/2" Side Grip, w/Couplers                     | 1     |
| 2    | 8.904-490.0 | Spray Gun Assy.   | 1     |
| 3    | 9.802-164.0 | Coupler, 1/4" Female, Brass                                   | 2     |
| 4    |             | Nozzle, Please See Exploded Views For Sizes                   |       |
| 5    | 8.739-183.0 | Hose, 3/8" x 50', 2 Wire, Tuff-Flex ( 373539)                 | 1     |
|      | 8.739-011.0 | Hose, 3/8" x 50', 1 Wire, Tuff-Skin ( 252739, 282039, 303039) | 1     |
| 6    | 9.802-166.0 | Coupler, 3/8" Female, Brass                                   | 1     |
| 7    | 9.802-216.0 | Injector, Detergent, Non-Adjust, 3-5 GPM, .083                | 1     |
| 8    | 6.390-126.0 | Clamp, Hose   | 2     |
| 9    | 9.802-251.0 | Tube, 1/4" x 1/2" Clear Vinyl                                 | 6 ft. |
| 10   | 8.707-057.0 | Strainer  | 1     |