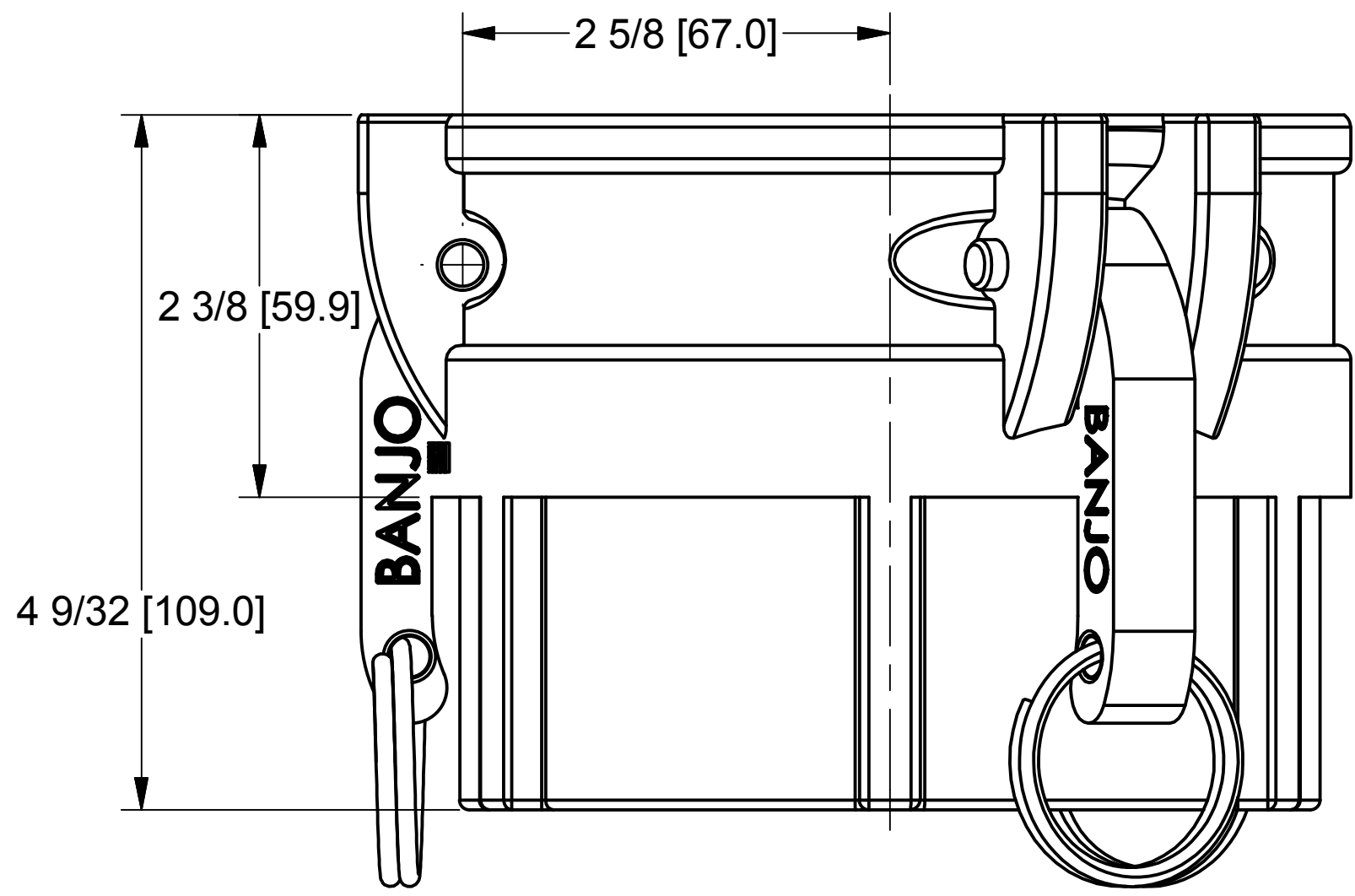
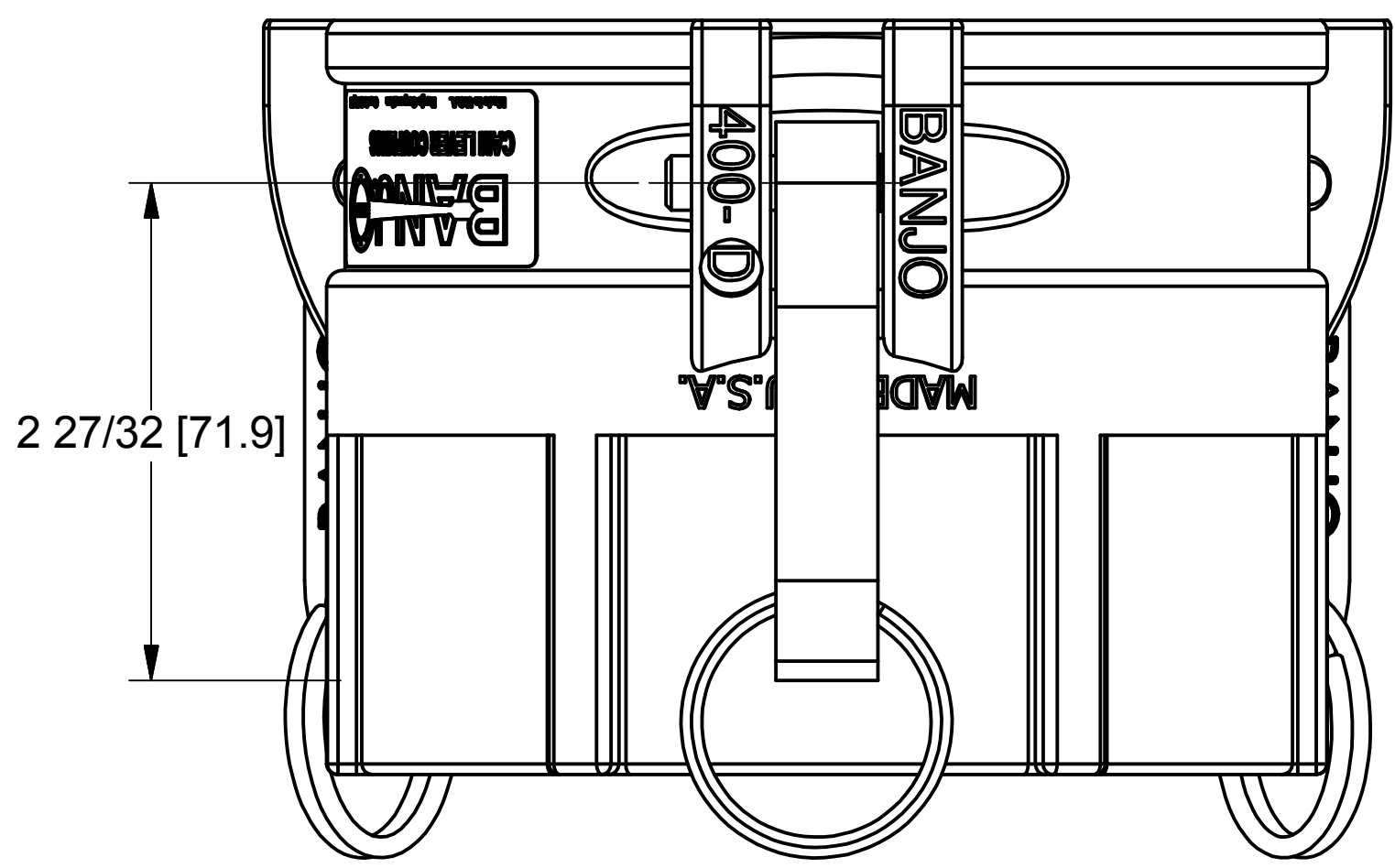
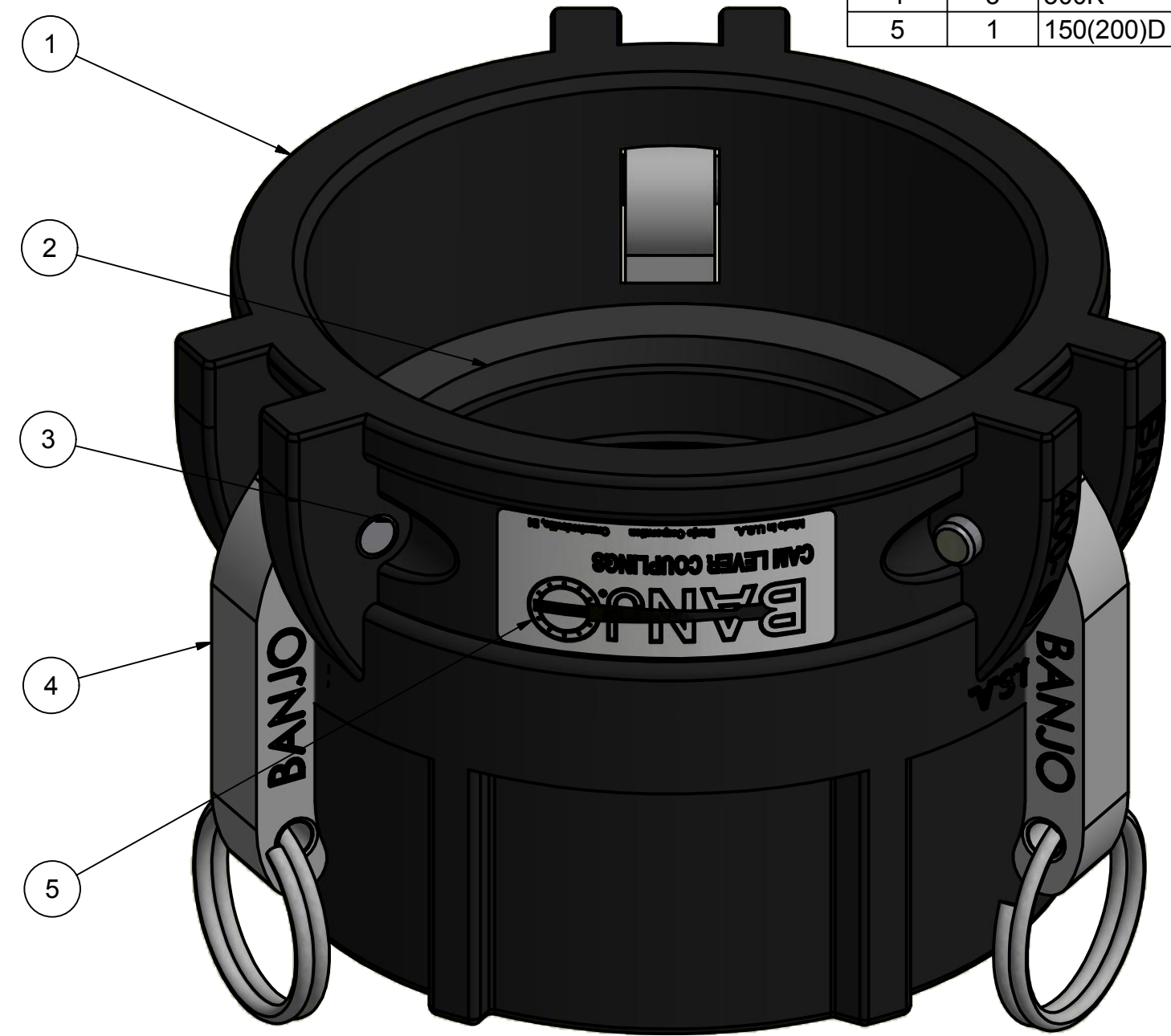
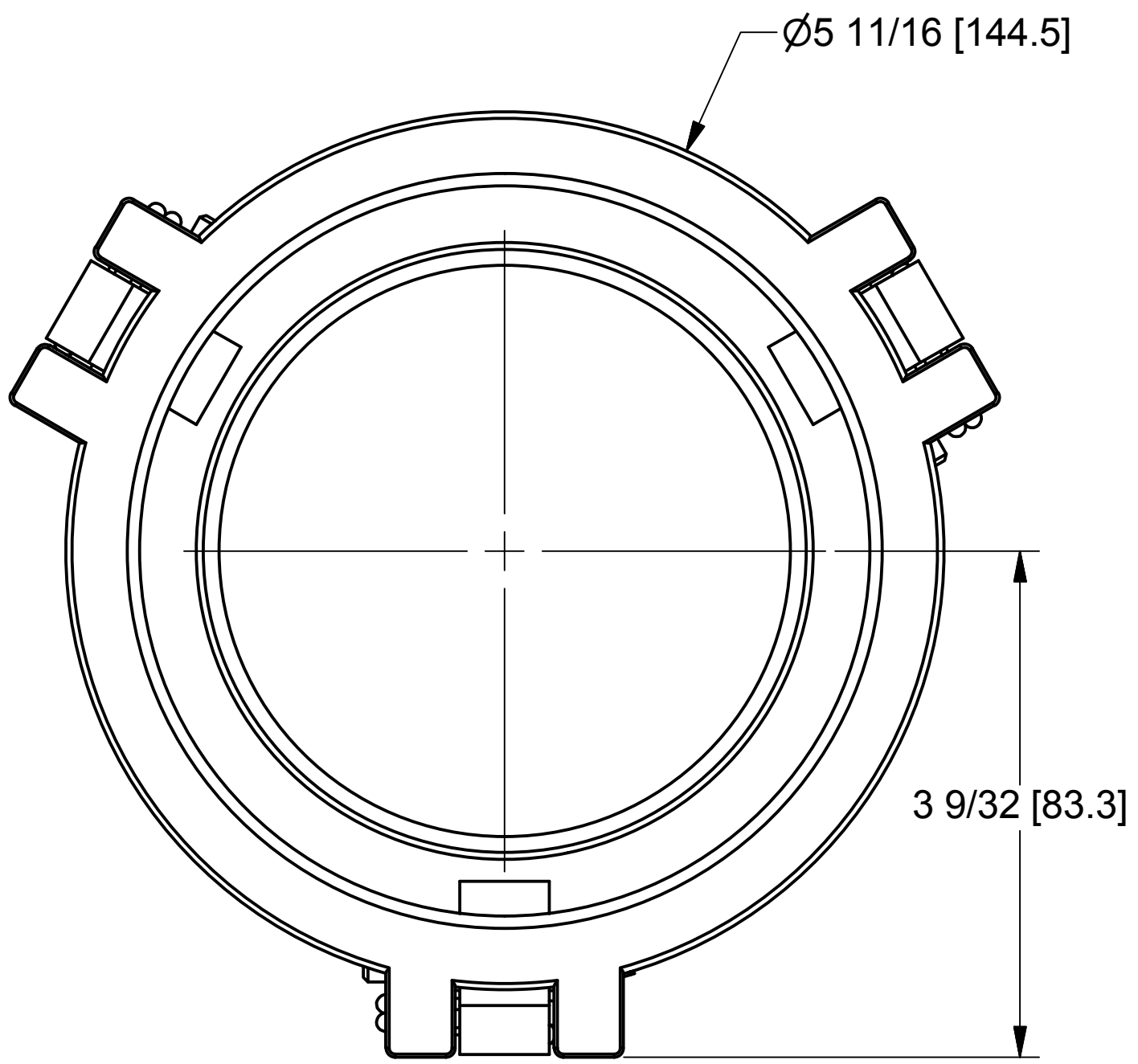


Parts List				
ITEM	QTY	PART NUMBER	DESCRIPTION	
1	1	400XMD	4" Female Coupler X 4" Female NPT, Drilled	
2	1	400G	4" Coupling Gasket	
3	3	300P	CAM ARM PIN	
4	3	300K	CAM ARM	
5	1	150(200)D	CAM LEVER COUPLING DECAL	



THIS DRAWING AND ALL INFORMATION CONTAINED THEREON ARE THE EXCLUSIVE PROPERTY OF BANJO CORPORATION.

UNLESS SPECIFICALLY NOTED, THIS DRAWING AND ITEMS SHOWN ON THIS DRAWING ARE SUBJECT TO CHANGE AT ANY TIME.

**BANJO CORPORATION**

BANJO CORPORATION  
 150 BANJO DRIVE, CRAWFORDSVILLE, IN 47933  
 WEB SITE: WWW.BANJOCORP.COM  
 E-MAIL: BANJOSALES@IDEXCORP.COM

DESCRIPTION  
 4" Female Coupler X 4" Female NPT

PART NUMBER  
 400D