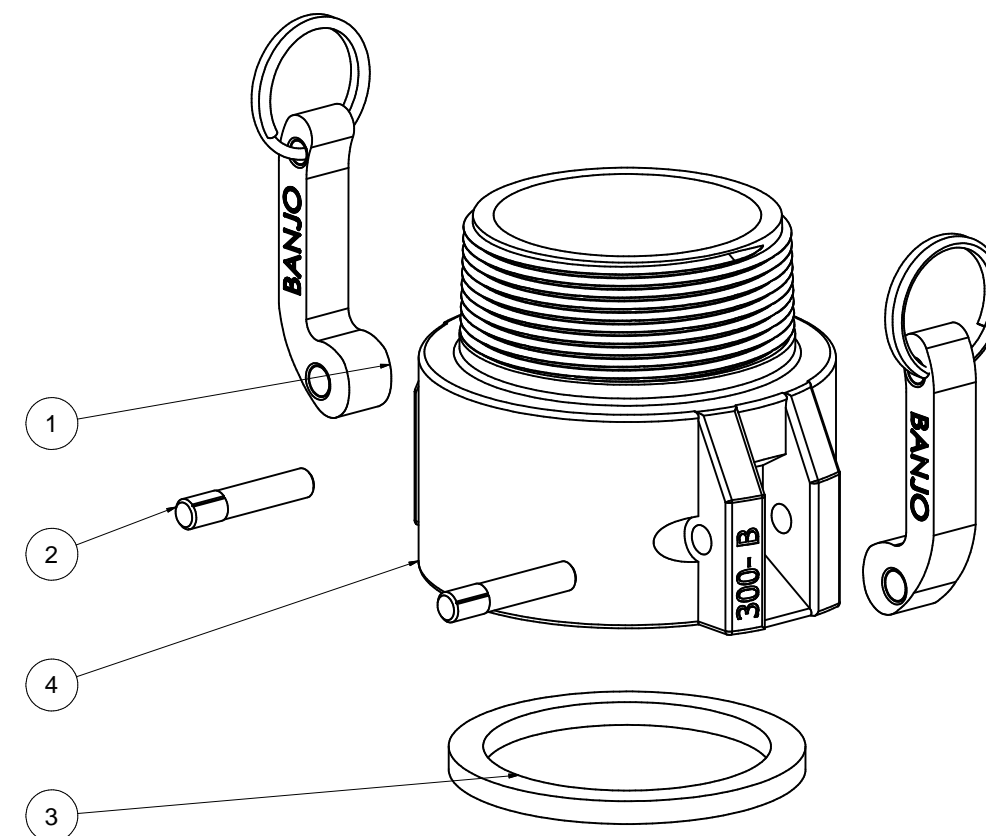
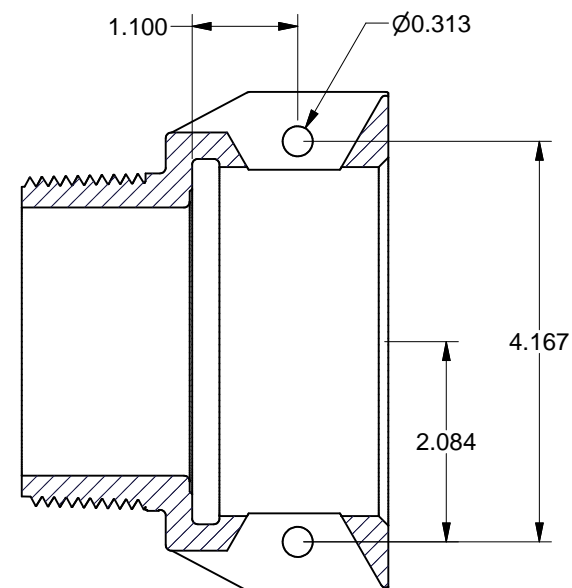
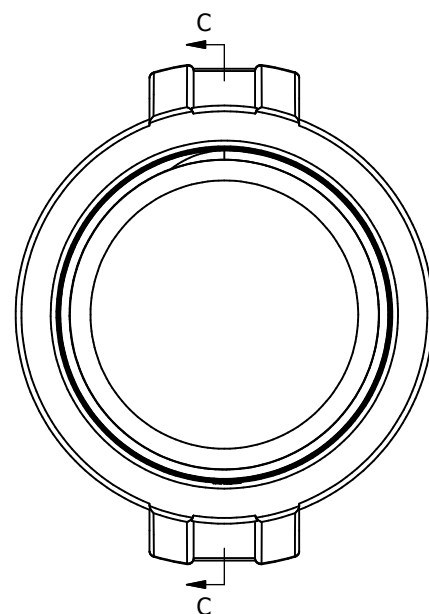
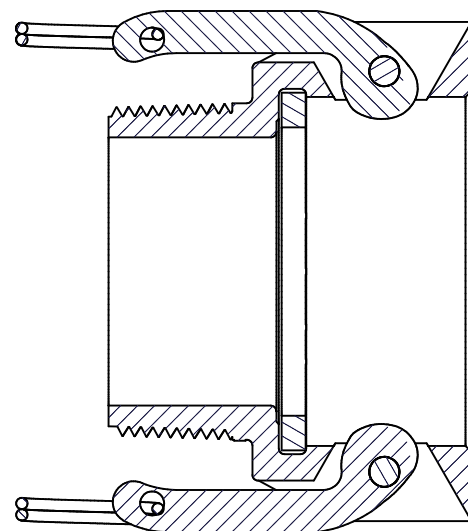
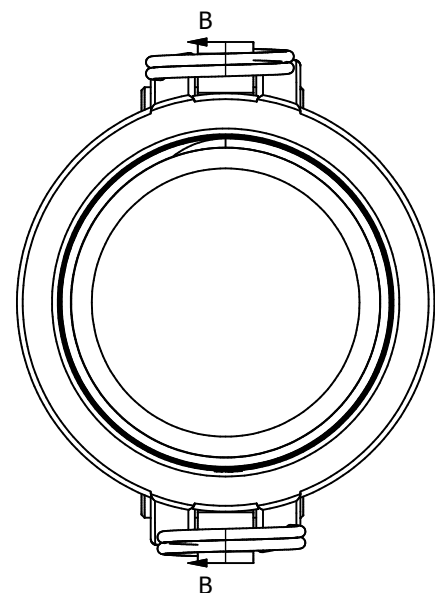



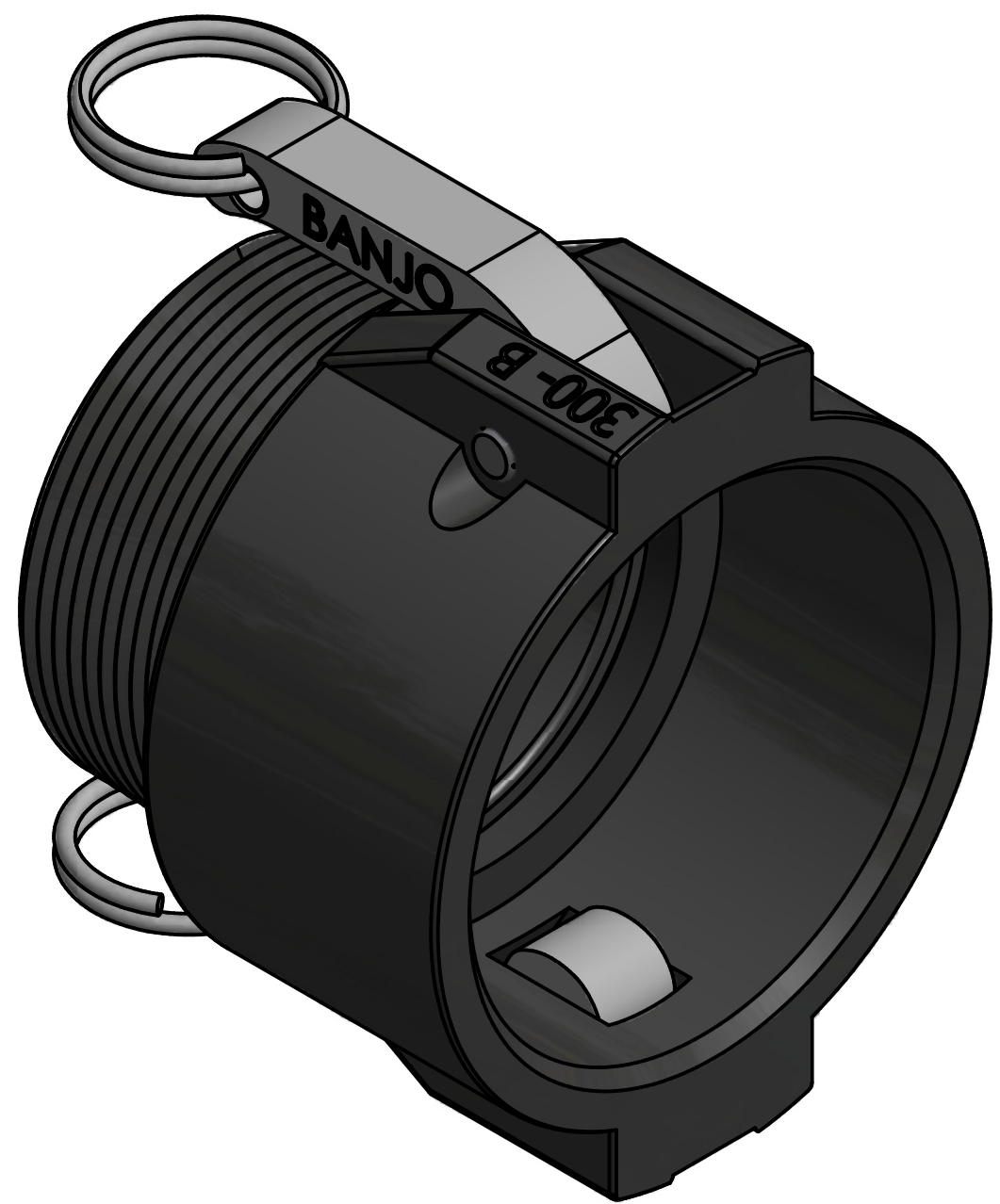
Parts List			
ITEM	QTY	PART NUMBER	DESCRIPTION
1	2	300K	CAM ARM
2	2	300P	CAM ARM PIN
3	1	300G	3" Coupling Gasket
4	1	300XMB	3" FML COUPLING X 3" MALE NPT
5	1	150(200)D	Sticker (Not Shown)



NOTE:  
COMPRESSION TO BE 0.030/0.045


SEE STICKER PLACEMENT BOOK FOR STICKER PLACEMENT

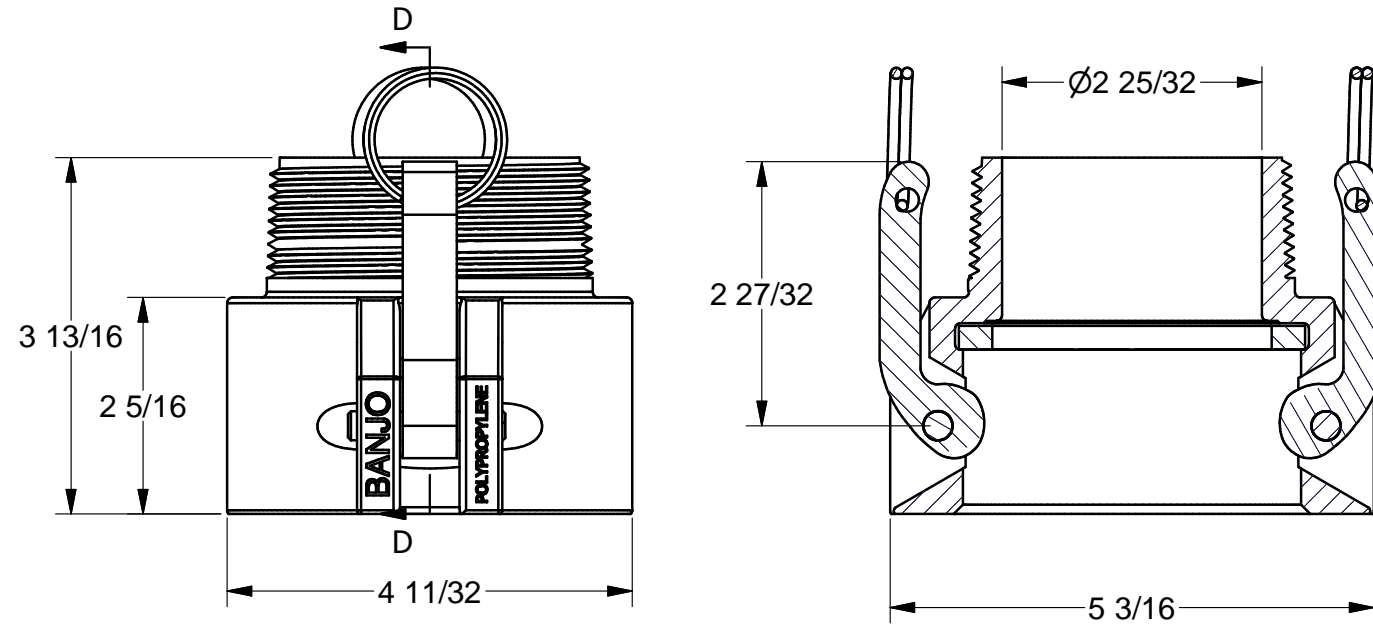
TOLERANCE UNLESS OTHERWISE SPECIFIED DECIMALS 0.00 = +/- 0.010 DECIMALS 0.000 = +/- 0.005 FRACTIONS 1/32 = +/- 1/32 ANGLES = +/- 1 BREAK ALL SHOWN CORNERS W/ 1/32 R UNLESS OTHERWISE SPECIFIED		 <b>BANJO CORPORATION</b> 150 BANJO DRIVE, CRAWFORDSVILLE, IN 47933	
DRAWN ETO	10/16/2002		
CHECKED		SIZE	DWG TYPE
QA		D	ENG
MFG		DWG NO	300B
APPROVED		SCALE	
N/A A MOVED TO INVENTOR 5/10/11 BAE ZONE REV DESCRIPTION DATE APPROVED		REVISION HISTORY SHEET 1 OF 3	



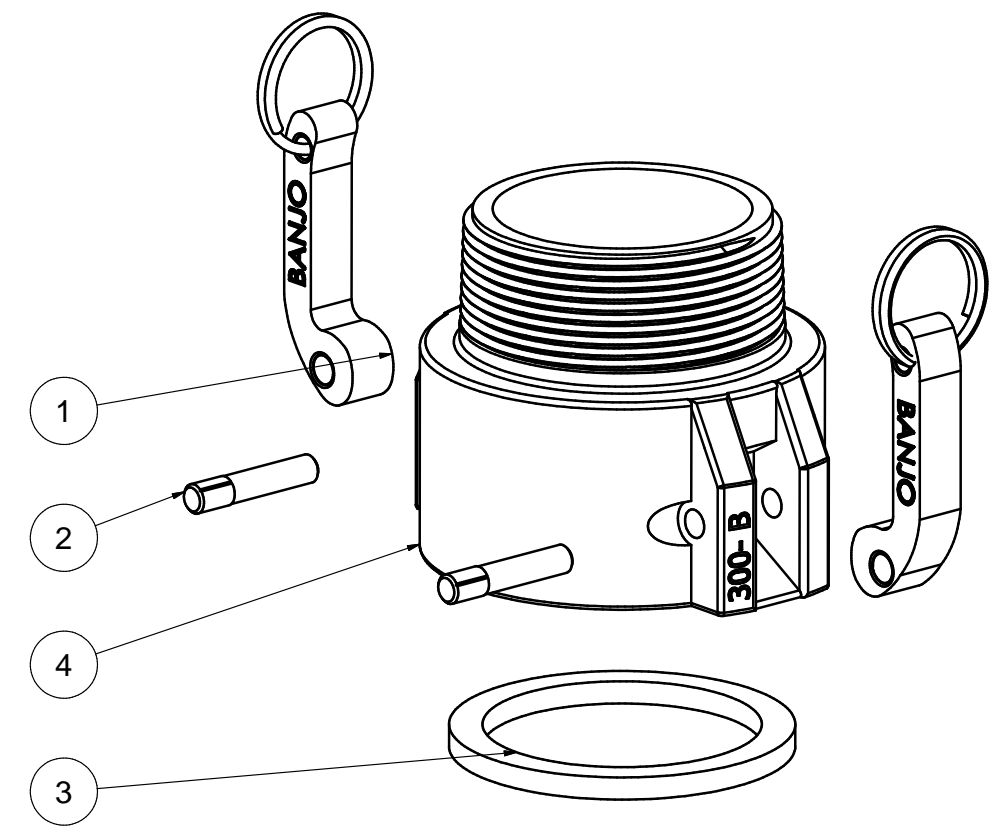
<sup>2</sup>  
 1:1 Measure Gasket Thickness

<sup>7</sup>  
 2:1 Compression Measurement. Use the normal method. Measure BANJO side first. Compression to be 0.030/0.045

TOLERANCE UNLESS OTHERWISE SPECIFIED DECIMALS 0.00 = +/- 0.010 DECIMALS 0.000 = +/- 0.005 FRACTIONS 1/X = +/- 1/32 ANGLES = +/- 1 BREAK ALL SHOWN CORNERS W/ 1/32 R UNLESS OTHERWISE SPECIFIED			
DRAWN <b>ETQ</b>	DATE 10/16/2002	<b>BANJO CORPORATION</b> 150 BANJO DRIVE, CRAWFORDSVILLE, IN 47933	
		TITLE 3" Coupling X 3" Male NPT	
SIZE B	DWG TYPE INF	DWG NO 300B	REV
SCALE		SHEET 2 OF 3	




Parts List			
ITEM	QTY	PART NUMBER	DESCRIPTION
1	2	300K	CAM ARM
2	2	300P	CAM ARM PIN
3	1	300G	3" Coupling Gasket
4	1	300XMB	3" FML COUPLING X 3" MALE NPT
5	1	150(200)D	Sticker (Not Shown)



THIS DRAWING AND ALL INFORMATION CONTAINED THEREON ARE THE EXCLUSIVE PROPERTY OF BANJO CORPORATION.

UNLESS SPECIFICALLY NOTED, THIS DRAWING AND ITEMS SHOWN ON THIS DRAWING ARE SUBJECT TO CHANGE AT ANY TIME.



**BANJO CORPORATION**

150 BANJO DRIVE, CRAWFORDSVILLE, IN 47933  
 WEB SITE: WWW.BANJOCORP.COM  
 E-MAIL: SALES1@BANJOCORP.COM

DESCRIPTION	3" Coupling X 3" Male NPT
PART NUMBER	300B