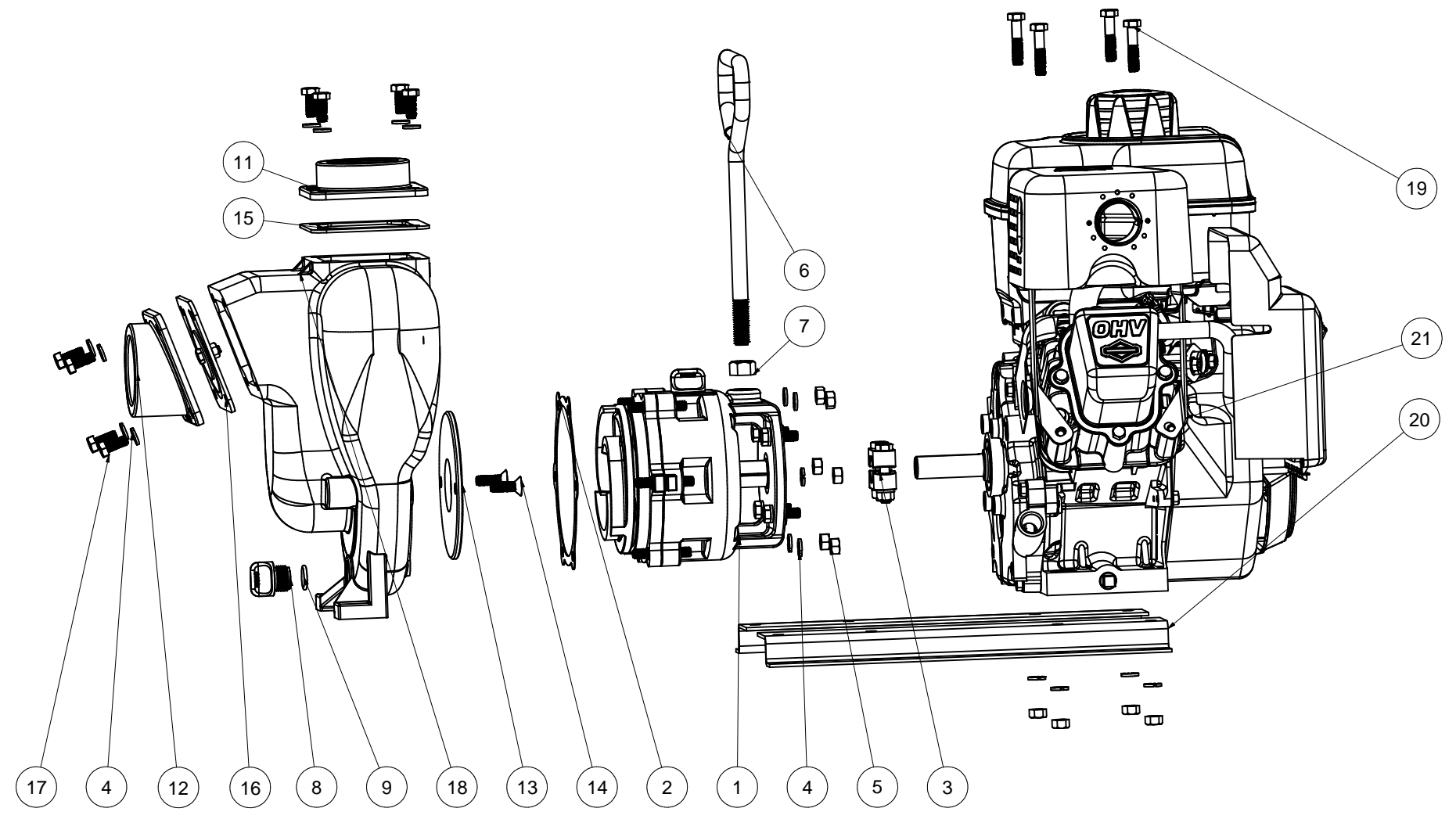


Parts List			
ITEM	QTY	PART NUMBER	DESCRIPTION
1	1	17200ASS	2" SS WET SEAL ASSY, NEW
2	1	17018	PUMP ADAPTER GASKET
3	1	17123	CI PUMP KEYS CLAMP
4	18	V10118	5/16" LOCKWASHER
5	10	V10119	5/16" HEX NUT
6	1	15022	2" PUMP HANDLE
7	1	17010	1/2-13 HEX NUT
8	1	12777	1/2" DRAIN PLUG
9	1	UV15163V	2-114 O'RING
10	1	12910	DECAL (N/S)
11	1	17000SS	2" OUTLET FLANGE
12	1	17002SS	2" INLET FLANGE
13	1	17011SS	WEAR PLATE
14	2	17130SS	5/16-18 X 1" FHSCS
15	1	17014	OUTLET FLANGE GASKET, FKM
16	1	17017	CI PUMP CHECK VALVE ASSY
17	8	17019	5/16-18 X 3/4" HHCS
18	1	17026SSX	2" PUMP HOUSING
19	4	17034	5/16-18 X 1-1/2" HHCS
20	1	17033	Z-RAIL (PAIR)
21	1	E6.5PRO	6.5 HP B&S ENGINE



THIS DRAWING AND ALL INFORMATION CONTAINED THEREON ARE THE EXCLUSIVE PROPERTY OF BANJO CORPORATION.

UNLESS SPECIFICALLY NOTED, THIS DRAWING AND ITEMS SHOWN ON THIS DRAWING ARE SUBJECT TO CHANGE AT ANY TIME.

**BANJO CORPORATION**  
 150 BANJO DRIVE, CRAWFORDSVILLE, IN 47933  
 WEB SITE: WWW.BANJOCORP.COM  
 E-MAIL: SALES1@BANJOCORP.COM

DESCRIPTION  
**2" SS WET SEAL PUMP W/ 6.5 HP B&S**

PART NUMBER  
**201P6PROSSW**