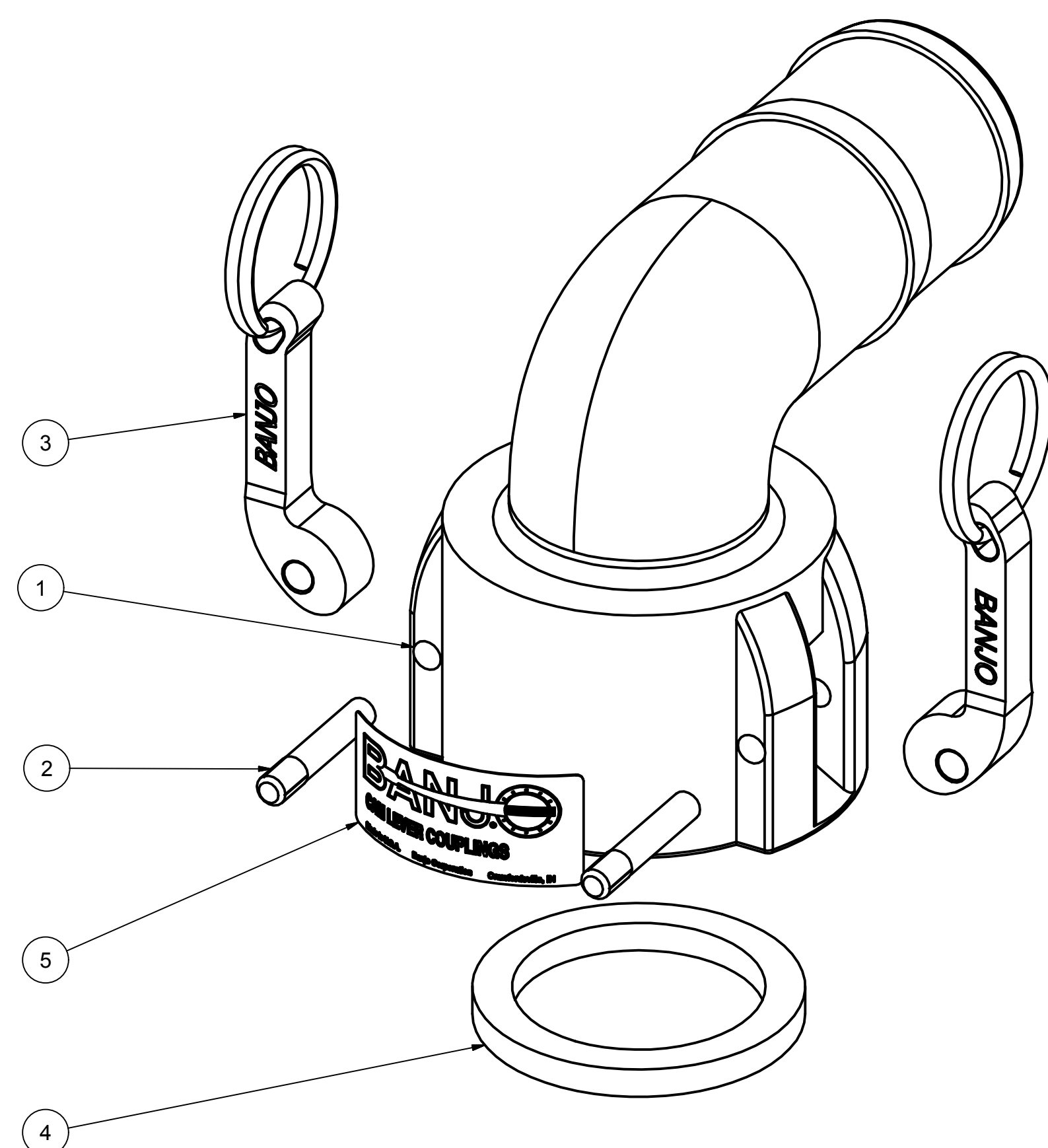
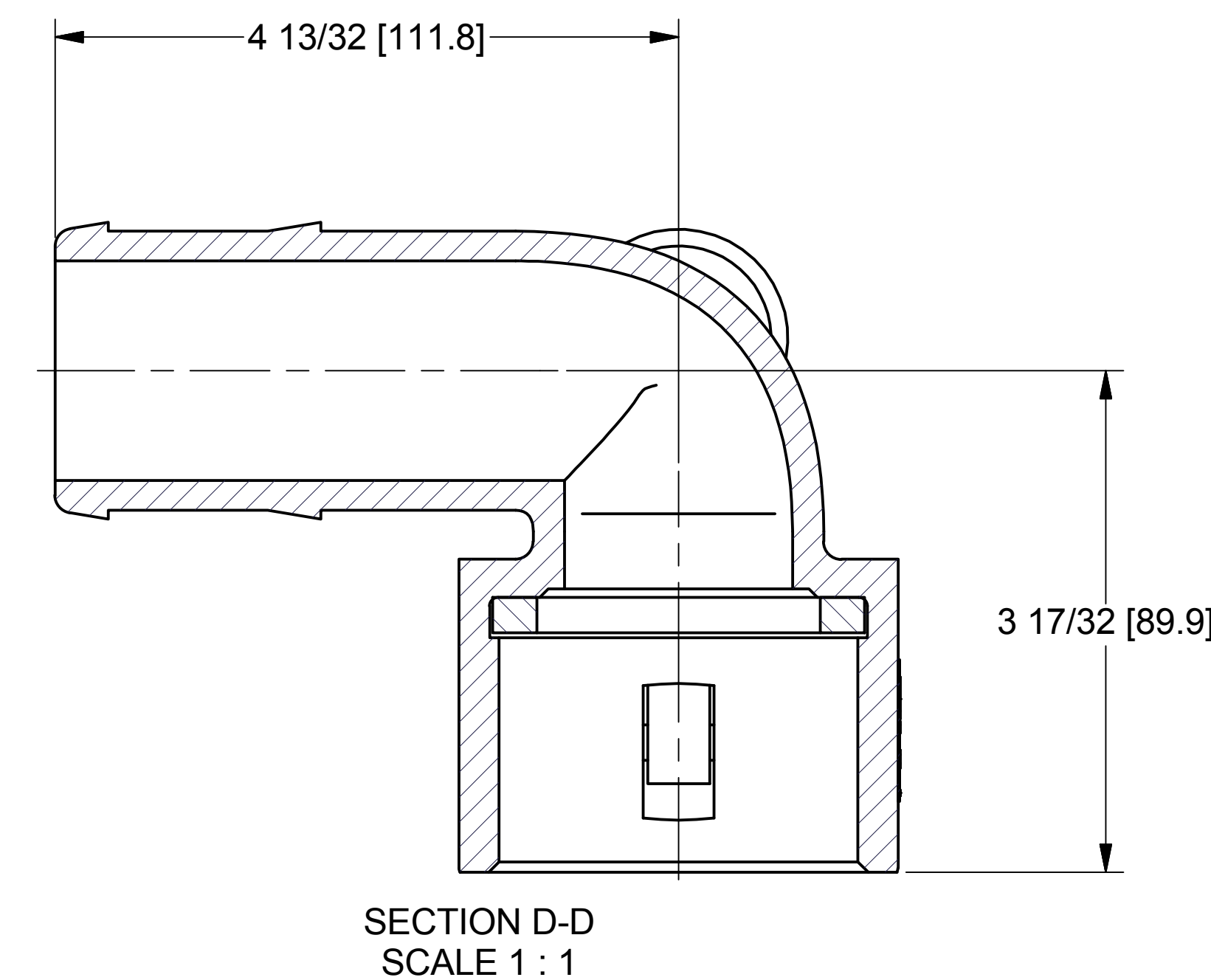
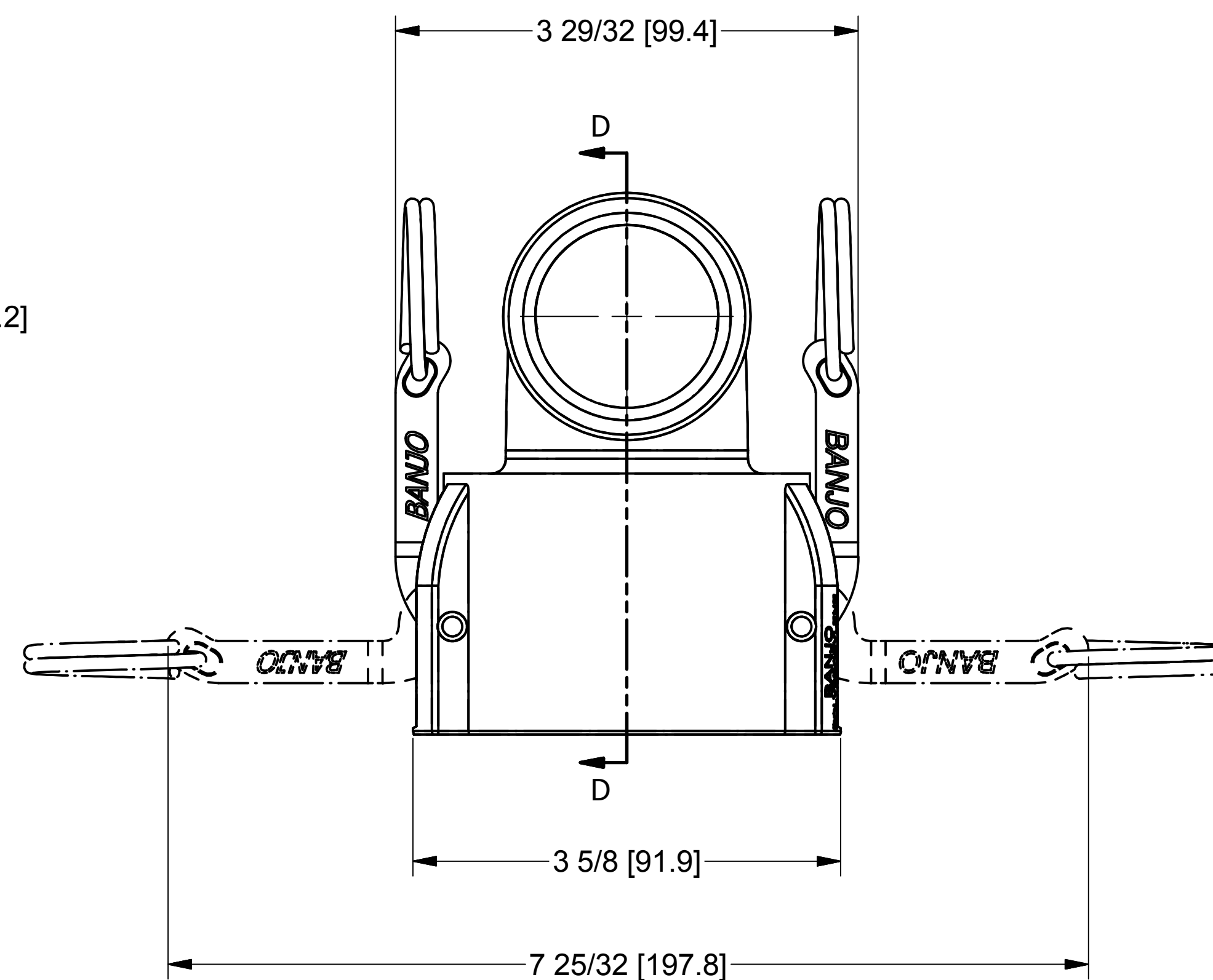
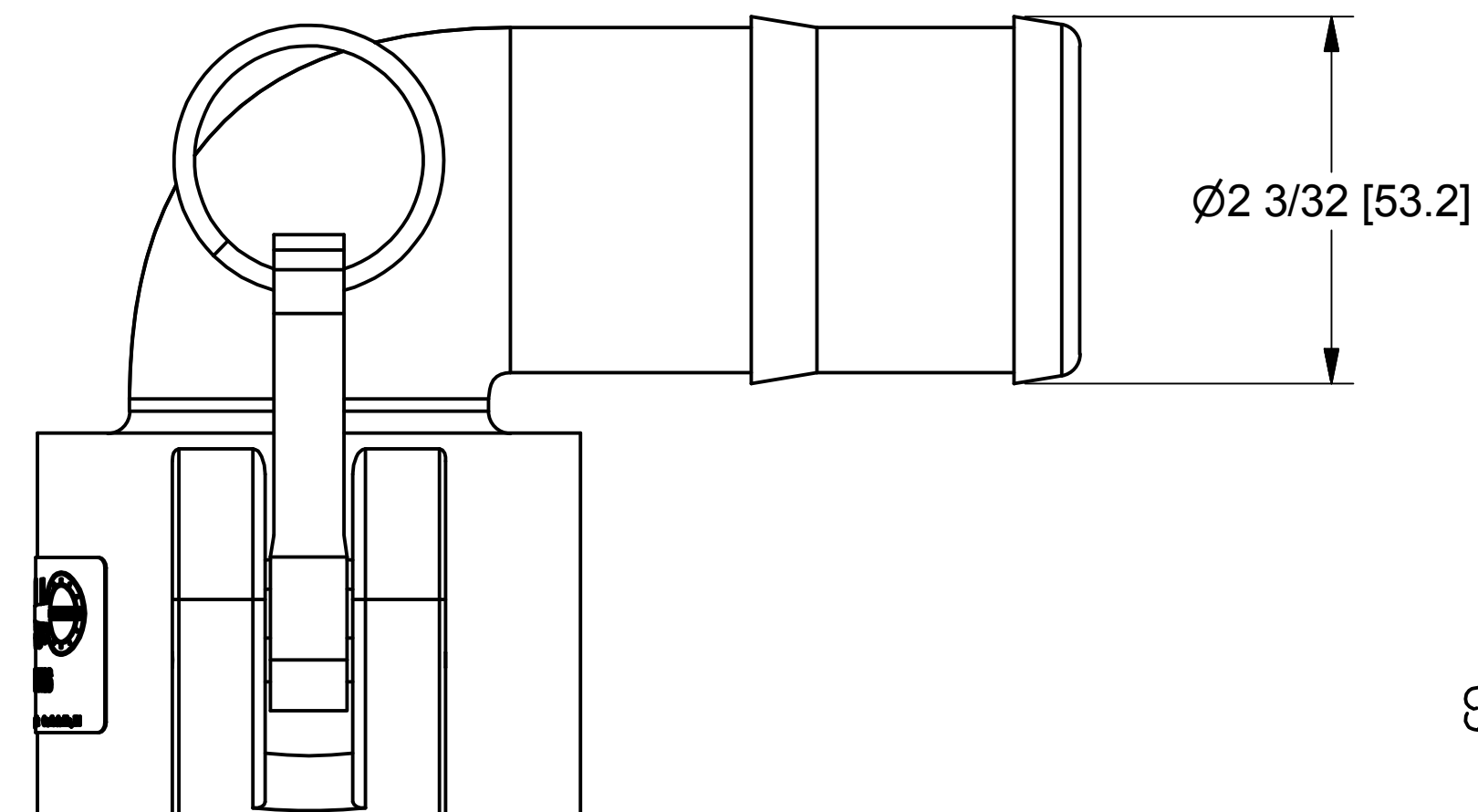


Parts List				
ITEM	QTY	PART NUMBER	DESCRIPTION	
1	1	200XC-90	2" Female Coupling X 2" HB, 90°, Molded	
2	2	200P	CAM ARM PIN	
3	2	150(200)K	1 1/2" & 2" CAM ARM	
4	1	200G	2" Coupling Gasket	
5	1	150(200)D	CAM LEVER COUPLING DECAL	



THIS DRAWING AND ALL INFORMATION CONTAINED THEREON ARE THE EXCLUSIVE PROPERTY OF BANJO CORPORATION.

UNLESS SPECIFICALLY NOTED, THIS DRAWING AND ITEMS SHOWN ON THIS DRAWING ARE SUBJECT TO CHANGE AT ANY TIME.



**BANJO CORPORATION**  
 150 BANJO DRIVE, CRAWFORDSVILLE, IN 47933  
 WEB SITE: WWW.BANJOCORP.COM  
 E-MAIL: SALES1@BANJOCORP.COM

DESCRIPTION  
**2" Female Coupling X 2" HB, 90°**

PART NUMBER  
**200C90**