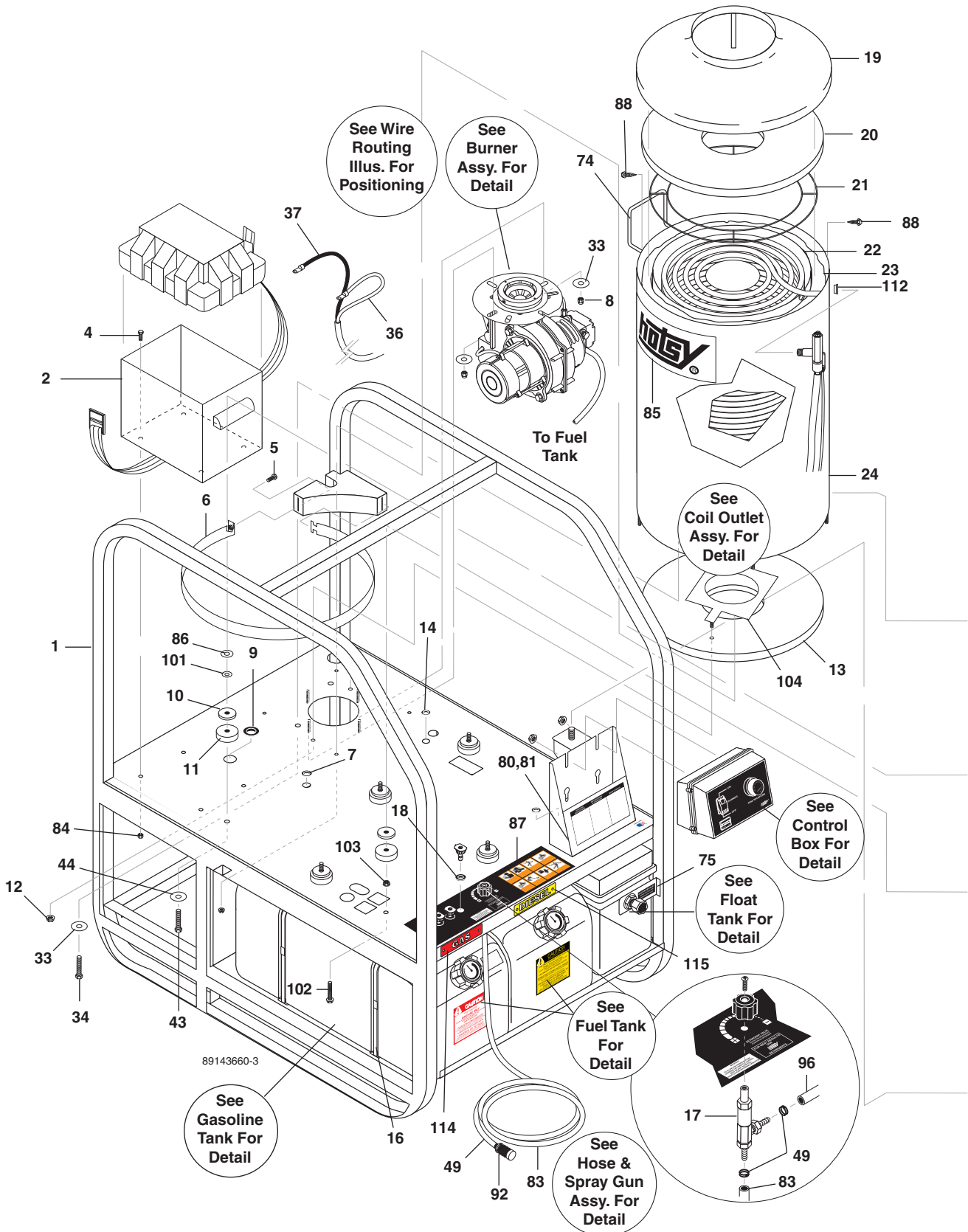


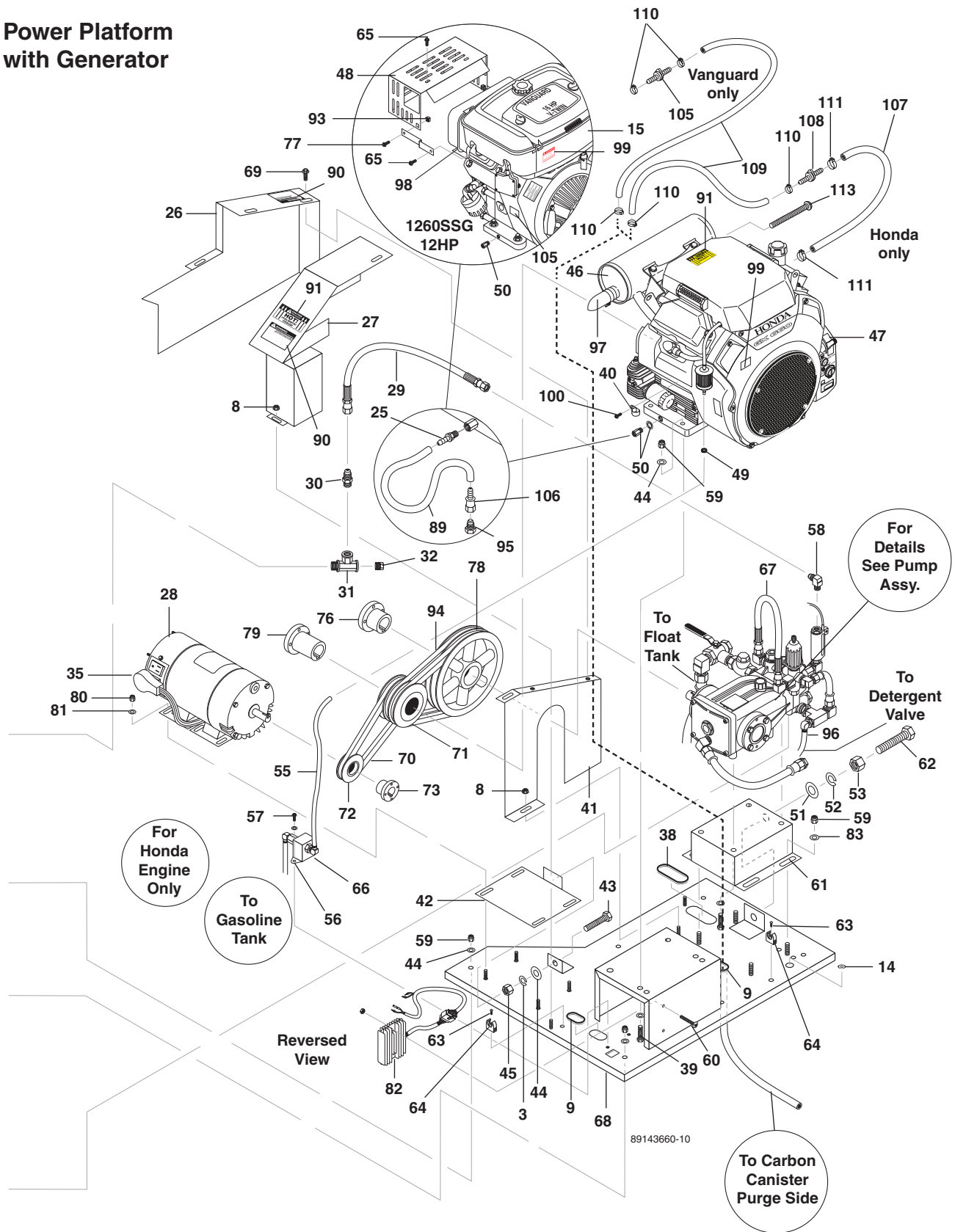
1260SSG, 1270SSG, 1280SSG, 1285SSG 1290SSG EXPLODED VIEW

Left Side



1260SSG, 1270SSG, 1280SSG, 1285SSG 1290SSG EXPLODED VIEW

Power Platform with Generator



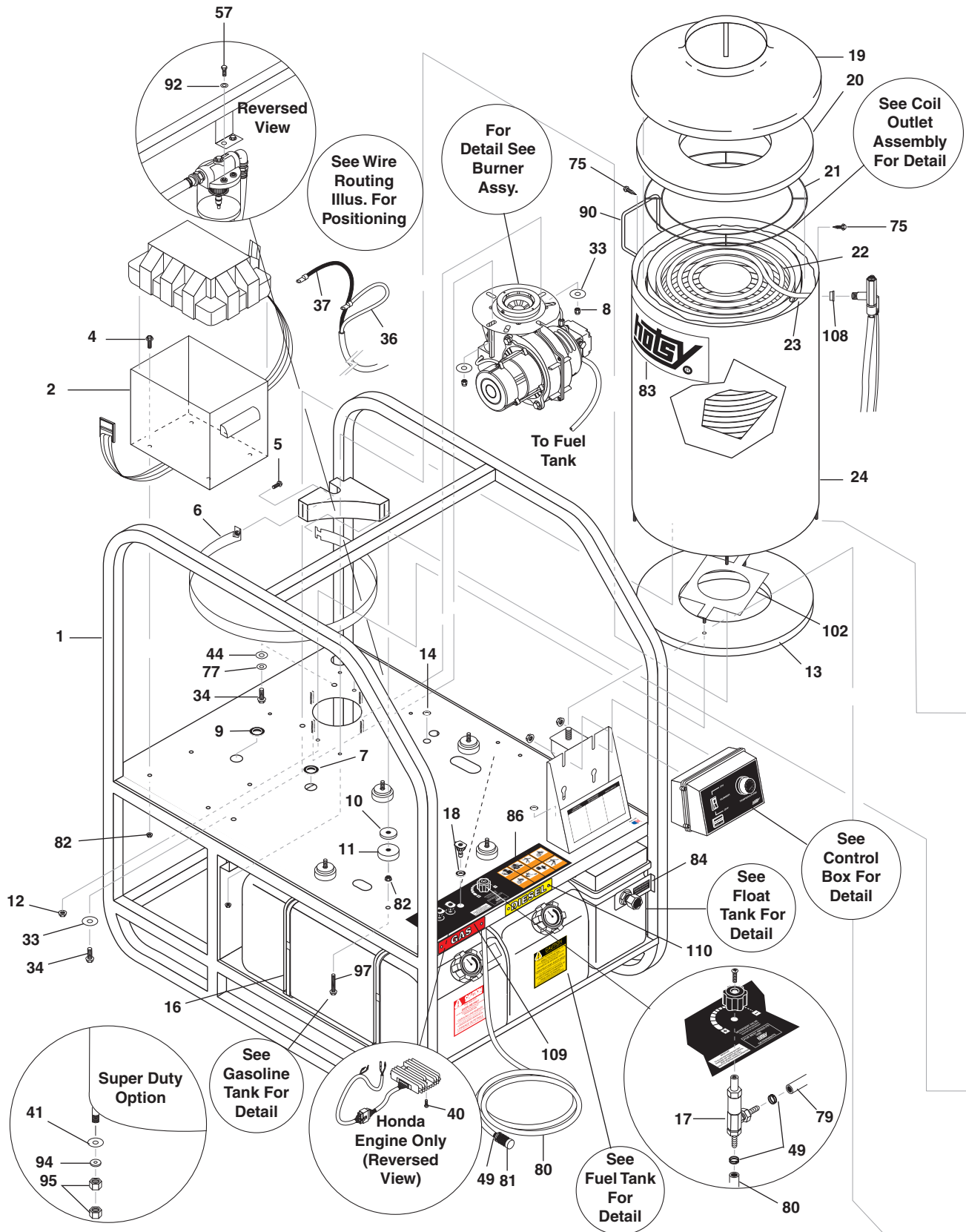
1260SSG, 1270SSG, 1280SSG, 1285SSG, 1290SSG PARTS LIST

ITEM	PART NO.	DESCRIPTION	QTY	ITEM	PART NO.	DESCRIPTION	QTY
1	8.912-121.0	Chassis Assembly, Hotsy 1200 Series	1	32	8.706-243.0	Plug, 1/2" Square Head, Galvanized	1
2	8.706-600.0	Box, Battery, M-100	1	33	8.719-000.0	Washer, 5/16" x 1-1/4" Fender, SAE	7
3	9.802-814.0	Washer, 3/8" Lock	1	34	9.802-756.0	Bolt, 5/16" x 1" NC HH, Whiz Loc	3
4	9.802-708.0	Screw, 5/16"-18 x 3/4"	2	35	8.752-150.0	Cord, Molded, 14/3 SJEOW	1 Pc
5	9.802-832.0	Bolt, 5/16" x 2 3/4" Whizlock	1	36	8.753-358.0	Cable, Battery, 61" Eye To Eye Red	1
6	8.912-129.0	Strap, Coil, Hotsy 1200	1	37	8.753-359.0	Cable, Battery, 61" Eye To Eye Black	1
7	8.706-547.0	Grommet, 1/2" x 1" x 1/2"	1	38	9.803-545.0	Grommet, 2-1/8" x 2-7/8" x 7/16" Rubber	1
8	9.802-778.0	Nut, 5/16" Flange, Whiz Loc	14	39	9.802-716.0	Bolt, 5/16" x 2" NC HH (1260SSG)	4
9	9.802-065.0	Grommet, 1-5/16" Rubber (1260SSG) (1270SSG, 1280SSG, 1290SSG)	2 3		9.802-728.0	Bolt, 3/8" x 2" NC HH	5
10	9.802-067.0	Bumper Pad, Engine	7	40	9.802-207.0	Clip, .25 ID Round	1
11	9.802-066.0	Pad, Soft Rubber, 50 Duro	7	41	8.911-249.0	Weldment, Belt Guard Back Plate (1280SSG, 1290SSG)	1
12	9.802-778.0	Nut, 3/8" Whiz	2"		8.911-254.0	Weldment, Belt Guard Back Plate (1260SSG, 1270SSG)	1
13	8.751-741.0	Insulation Pancake, 14"	1	42	8.912-125.0	Bracket, Gen. Take Up, Hotsy 1200	1
14	8.706-733.0	Bushing, 1/2" Snap	2	43	9.803-560.0	Screw, 3/8" x 2" HH NC, Whiz Loc	2
15	8.900-282.0	Label, Factory Set RPM	1	44	9.802-807.0	Washer, 3/8" SAE Flat	18
16	8.904-536.0	Strapping, 1/2" x 48" w/Clamps	4	45	9.802-789.0	Nut, 3/8" Hex, NC	1
17	9.802-188.0	Valve, Metering, 1/4" Hose	1	46	9.802-672.0	Muffler, Exhaust, Briggs Vanguard Hi-Right (1260SSG)	1
18	8.706-547.0	Grommet, 1/2 x 1" x 1/2'	3		8.718-040.0	Muffler, Vanguard (1285SSG)	1
19	8.911-328.0	Lid, 18" OD x 10" ID, Weldment	1		8.750-497.0	Muffler, Honda GX630/660, K1, Right	1
20	8.717-442.0	Insulation, Top Head, 18" OD x 8 ID, Fiberglass	1	47	8.715-070.0	Engine, Vanguard, 16HP (1260SSG)	
21	8.719-935.0	Ring, Insulation Retainer, 18" Top Hat	1		8.752-149.0	Engine, Honda, GX630R, No Throttle(1270SSG, 1280SSG, 1290SSG)	1
22	8.911-930.0	Coil, 18"	1		8.715-067.0	Engine, Vanguard, 21HP (1285SSG)	1
	8.912-098.0	Coil, 18" Super Duty	1	48	9.802-867.0	Guard, Muffler, Briggs (1260SS/G)	4
23	8.717-446.0	Insulation, Blanket, Fiberglass	1		8.749-367.0	Guard, Muffler, Vanguard (1285SS/G)	4
24	8.911-331.0	Wrap, Coil Outer Assembly, Hotsy 1200	1	49	6.390-126.0	Clamp, Hose, .46 - .54 ST	4
25	8.707-019.0	Hose Barb, 1/2" Barb x 3/8" MNPT, Brass Hex	1	50	8.750-737.0	Adapter, M20-1.5 x 3/8" FPT (Honda) Adapter, 3/8" Male x 3/8" Female (Vanguard)	1
26	8.911-247.0	Guard, Pulley Belt	1	51	9.802-809.0	Washer, 1/2" Flat, SAE	1
27	8.911-248.0	Weldment, Gen. Belt Guard (1270SSG, 1280SSG, 1290SSG)	1	52	9.803-517.0	Washer, 1/2" Lock	1
	8.911-255.0	Weldment, Gen. Belt Guard (1260SSG, 1285SSG)	1	53	9.802-790.0	Nut, 1/2" Hex, NC	1
28	8.716-610.0	Generator, 2FSM2PC-1/A, Winco	1	54	9.802-789.0	Nut 3/8 Hex (Super Duty Only)	6
29	8.918-425.0	Hose, 3/8" x 29", 2 Wire, Pressure Loop	1				
	8.918-426.0	Hose, 3/8" x 32", 2 Wire, (Super Duty Only)	1				
30	9.802-038.0	Nipple, 1/2" JIC x 1/2" MPT Pipe	1				
31	8.706-236.0	Tee, 1/2" Street	1				

1260SSG, 1270SSG, 1280SSG, 1285SSG, 1290SSG PARTS LIST

ITEM	PART NO.	DESCRIPTION	QTY	ITEM	PART NO.	DESCRIPTION	QTY
55	9.802-254.0	Hose, 1/4" Push-On (Honda Engine Only)	22"	87	8.900-925.0	Label, Hotsy 1200 Series	1
56	8.933-005.0	Pump, 12V Fuel, Facet (Honda Engine Only)	1	88	8.718-940.0	Screw, #10 x 3/4, Tek SS	2
57	8.718-582.0	Bolt, 1/4" x 1/2" NC HH	2	89	9.802-259.0	Hose, 1/2" Push-On	11"
58	9.802-039.0	Elbow, 1/2" JIC x 3/8", 90°	1	90	8.932-965.0	Label, Exposed Pulleys	2
59	9.802-779.0	Nut, 3/8" ESNA, NC	15	91	9.800-006.0	Label, HOT w/Arrows	2
60	9.802-762.0	Screw, 10/32" x 1-1/4" (Honda Engine Only)	2	92	8.707-058.0	Strainer, 1/4" Brass w/Check Valve	1
61	8.911-830.0	Slider, Pump, Weldment	1	93	9.802-868.0	Brace, Vanguard Muffler	2
62	9.802-740.0	Bolt, 1/2" x 3-1/2" NC HH	1	94	Engine Belt, Please See Specifications Page		
63	8.718-937.0	Screw, #8 x 3/4", Phillips, Zinc Plated, Hex, Tek	2	95	9.802-126.0	Plug, 1/2" JIC Flare	1
64	9.802-203.0	Clamp, 1/2" Ro-Clip, Kleinhuis	2	96	9.802-252.0	Hose, 1/4" x 1/2" Braided Vinyl	24"
65	9.802-830.0	Screw, 1/4-20 x 1/2" HH	4	97	9.802-691.0	Exhaust, Deflector	1
66	8.706-955.0	Hose Barb, 1/4" Barb x 1/8" ML Pipe, 90° (Honda Engine Only)	2	98	9.802-794.0	Nut, 1/4" x 12, Cage (Vanguard Engine Only)	2
67	8.918-423.0	Hose, 3/8" x 22", 2 Wire, Pressure Loop	1	99	8.917-015.0	Label, Regulation 4442.6	1
	8.918-422.0	Hose, 3/8" x 20", 2 Wire Pressure Loop (Super Duty Only)	1	100	8.718-732.0	Screw, 12-14 x 3/4" PL, Selfor, Hex	1
68	8.912-123.0	Platform, Power (1270SSG, 1280SSG, 1290SSG)	1	101	9.802-814.0	Washer, 3/8 Split Ring Lock (Super Duty Only)	3
	8.912-130.0	Platform, Power (1260SSG, 1285SSG)	1	102	8.718-674.0	Bolt, 3/8" x 2-1/4", Gr 8.2	6
69	9.803-277.0	Bolt, 5/16" x 1/2", NC Whiz Loc	4	103	9.802-781.0	Nut, 3/8" Whiz	6
70	Belt, Please See Specifications Page			104	8.911-950.0	Insulation Retainer	1
71	Pump Pulley, Please See Specifications Page			105	8.753-269.0	Reducer, 1/4 x 3/16 (Vanguard)	1
72	Motor Pulley, Please See Specifications Page			106	9.802-151.0	Swivel, 1/2" JIC Fem, Push-On	1
73	Motor Bushing, Please See Specifications Page			107	8.711-785.0	Hose 3/8" Push-On (Honda Only)	8"
74	8.719-946.0	Hanger, Hose	1	108	8.753-270.0	Reducer, 1/4 x 3/8 (Honda Only)	1
75	9.800-020.0	Label, Water Inlet (All Except Super Duty)	1	109	9.802-254.0	Hose 1/4" Push-On/Ft	4
76	Engine Bushing, Please See Specifications Page		1	110	8.753-066.0	#7 Clamp (Honda) #7 Clamp (Vanguard)	2 3
77	9.802-754.0	Screw, 1/4" x 1/2" Whiz Loc (Vanguard)	4	111	8.753-065.0	#10 Clamp (Honda)	2
78	Engine Pulley, Please See Specifications Page			112	8.706-728.0	Bushing, 1-3/8" Snap	1
79	Pump Bushing, Please See Specifications Page			113	8.718-781.0	Screw, Pan Head	1
80	9.802-776.0	Nut, 5/16" ESNA	6	114	8.921-830.0	Plate, Gas	1
81	8.718-980.0	Washer, 5/16" Flat, SAE	10	115	8.921831.0	Plate, Diesel	1
82	9.802-695.0	Nut, 10/32" Keps	2				
83	9.802-252.0	Hose, 1/4" x 1/2" Braided Vinyl	6 ft.				
84	9.802-778.0	Nut, 5/16" Whiz Loc	2				
85	8.704-659.0	Label, Hotsy Logo 5 x 11	2				
86	9.802-807.0	Washer, 3/8" Flat	1				

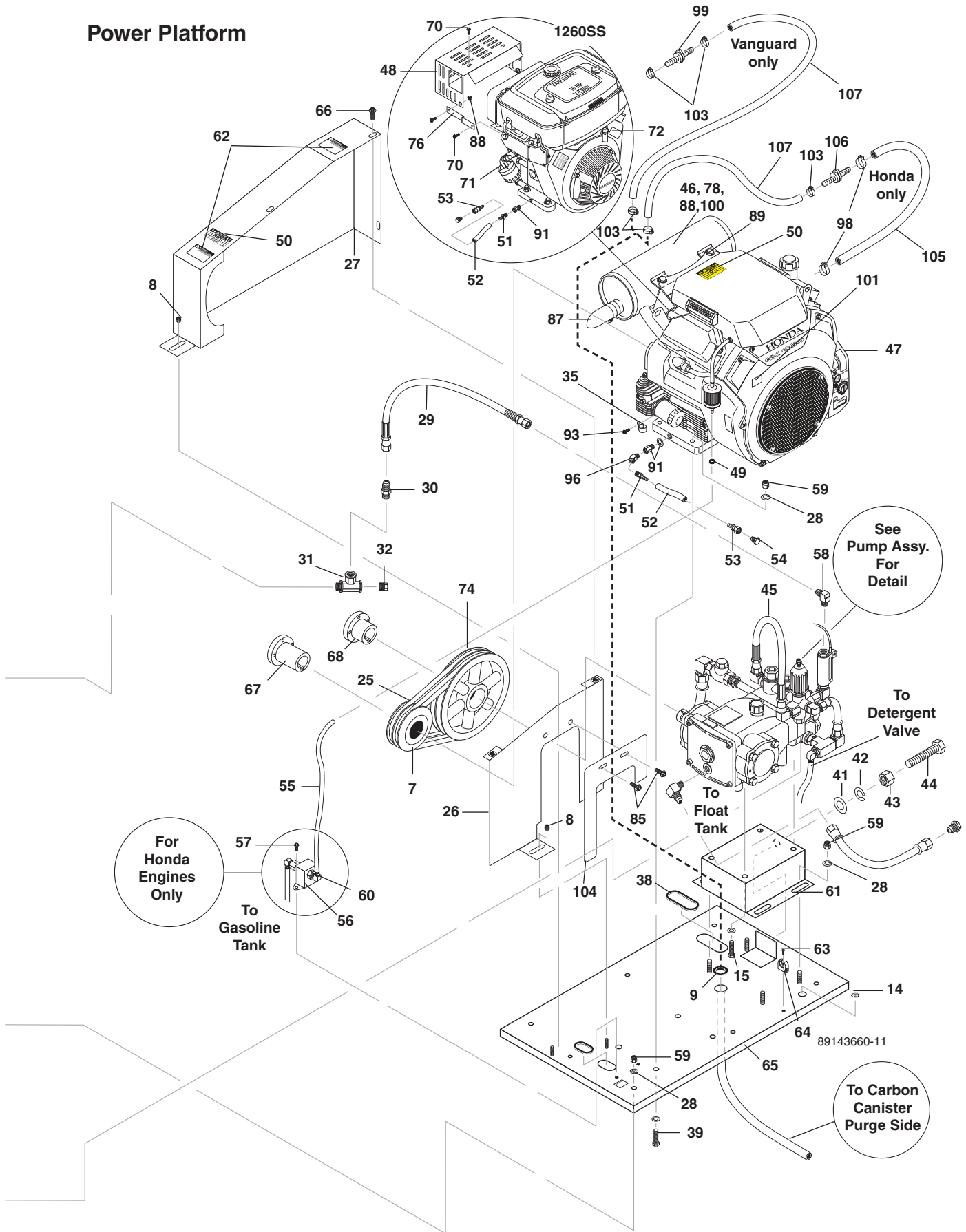
1260SS, 1270SS, 1280SS, 1285SS, 1290SS EXPLODED VIEW



89143660-4

1260SS, 1270SS, 1280SS, 1285SS, 1290SS EXPLODED VIEW

Power Platform



1260SS, 1270SS, 1280SS, 1285SS, 1290SS PARTS LIST

ITEM	PART NO.	DESCRIPTION	QTY	ITEM	PART NO.	DESCRIPTION	QTY
1	8.912-121.0	Chassis Assembly, Hotsy 1200 Series	1	33	8.719-000.0	Washer, 5/16" x 1-1/4" Fender, SAE	7
2	8.706-600.0	Box, Battery, M-100	1	34	9.802-756.0	Bolt, 5/16" x 1" Whiz, NC, HH	3
3	8.718-980.0	Washer, 5/16" x 1" Flat, SAE (1260SS) (1270SS, 1280SS, 1290SS)	10 4	35	8.709-089.0	Hose Clamp	1
4	9.802-708.0	Screw, 5/16"- 18 x 3/4"	2	36	8.753-358.0	Cable, Battery, 61" Eye To Eye Red	1
5	9.802-832.0	Bolt, 5/16" x 2 3/4" Whizlock	1	37	8.753-359.0	Cable, Battery, 61" Eye To Eye Black	1
6	8.912-129.0	Strap, Coil, Hotsy 1200	1	38	9.803-544.0	Grommet, 2-1/8" x 2-7/8" x 7/16" Rubber	1
7	Engine Pulley, Please See Specifications Page			39	9.802-716.0	Bolt, 5/16" x 2" NC HH(1260SS)	4
8	9.802-778.0	Nut, 5/16" Flange, Whiz Loc	14		9.802-728.0	Bolt, 3/8" x 2" NC HH (1270SS,1280SS,1290SS)	4
9	9.802-065.0	Grommet, 1-5/16" Rubber, Drum Cleaner	3	40	9.802-700.0	Bolt, 1/4" x 3/4" NC HH (Honda Only)	2
10	9.802-067.0	Bumper Pad, Engine	6	41	9.802-809.0	Washer, 1/2" Flat, SAE	2
11	9.802-066.0	Pad, Soft Rubber, 50 Duro	6	42	9.803-517.0	Washer, 1/2" Lock	1
12	9.802-778.0	Nut, 5/16 Whiz	2	43	9.802-790.0	Nut, 1/2" Hex, NC	1
13	8.718-207.0	Insulation Pancake, 18	1	44	9.802-740.0	Bolt, 1/2" x 3-1/2" NC HH	1
14	8.706-733.0	Bushing, 1/2" Snap	2	45	8.918-423.0	Hose, 3/8" x 22", 2 Wire, Pressure Loop	1
15	9.802-744.0	Bolt, 10mm x 20mm, HH	4		8.918-422.0	Hose 3/8" x 20", 2 Wire (Super Duty Only)	1
16	8.904-536.0	Strapping, 1/2" x 48" w/Clamps	4	46	9.802-672.0	Muffler, Exhaust, Briggs Vanguard Hi-Right (1260SS)	1
17	9.802-188.0	Valve, Metering, 1/4" Hose	1		8.718-040.0	Muffler, Vanguard (1285SSG)	1
18	9.802-064.0	Grommet, Rubber, Nozzle Holder	3		8.750-497.0	Muffler, Honda GX630/660, Right	1
19	8.911-328.0	Lid, 18" OD x 10" ID, Weldment	1		8.739-597.0	▲ Bolt, Flange, M8 x 20 (Honda Muffler)	2
20	8.717-442.0	Insulation, Top Head, 18" OD x 8 ID, Fiberglass	1	47	8.715-070.0	Engine, Vanguard (1260SS)	1
21	8.719-935.0	Ring, Insulation Retainer, 18" Top Hat	1		8.752-149.0	Engine, Honda, GX630R, No Throttle	1
22	8.911-930.0	Coil, 18"	1		8.715-067.0	Engine, Vanguard (1285SSG)	1
	8.912-098.0	Coil, 18" Super Duty Only	1	48	9.802-867.0	Guard, Muffler, Briggs (1260SSG)	1
23	8.717-446.0	Insulation, Blanket, Fiberglass	1		8.749-367.0	Guard, Muffler, Vanguard 21 HP (1285SS/G)	1
24	8.911-331.0	Wrap, Coil Outer Assembly, Hotsy 1200	1	49	6.390-126.0	Clamp, Hose, .46 - .54 ST	4
25	Belts, Please See Specifications Page			50	9.800-006.0	Label, Hot w/Arrows	2
26	8.911-250.0	Belt Guard, Back Plate (1260SS)	1	51	8.707-019.0	Hose Barb, 1/2" Barb x 3/8" MNPT, Brass Hex	1
	8.911-252.0	Belt Guard, Back Plate (Honda Models & Super Duty Option)	1	52	9.802-259.0	Hose, 1/2" Push-On	4"
27	8.911-251.0	Guard, Front Belt (1260SS)	1	53	9.802-151.0	Swivel, 1/2" JIC Female, Push-On	1
	8.911-253.0	Guard, Front Belt (Honda Models & Super Duty Option)	1	54	9.802-126.0	Plug, 1/2" JIC, Flare	1
28	9.802-807.0	Washer, 3/8" SAE, Flat (1260SS) (1270SS, 1280SS, 1290SS)	6 10	55	9.802-254.0	Hose, 1/4" Push-On	24"
29	8.918-425.0	Hose, 3/8" x 29", 2 Wire, Pressure Loop	1	56	8.933-005.0	Pump, 12V Fuel, Facet (Honda Engine)	1
	8.918-426.0	Hose, 3/8" x 32", 2 Wire, (Super Duty Only)	1	57	8.718-582.0	Bolt, 1/4" x 1/2" NC HH (Honda Engine Only)	2 4
30	9.802-038.0	Nipple, 1/2" JIC x 1/2" MPT Pipe	1				
31	8.706-236.0	Tee, 1/2" Street	1				
32	8.706-243.0	Plug, 1/2" Square Head, Galvanized	1				

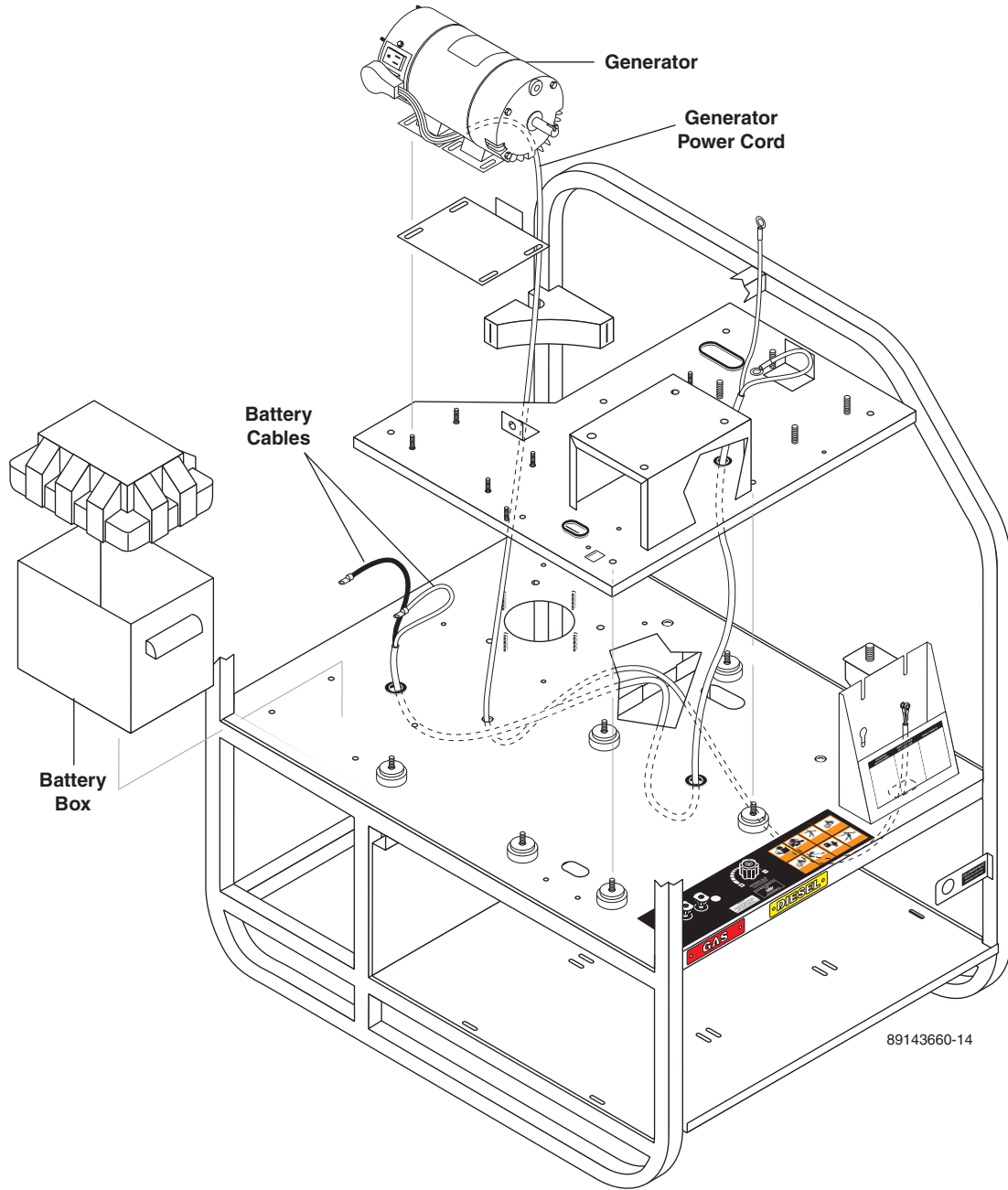
1260SS, 1270SS, 1280SS, 1290SS EXPLODED VIEWS PARTS LIST

ITEM	PART NO.	DESCRIPTION	QTY
58	9.802-039.0	Elbow, 1/2" JIC x 3/8", 90°	1
59	9.802-779.0	Nut, 3/8" ESNA, NC	10
60	8.706-955.0	Hose Barb, 1/4" Barb x 1/8" ML Pipe, 90°(Honda Engine Only)	2
61	8.911-830.0	Slider, Pump, Weldment	1
62	8.932-965.0	Label, Exposed Pulleys	2
63	8.718-937.0	Screw, #8 x 3/4", Phillips, Zinc Plated, Hex, Tek	1
64	9.802-203.0	Clamp, 1/2" RO Clip, Kleinhuis	1
65	8.912-122.0	Platform, Power, 12V Hotsy 1200 Series	1
66	9.803-277.0	Bolt, 5/16" x 1/2", NC HH	3
67		Engine Bushing, Please See Specifications Page	
68		Pump Bushing, Please See Specifications Page	
69	9.802-695.0	Nut, 10/32" Keps	2
70	9.802-830.0	Screw, 1/4-20 x 1/2"	4
71	8.718-039.0	Adapter, Oil Filter	1
72	8.900-282.0	Label, Factory Set RPM	1
73	9.802-171.0	Nipple, 3/8" x 3/8" NPT	1
74		Pump Pulley, Please See Specifications Page	
75	8.718-9400	Screw, #10 x 3/4 Tek	2
76	9.802-868.0	Brace, Vanguard Muffler	2
77	9.802-814.0	Washer, 3/8 Split Ring	1
78	9.802-754.0	Screw, 1/4" x 1/2" Whiz Loc (Vanguard)	2
79	9.802-252.0	Hose, 1/4" x 1/2" Braided Vinyl	24"
80	9.802-252.0	Hose, 1/4" x 1/2" Braided Vinyl	6 ft.
81	8.707-058.0	Strainer	1
82	9.802-778.0	Nut, 5/16" Whiz Loc	4
83	8.704-659.0	Label, Hotsy Logo 5 x 11	2
84	9.800-020.0	Label, Cold Water Inlet	1
85	9.802-754.0	Screw, 1/4" x 1/2" NC Whiz Loc	2
86	8.900-925.0	Label, Hotsy 1200 Series	1
87	8.915-387.0	Deflector, Exhaust, 1-3/8" (Honda Engine Only w/ 1-3/8" Exhaust)	1
	9.802-798.0	▲ Screw, #10-1/2", Tek, HH, SS (1-3/8" Exhaust Trube)	1
88	9.802-794.0	Nut, 1/4" x 1/2" Cage	2
89	9.802-754.0	Screw, 1/4" x 1/2" Whiz Loc (Honda Eng. Only)	4
90	8.719-946.0	Hanger, Hose	1
91	8.706-993.0	Adapter, 3/8" Male x 3/8" Female (Vanguard)	1
	8.750-737.0	Adapter Honda, M20-1.5 x 3/8" FPT (Honda)	1
92	9.802-802.0	Washer, 1/4" Flat, SAE	2

ITEM	PART NO.	DESCRIPTION	QTY
93	8.718-732.0	Screw, 12-14 x 3/4" PL, SLFDR, Hex	1
94	9.802-814.0	Washer, 3/8 Split Ring Lock (Super Duty Only)	3
95	9.802-789.0	Nut 3/8 Hex (Super Duty Only)	6
96	8.706-834.0	Elbow, 3/8" Street, 45°	1
97	8.718-674.0	Bolt 3/8 " x 2-1/4" GR 8.2	6
98	8.753-065.0	#10 Clamp (Honda)	2
99	8.753-269.0	Reducer 1/4 x 3/16 (Vanguard Only)	1
100	9.802-776.0	Nut, 5/16" Nylock	1
101	8.917-015.0	Label, Regulation 4442.6	1
102	8.911-950.0	Insulation Retainer	1
103	8.753-066.0	#7 Clamp (Honda) #10 Clamp (Vanguard)	2 3
104	8.902-353.0	Plate, Guard, Hotsy 1200 Pump	1
105	8.711-785.0	Hose 3/8 Push On/Ft (Honda Only)	8"
106	8.753-270.0	Reducer 1/4 x 3/18 (Honda Only)	1
107	9.802-254.0	Hose 1/4" Push On/Ft	4
108	8.706-728.0	Bushing, 1-3/8", Snap	1
109	8.921-830.0	Plate, Gas	1
110	8.921-831.0	Plate, Diesel	1

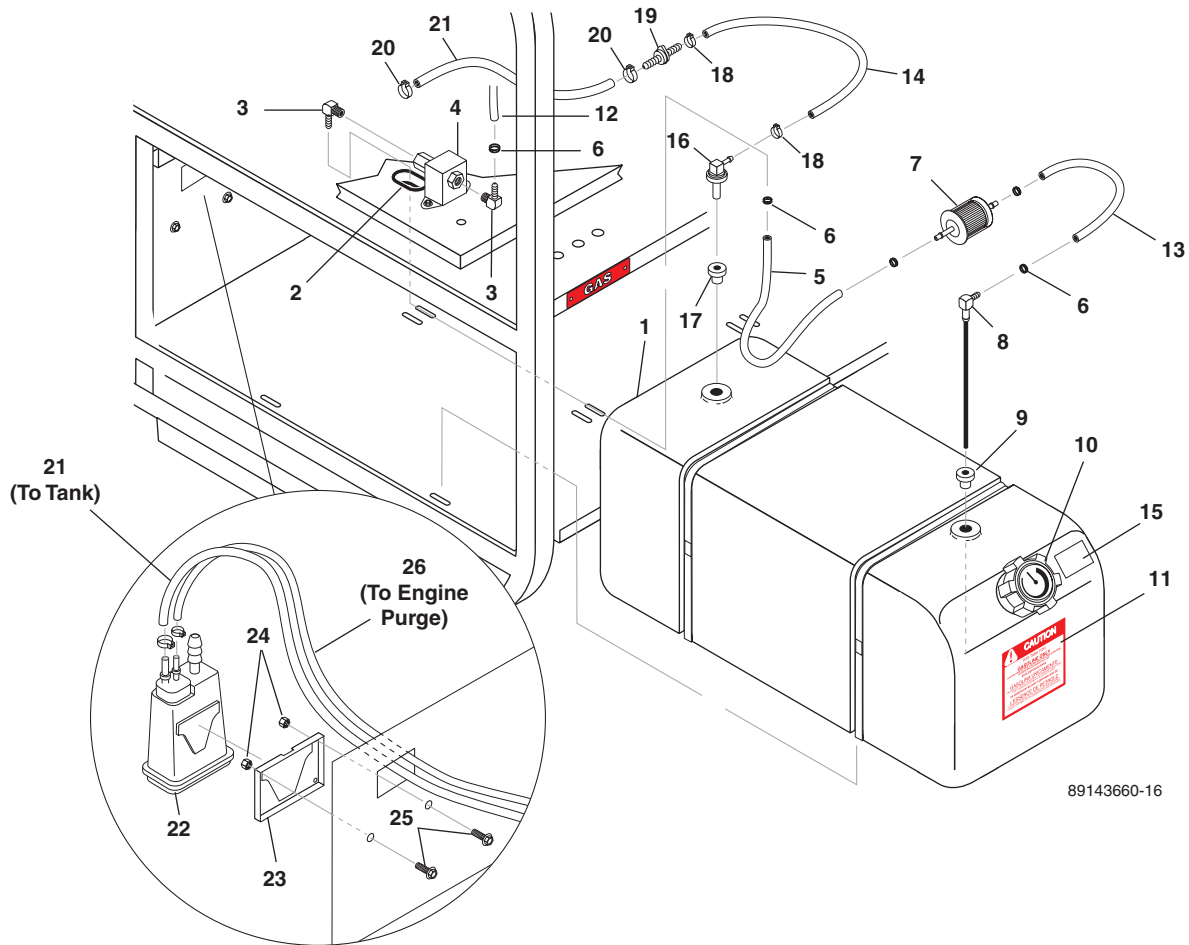
▲ Not Shown

WIRE ROUTING DIAGRAM



89143660-14

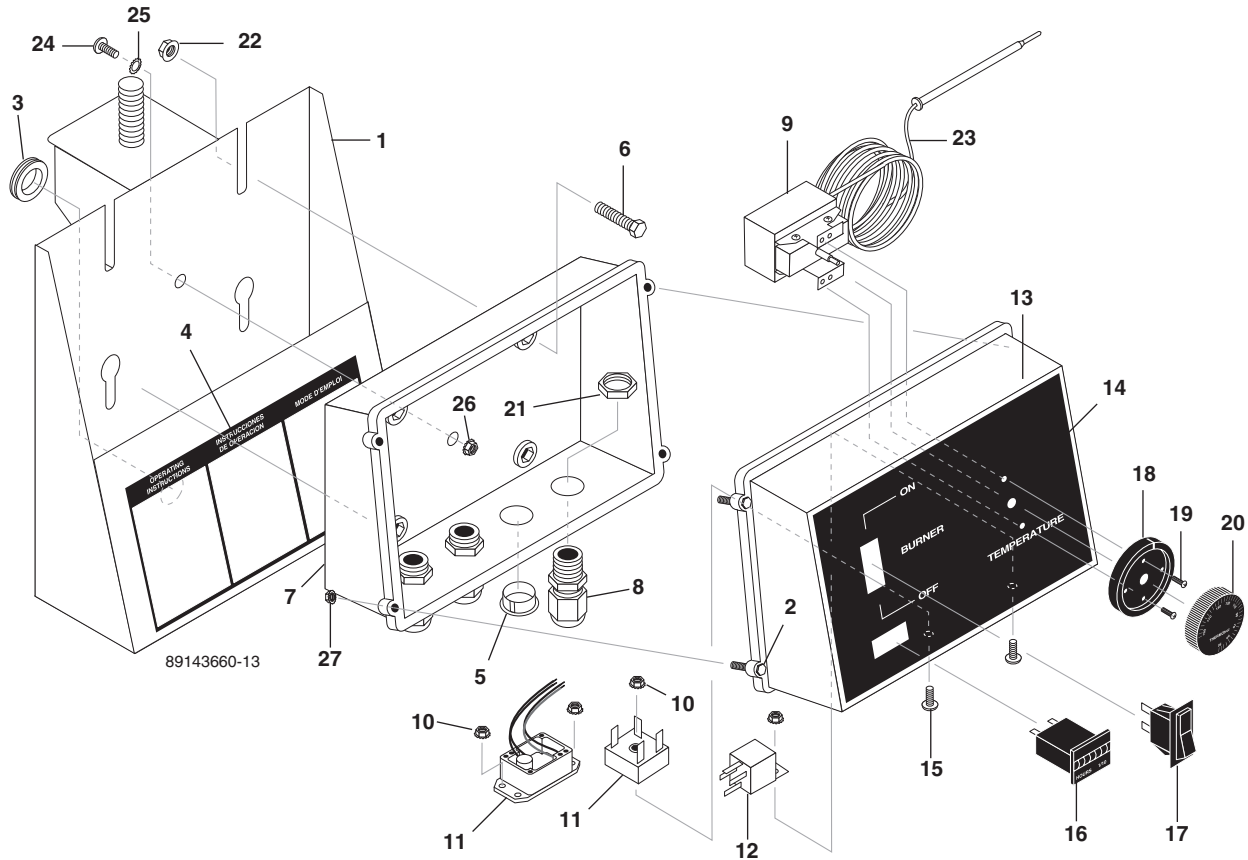
ENGINE GASOLINE TANK EXPLODED VIEW



ENGINE GASOLINE TANK PARTS LIST

ITEM	PART NO.	DESCRIPTION	QTY	ITEM	PART NO.	DESCRIPTION	QTY
1	8.752-916.0	Tank, 11 Gal. Fuel	1	12	9.802-254.0	Hose, 1/4" Fuel (Honda Engine Only)	24"
2	9.802-065.0	Grommet (Honda Engine Only)	1	13	9.802-254.0	Hose, 1/4" Fuel (Honda Engine) (Vanguard Engine)	10" 45"
3	8.706-958.0	Hose Barb, 1/4" Barb x 1/4" Pipe, 90° (Honda Engine Only)	2	14	9.802-254.0	Hose 1/4" Push-On	8"
4	8.933-005.0	Pump, Fuel (Honda Engine Only)	1	15	9.800-008.0	Label, Danger Cool Engine	1
5	9.802-254.0	Hose, 1/4" Fuel (Honda Engine Only)	7"	16	8.751-059.0	Vent ASSY	1
6	6.390-126.0	Clamp, Hose, .46 - .54 ST (Honda Engine) (Vanguard Engine)	5 1	17	8.751-215.0	Grommet, Vent	1
7	8.709-152.0	Filter, Fuel Disposable (Honda Engine Only)	1	18	8.753-066.0	#7 Clamp	2
8	9.803-531.0	Elbow, 90° 1/4" HX Stand Pipe 10.00"	1	19	8.753-270.0	Reducer Conn	1
9	9.802-053.0	Bushing, Molded	1	20	8.753-065.0	#10 Clamp	2
10	8.751-057.0	Cap, Fuel Tank w/Gauge/Ratchet	1	21	8.711-785.0	Hose 3/8 Push On	8"
11	9.800-001.0	Label, Gasoline Only	1	22	8.751-381.0	Carbon Canister	1
				23	8.920-497.0	Brkt, 1.2L Carbon Canister	1
				24	9.802-773.0	1/4" Locknut	2
				25	9.802-770.0	Screw 1/4" BH	2
				26	9.802-254.0	Hose 1/4" Push-On	48"

CONTROL BOX EXPLODED VIEW



CONTROL BOX PARTS LIST

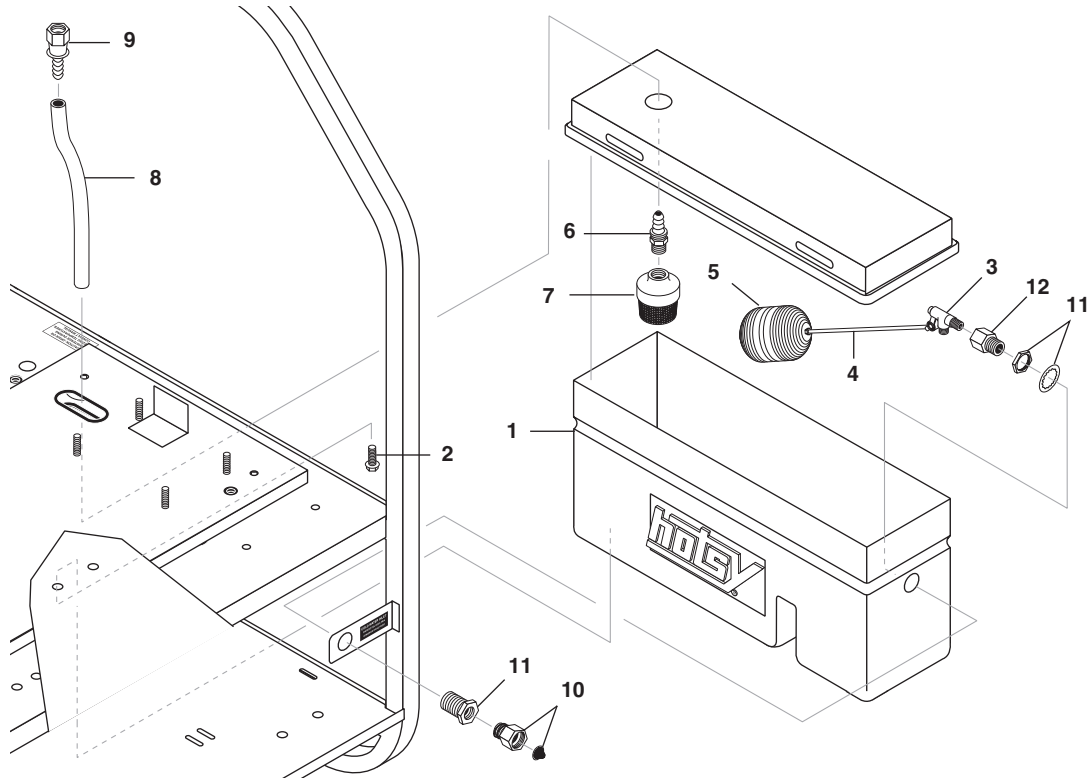
ITEM	PART NO.	DESCRIPTION	QTY	ITEM	PART NO.	DESCRIPTION	QTY
1	8.912-126.0	Bracket, Control Box Mount, Hotsy 1200	1	12	9.802-471.0	Relay, P&B, VF4A-45-H11 24V/40A	1
2	9.803-249.0	Screw, M4 x 10	4		9.802-470.0	Relay, 12V (1270SS, 1280SS, 1290SS)	2
3	9.802-064.0	Grommet, Rubber Nozzle Holder	1	13	8.719-947.0	Box, Plastic Front, 2 Square Holes	1
4	8.900-926.0	Label, Hotsy, 1200 Series Ops Instructions	1	14	8.900-924.0	Label, 1200SSG, Control Box	1
5	8.706-745.0	Plug, Plastic (12V Only)	1	15	9.802-771.0	Screw, 10/32" x 3/4" BH SOC CS (Generator Models 1270SS, 1280SS, 1290SS)	2
6	9.802-700.0	Bolt, 1/4" x 3/4" NC HH	4	16	9.802-283.0	Hour Meter, 120V	1
7	9.802-480.0	Box, Plastic, Back	1	17	9.802-451.0	Switch, Rocker, Carling w/Green Lens (Generator Models)	1
8	9.802-514.0	Strain Relief, Straight, LQ Tite (Generator Models) (Non-Generator Models)	4 3		8.716-036.0	Switch, Rocker (Non-Generator Models)	1
9	8.750-095.0	Thermostat, 2 Meter LG Cap, Hotsy	1	18	8.712-190.0	Plate, Thermostat Plastic Cover	1
10	9.802-695.0	Nut, 10/32" Keps	3	19	8.718-779.0	Screw, 4mm x 6mm, Pan Head	2
11	9.802-530.0	Rectifier, Bridge, MB156 (Non-Generator Models)	1	20	8.750-097.0	Knob, Thermostat 32-248°	1
	8.752-804.0	Regulator, 12 Volt DC (1270SS, 1280SS, 1290SS)	1	21	9.802-525.0	Locknut, 1/2" (Generator Models) (Non-Generator Models)	4 3

CONTROL BOX PARTS LIST

ITEM	PART NO.	DESCRIPTION	QTY
22	9.802-775.0	Nut, 1/4" Flange, Zinc	4
23	8.716-011.0	Conduit, Flexo 1/2" Black, SE50 P-Dro, 500/RL	48"
24	9.802-762.0	Screw, 10/32" x 1-1/4	1
25	8.719-012.0	Washer, 10/32" x 1-1/4"	1
26	9.802-695.0	Nut, 10/32"	4
27	9.803-250.0	Nut	4
28	8.716-206.0	▲ Fuse, ATC 30 Amp (12V Only)	1
29	8.716-223.0	▲ Holder, Fuse (12V Only)	1
▲ Not Shown			

FLOAT TANK EXPLODED VIEW

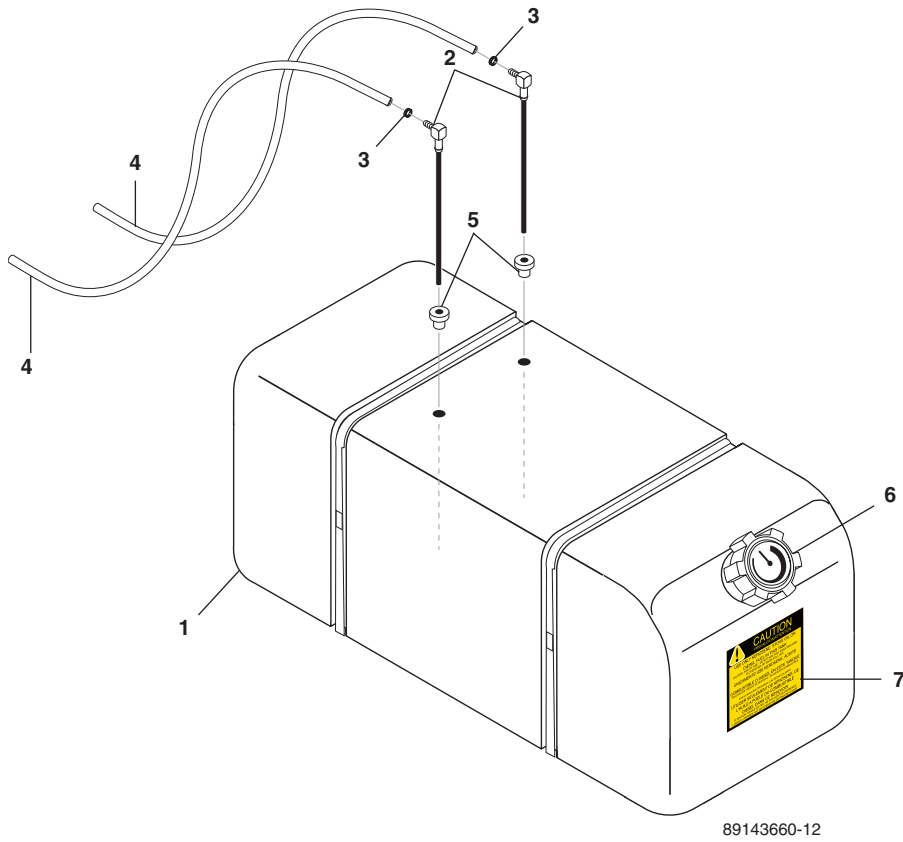
(NOT USED ON SUPER DUTY OPTION)



FLOAT TANK PARTS LIST

ITEM	PART NO.	DESCRIPTION	QTY	ITEM	PART NO.	DESCRIPTION	QTY
1	8.706-642.0	Tank, Float, 4 Gallon w/Cover	1	9	9.802-152.0	Swivel, 3/4" SAE Female, Push-On	1
2	9.802-754.0	Screw, 1/4" x 1/2"	2		9.802-151.0	Swivel, 1/2" JIC Female, Push-On (1260SS/G Only)	1
3	8.749-328.0	Valve, 1/2" Plastic Float	1	10	9.802-146.0	Swivel, 1/2" MP x 3/4" GHF w/Strainer	1
4	8.719-648.0	Rod, 1/4" x 6" Threaded	1	11	8.707-000.0	Connector, 1/2" Anchor	1
5	8.706-512.0	Ball, 4.00 Diameter Plastic Float	1	12	8.706-984.0	Adapter, 1/2" x 1/2" Pipe (Brass)	1
6	8.707-020.0	Barb, 1/2" MPT x 3/4" Barb	1				
	8.706-947.0	Barb, 1/2" Barb x 1/2" MNPT (1260SS/G Only)	1				
7	8.707-061.0	Strainer, 1/2" Basket	1				
8	9.802-261.0	Hose, 3/4" Push-On	17"				
	9.802-259.0	Hose, 1/2" Push-On (1260SS/G Only)	17"				

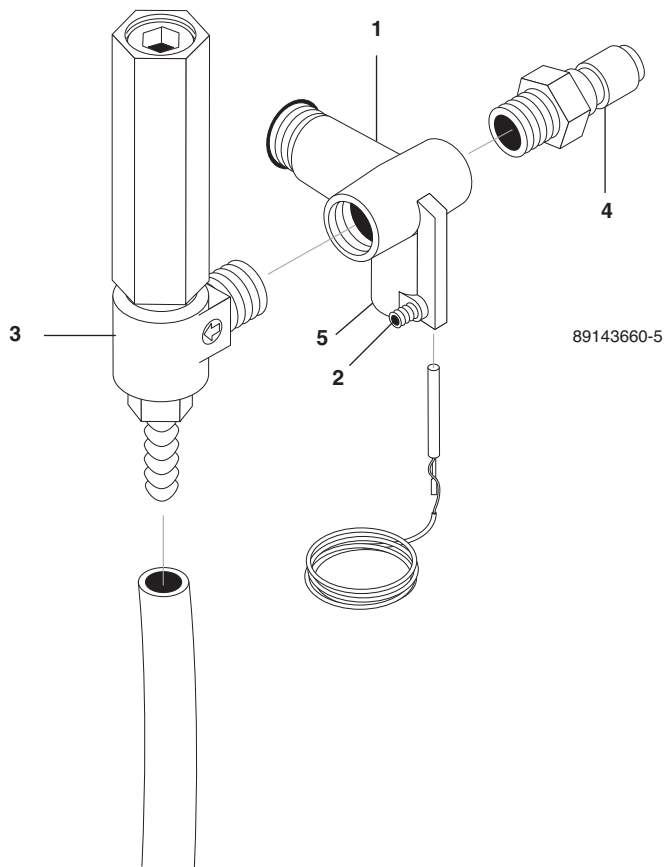
BURNER FUEL OIL TANK EXPLODED VIEW



BURNER FUEL OIL TANK PARTS LIST

ITEM	PART NO.	DESCRIPTION	QTY	ITEM	PART NO.	DESCRIPTION	QTY
1	9.803-533.0	Tank, 11 Gal. Fuel, Black	1	5	9.802-053.0	Bushing Molded	2
2	9.803-531.0	Diptube Assy, Plastic, 10.00"	2	6	9.803-535.0	Cap, Fuel Tank w/Gauge	1
3	6.390-126.0	Clamp, Hose, .46 - .54 ST	2	7	9.800-002.0	Label, Use Only Kerosene	1
4	9.802-254.0	Hose, 1/4" Push-On, Fuel	36"	8	8.706-958.0	Hose Barb, 1/4" x 1/4" MPT, 90°	1

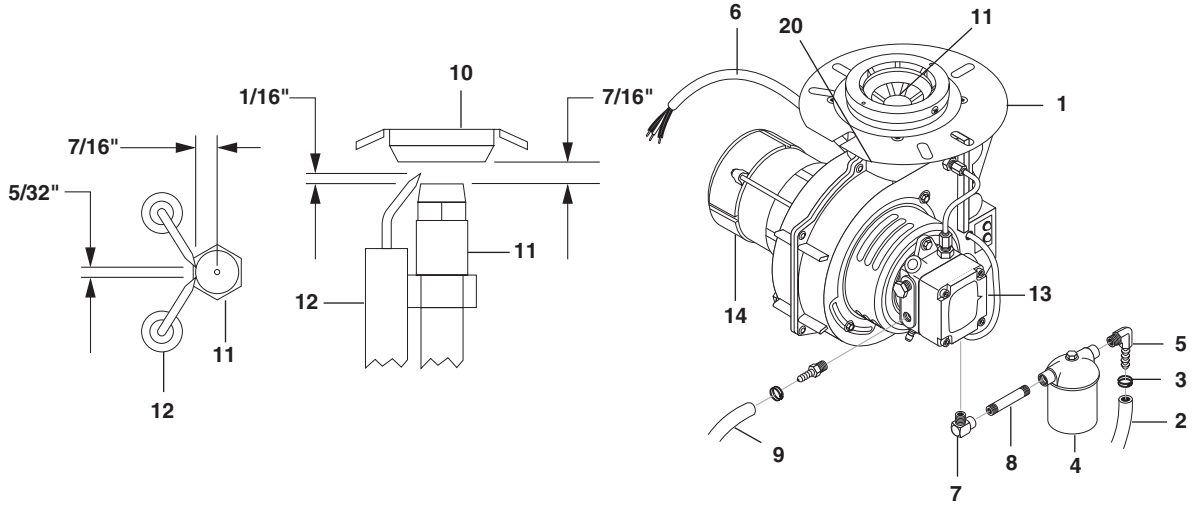
COIL OUTLET EXPLODED VIEW



COIL OUTLET PARTS LIST

ITEM	PART NO.	DESCRIPTION	QTY
1	9.149-003.0	Discharge, Manifold Coil Outlet	1
2	9.196-012.0	Screw, 10-24 x 1/4" Hex Set	1
3	8.902-433.0	Valve, Safety Relief VSA	1
4	9.802-171.0	Nipple, Pipe, 3/8" x 3/8" NPT ST Male	1
5	8.706-248.0	Plug, 3/8" Allen Countersunk	1

BURNER EXPLODED VIEW



89143660-6

BURNER EXPLODED VIEW PARTS LIST

ITEM	PART NO.	DESCRIPTION	QTY	ITEM	PART NO.	DESCRIPTION	QTY	
1	8.717-092.0	Burner, 115V/60Hz, AFG Beckett (Generator Models)	1	13	9.802-645.0	Pump, Cleancut w/115V Valve (Generator Models)	1	
	8.717-108.0	Burner, 12V ADC Beckett (12 Volt Models)	1		9.802-562.0	Pump, Cleancut w/12V Valve (12V Models)	1	
	8.918-908.0	Burner, 120V Crossfire	1		8.700-759.0	Fuel Pump, 120V Crossfire	1	
	8.918-911.0	Burner, 12VDC Crossfire	1		8.700-760.0	Fuel Pump, 12VDC Crossfire	1	
2	9.802-254.0	Hose, 1/4" Push-On, Fuel Line	20"	14	9.802-642.0	Motor, 115/60 1.7Amp, 1/7 HP Beckett (Generator Models)	1	
3	6.390-126.0	Clamp, Hose, .46 - .54 ST	2		9.802-638.0	Motor, ADC 13.5VDC Beckett (12V Models)	1	
					8.750-517.0	Motor, 115V Crossfire	1	
4	8.749-771.0	Filter, Fuel/Water Separator	1		8.751-074.0	Motor, 12VDC Crossfire	1	
	8.749-770.0	Element, Filter, Hotsy (Replacement)						
5	8.706-958.0	Hose Barb, 1/4" Barb x 1/4" Pipe, 90°	1	15	9.802-647.0	▲ Ignitor Assy, Burner, 115V Beckett (Generator Models)	1	
6	9.802-424.0	Cord, 16/4 (115V Burner)	5 ft.		9.802-663.0	▲ Ignitor Assy, Burner, 12V Beckett (12V Models)	1	
	9.802-427.0	Cord, 12/3 (12V Burner)	5 ft.		8.919-114.0	▲ Ignitor, 120V Crossfire	1	
7	8.706-161.0	Elbow, 1/4" Street, 90° Galv	1		8.919-116.0	▲ Ignitor, 12VDC Crossfire	1	
8	9.803-264.0	Nipple, 1/4" x 3", Black Pipe	1	16	9.802-649.0	▲ Fan, Burner Wheel, Beckett	1	
9	8.706-941.0	Hose Barb, 1/4" Barb x 1/4" ML Pipe	1		8.750-520.0	▲ Fan, 120V Crossfire	1	
					8.751-072.0	▲ Fan, 12VDC Crossfire	1	
10	9.802-634.0	Cone, Air, F22, Beckett	1	17	9.802-648.0	▲ Coupling, Beckett	1	
	8.750-781.0	Cone, F22 Crossfire	1		8.750-520.0	▲ Coupling, 20V Crossfire	1	
11	9.802-577.0	Nozzle, Burner, 2.25 90° B Crossfire	1		8.751-073.0	▲ Coupling, 12VDC Crossfire	1	
				12	9.802-669.0	Electrode, Pair, Beckett (Generator Models)	1	18
9.802-668.0	Electrode, Pair, Beckett (12V Models)	1	19		9.802-666.0	▲ Screen, Cleancut Fuel Pump	1	
8.750-778.0	Electrode, Crossfire	1			20	9.802-519.0	Strain Relief, 1/2" Metal	

▲ Not Shown

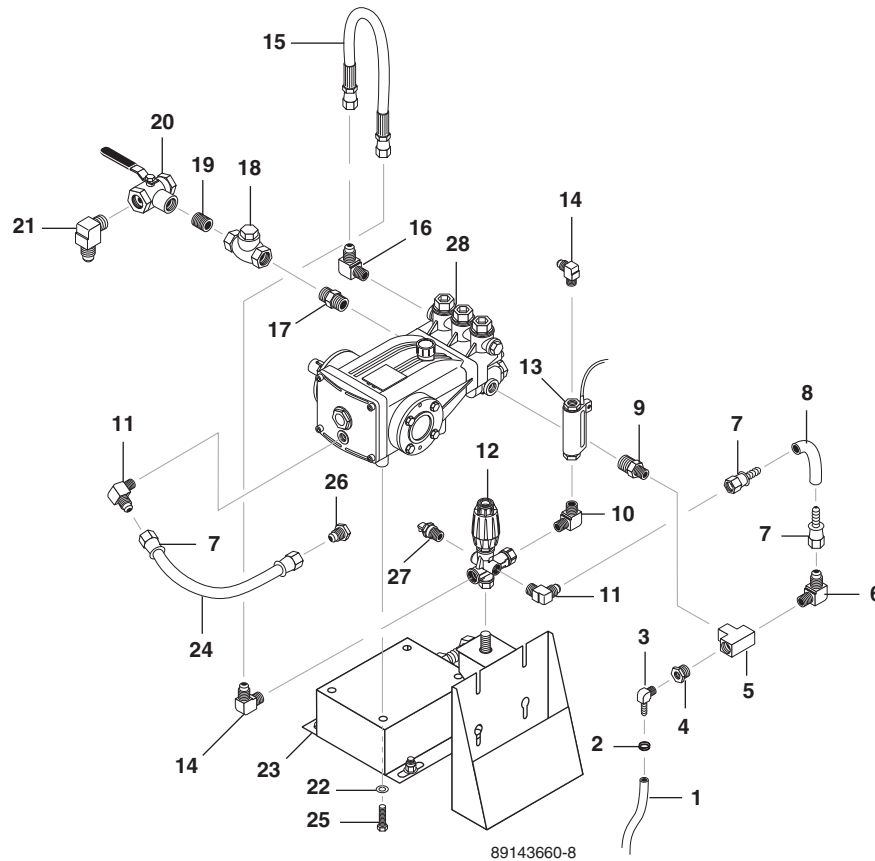
SPECIFICATIONS

Model	PUMP					ENGINE		
	Pump Belt p/n	Pump Belt	Pump Pulley p/n	Pump Pulley	Pump Bushing p/n	Pump Bushing	Engine Pulley p/n	Engine Pulley
1260SS	9.802-420.0	BX43	8.715-592.0	2BK80	9.802-402.0	H x 24MM	9.802-384.0	2BK40
1260SSG	8.715-702.0	BX41	8.715-592.0	2BK80	9.802-402.0	H x 24MM	9.802-393.0	3TB36
1270SS	8.715-705.0	BX44	8.715-593.0	2BK90	9.802-403.0	H x 25MM	9.802-384.0	2BK40
1270SS/G	8.715-703.0	BX42	8.715-593.0	2BK90	9.802-403.0	H x 25MM	9.802-393.0	3TB36
1280SS	8.715-706.0	BX46	8.715-594.0	2B94SK	8.715-647.0	SK x 25MM	9.802-383.0	2BK36
1280SS/G	9.802-420.0	BX43	8.715-594.0	2B94SK	8.715-647.0	SK x 25MM	9.802-392.0	3TB34
1285SS	8.715-706.0	BX46	8.715-594.0	2B94SK	8.715-647.0	SK x 25MM	9.802-383.0	2BK36
1285SSG	8.715-705.0	BX44	8.715-594.0	2B94SK	8.715-647.0	SK x 25MM	9.802-392.0	3TB34
1290SS	8.715-706.0	BX46	9.802-391.0	2BK100	9.802-403.0	H x 25MM	9.802-383.0	2BK36
1290SS/G	8.715-705.0	BX43	9.802-420.0	2BK100	9.802-403.0	H x 25MM	9.802-392.0	3TB34

SPECIFICATIONS

Model	ENGINE (CON'T)			GENERATOR				
	Engine Bushing p/n	Engine Bushing	Gen. Pulley	Generator Pulley p/n	Generator Bushing	Generator Bushing p/n	Generator Belt p/n	Gen. Belt
1260SS	9.802-399.0	H x 1	n/a	n/a	n/a	n/a	n/a	n/a
1260SSG	9.802-404.0	P2 x 1	1B36SH	8.715-578.0	SH x 5/8	8.715-631.0	8.715-671.0	AX28
1270SS	9.802-399.0	H x 1	n/a	n/a	n/a	n/a	n/a	n/a
1270SS/G	9.802-404.0	P2 x 1	1B36SH	8.715-578.0	SH x 5/8	8.715-631.0	8.715-671.0	AX28
1280SS	9.802-399.0	H x 1	n/a	n/a	n/a	n/a	n/a	n/a
1280SS/G	9.802-404.0	P2 x 1	AK30	8.715-524.0	H x 5/8	9.802-397.0	8.715-670.0	AX27
1280SS	9.802-399.0	H x 1	n/a	n/a	n/a	n/a	n/a	n/a
1285SSG	9.802-404.0	P2 x 1	AK30	8.715-524.0	H x 5/8	9.802-397.0	8.715-670.0	AX27
1290SS	9.802-399.0	H x 1	n/a	n/a	n/a	n/a	n/a	n/a
1290SS/G	9.802-404.0	P2 x 1	AK30	8.715-524.0	H x 5/8	9.802-397.0	8.715-670.0	AX27

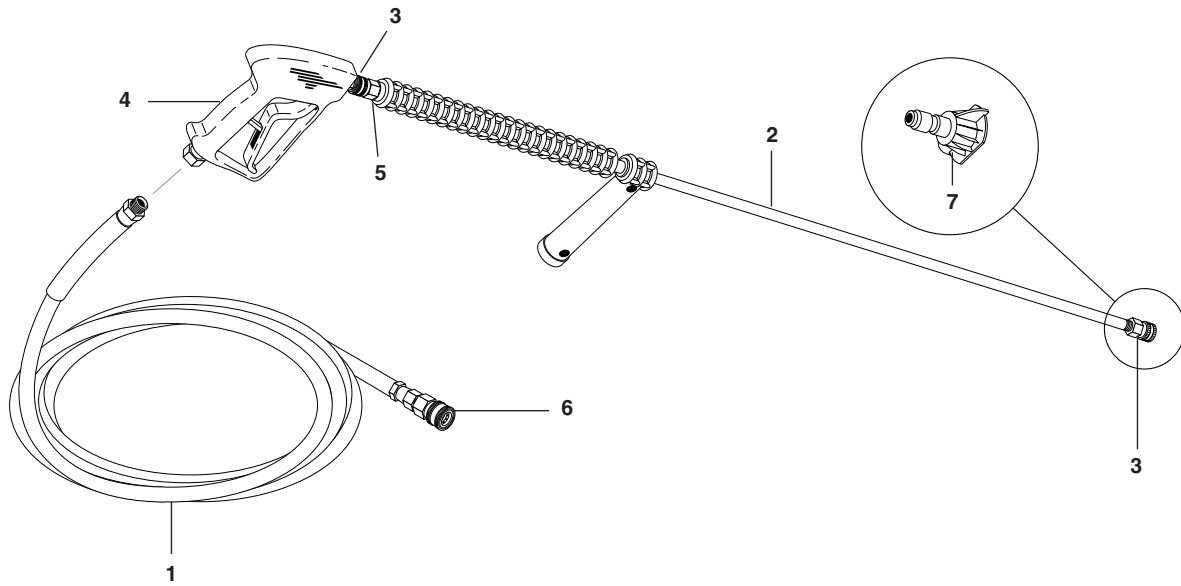
1270SS/G, 1280SS/G, 1285SS/G 1290SS/G PUMP EXPLODED VIEW



1270SS/G, 1280SS/G, 1285SS/G 1290SS/G PUMP PARTS LIST

ITEM	PART NO.	DESCRIPTION	QTY	ITEM	PART NO.	DESCRIPTION	QTY
1	9.802-252.0	Hose, 1/4" x 1/2" Braided Vinyl	24"	16	9.802-040.0	Elbow, 1/2" JIC, 1/2", 90°STL	1
2	6.390-126.0	Clamp, Hose, .46 - .54 ST	1	17	8.706-800.0	Nipple, 3/4" Hex	1
3	8.706-958.0	Hose Barb, 1/4" Barb x 1/4" Pipe, 90°	1	18	8.707-235.0	Valve, 3/4" Brass, Swing Check	1
4	8.706-915.0	Bushing, 1/2" x 1/4" Brass	1	19	8.706-799.0	Nipple, Pipe, 3/4" x Close	1
5	8.706-844.0	Tee, 1/2" Female, Pipe	1	20	9.803-558.0	Valve, 3/4" Ball Brass, 3-Way	1
6	9.802-131.0	Elbow, 1/2" JIC x 1/2", 90°	1	21	9.803-557.0	Elbow, 3/4" SAE x 3/4", 90°	1
7	9.802-151.0	Swivel, 1/2" JIC Female, Push-On	4	22	9.802-807.0	Washer	4
8	9.802-259.0	Hose, 1/2" Push-On	9"	23	8.911-830.0	Rail, Pump Slider	1
9	8.706-881.0	Nipple, 3/4" Pipe x 1/2" Pipe	1	24	9.802-259.0	Hose, 1/2" Push-On	16"
10	8.706-168.0	Elbow, 3/8" Male	1	25	9.802-744.0	Bolt	4
11	9.802-129.0	Elbow, 1/2" JIC x 3/8", 90°	2	26	9.802-126.0	Plug, 1/2" JIC	1
12	8.750-299.0	Unloader, VRT3, 8 GPM @ 4500 PSI	1	27	8.707-254.0	Pump Protector, 3/8" 145°	1
13	8.933-006.0	Switch, Flow, MV60	1	28	8.920-584.0	Pump, HX8043R (1280SS/G, 1290SS/G)	1
14	9.802-039.0	Elbow, 1/2" JIC x 3/8" Male	2		8.920-583.0	Pump, HX5843R.2 (1270SS/G)	1
15	8.918-423.0	Hose, 1/2" x 22", 2 Wire, Pressure Loop	1				

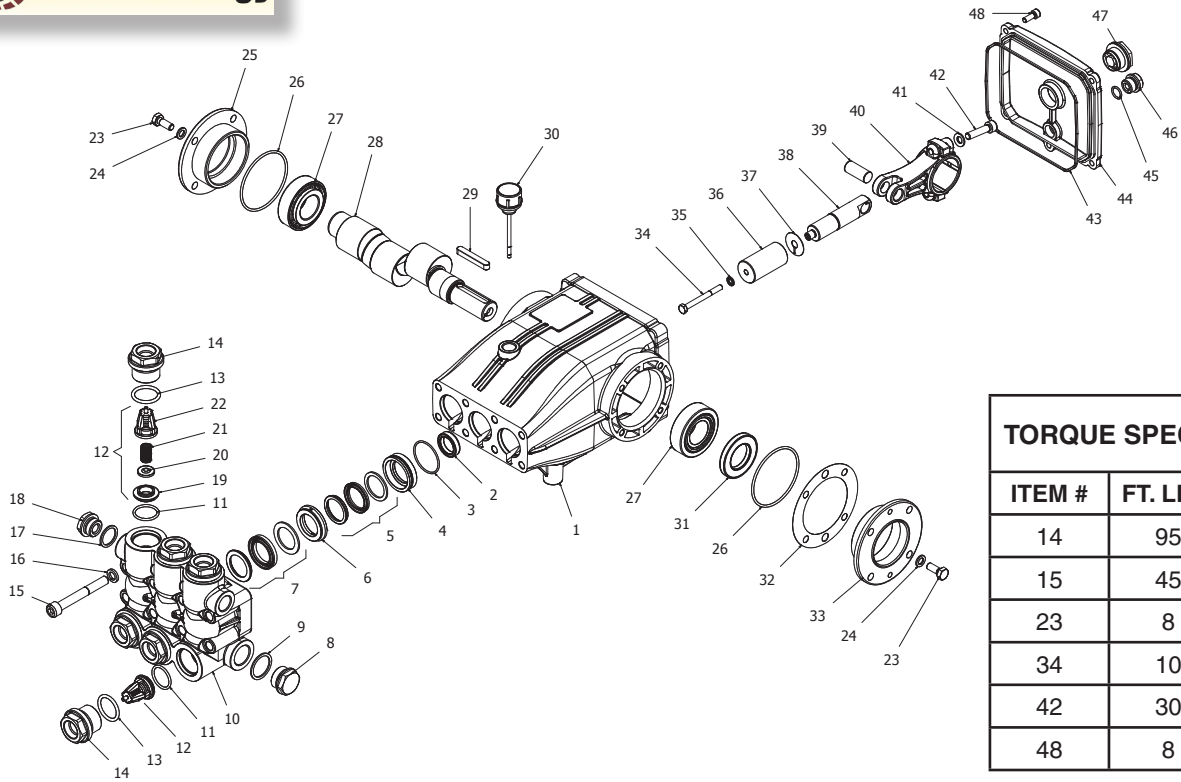
HOSE, GUN & WAND EXPLODED VIEW



HOSE, GUN & WAND PARTS LIST

ITEM	PART NO.	DESCRIPTION	QTY	ITEM	PART NO.	DESCRIPTION	QTY
1	8.739-054.0	Hose, 3/8" x 50', 2 Wire, TUFF Skin	1	7	8.712-352.0	Nozzle, SAQCMEG 4004.5, White (1270SS/G)	1
2	8.725-388.0	Wand, Single, 48" Insulated w/Side Grip	1		8.712-357.0	Nozzle, SAQCMEG 005.5 Red (1280SS/G)	1
3	826169	9.802-164.0 Coupler, 1/4" Female, Brass	2		8.712-358.0	Nozzle, SAQCMEG 1505.5, Yellow (1280SS/G)	1
4	8.751-235.0	Gun, Hotsy, H1050, 5000 PSI, 10.4 GPM	1		8.712-360.0	Nozzle, SAQCMEG 4005.5, White (1280SS/G)	1
5	8.707-139.0	Nipple, 1/4" x 1/4" NPT ST Male			8.712-365.0	Nozzle, SAQCMEG 006.5, Red (1290SS/G)	1
6	9.802-166.0	Coupler, 3/8" Female	1		8.712-366.0	Nozzle, SAQCMEG 1506.5, Yellow (1290SS/G)	1
	9.802-100.0	O-Ring Replacement	1		8.712-368.0	Nozzle, SAQCMEG 4006.5, White (1290SS/G)	1
7	8.712-353.0	Nozzle, SAQCMEG 0005, Red (1260SS/G)	1				
	8.712-354.0	Nozzle, SAQCMEG 1505, Yellow (1260SS/G)	1				
	8.712-356.0	Nozzle, SAQCMEG 4005, White (1260SS/G)	1				
	8.712-349.0	Nozzle, SAQCMEG 004.5, Red (1270SS/G)	1				
	8.712-350.0	Nozzle, SAQCMEG 1504.5, Yellow (1270SS/G)	1				

HX. 2 PUMP SERIES EXPLODED VIEW PARTS LIST



TORQUE SPECS	
ITEM #	FT. LBS.
14	95
15	45
23	8
34	10
42	30
48	8

HX. 2 PUMP SERIES EXPLODED VIEW PARTS LIST

ITEM	PART NO.	DESCRIPTION	QTY
1	8.752-825.0	Crankcase	1
2*	See Kit Below	Plunger Oil Seal	3
3*	See Kit Below	O-Ring Ø1.78 x 37.82	3
4*	See Kit Below	Pressure Ring	3
5*	See Kit Below	U-Seal	3
6*	See Kit Below	Intermediate Ring	3
7*	See Kit Below	U-Seal	3
8	9.803-285.0	Brass Plug, G3/4	1
9	9.803-286.0	Copper Washer 3/4	1
10	8.752-831.0	Manifold Housing Ø22/Ø20/	1
11*	8.752-836.0	O-Ring Ø2.62 x 21.89	6
12*	See Kit Below	Valve Assembly	6
13*	9.803-287.0	O-Ring Ø3.53 x 25.80-134	6
14	8.752-855.0	Valve Plug	6
15	8.752-833.0	Manifold Stud Bolt	8
16	9.802-890.0	Lock Washer	8
17	9.803-199.0	Copper Washer 1/2	1

ITEM	PART NO.	DESCRIPTION	QTY
18	9.802-926.0	Brass Plug 1/2	1
19	See Kit Below	Valve Seat	6
20	See Kit Below	Valve Plate	6
21	See Kit Below	Valve Spring	6
22	See Kit Below	Valve Cage	6
23	8.752-830.0	Hex Screw	8
24	9.802-884.0	Washer	8
25	9.803-182.0	Closed Bearing Housing	1
26	9.803-186.0	O-Ring Ø2.62 x 71.12	2
27	9.803-160.0	Roller Bearing	2
28	8.752-828.0	Crankshaft Ø25 (5843)	1
	8.752-829.0	Crankshaft Ø25 (8043,9536)	1
	8.752-827.0	Crankshaft Ø25 (1036)	1
29	9.803-293.0	Crankshaft Key	1
30	8.752-834.0	Oil Dip Stick	1
31	9.803-139.0	Crankshaft Seal	1
32	9.803-177.0	Shim	2

HX. 2 PUMP SERIES EXPLODED VIEW (CONT)

ITEM	PART NO.	DESCRIPTION	QTY
33	9.803-181.0	Bearing Housing	1
34*	8.752-841.0	Plunger Bolt	3
35*	8.752-820.0	Bonded Seal	3
36*	8.752-846.0	Plunger, 20mm (5843,8043)	3
	8.752-847.0	Plunger, 22mm (9536,1036)	3
37*	8.752-823.0	Copper Spacer	3
38	8.752-842.0	Plunger Rod	3
39	8.752-822.0	Connecting Rod Pin	3
40	8.752-821.0	Connecting Rod	3
41	9.802-889.0	Spring Washer	6
42	9.802-937.0	Connecting Rod Screw	6
43	9.803-194.0	O-Ring Ø2.62 x 152.07	1
44	8.752-826.0	Crankcase Cover	1
45	9.803-906.0	O-Ring Ø1.78 x 14.00	1
46	8.707-262.0	Brass Plug G3/8	1
47	9.803-202.0	Sight Glass G3/4	1
48	8.752-824.0	Cover Screw	5

* Available in kit (See below)

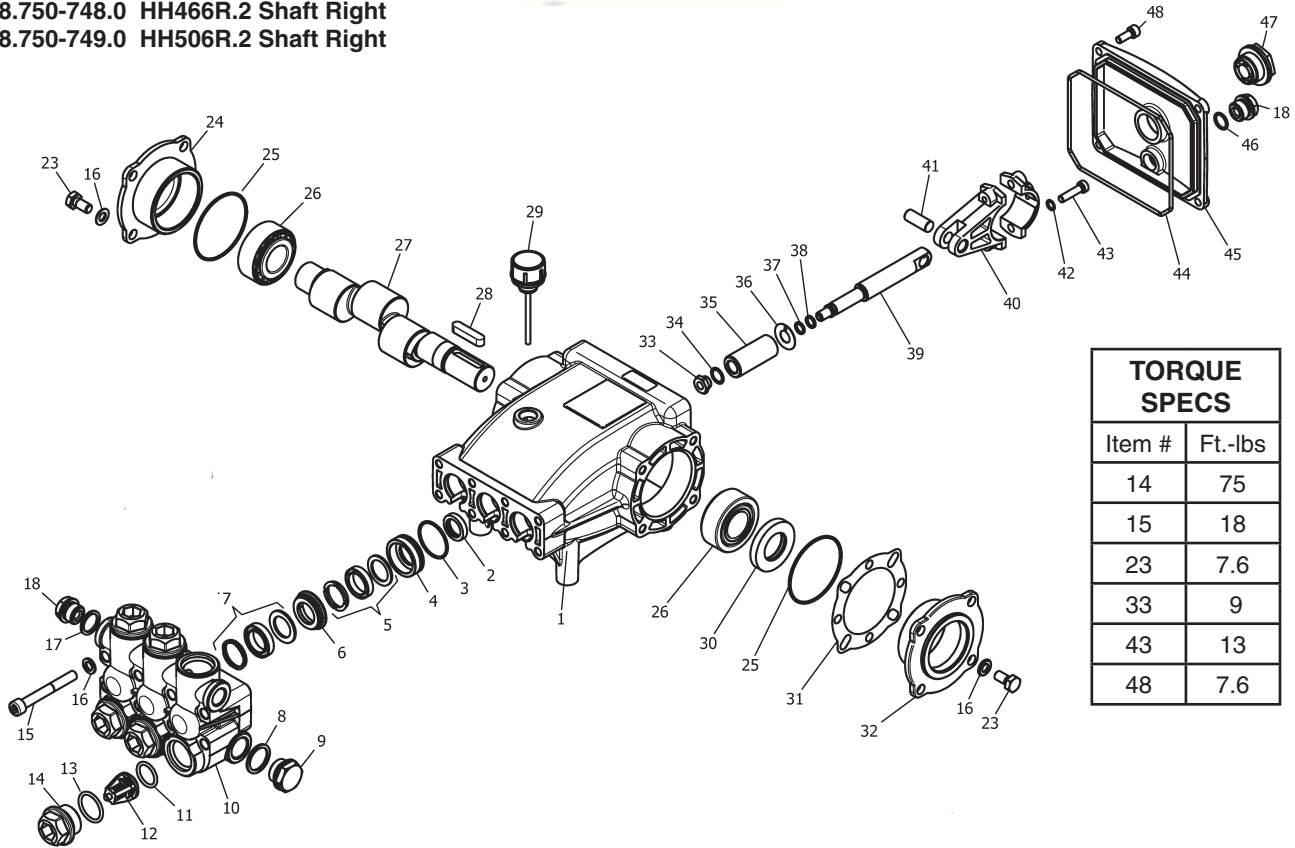
HX. 2 PUMP SERIES EXPLODED VIEW PARTS LIST

KIT NUMBERS	8.752-843.0	8.752-844.0	8.752-849.0	8.752-850.0	8.752-838.0	8.752-839.0
KIT DESCRIPTION	Plunger Seal 20 mm (5843, 8043)	Plunger Seal 22 mm (9536,1036)	Seal Packing 20 mm (5843, 8043)	Seal Packing 22 mm (9536,1036)	Plunger 20 mm (5843, 8043)	Plunger 22 mm (9536,1036)
ITEMS NUMBERS INCLUDED	3, 5, 7	3, 5, 7	3, 4, 5, 6, 7	3, 4, 5, 6, 7	34, 35, 36, 37	34, 35, 36, 37
NUMBER OF CYLINDERS KIT WILL SERVICE	3	3	1	1	1	1

KIT NUMBERS	8.753-349.0	8.752-835.0
KIT DESCRIPTION	Complete Valve	Plunger Oil Seal
ITEMS NUMBERS INCLUDED	11, 12, 13	2
NUMBER OF CYLINDERS KIT WILL SERVICE	6	6

MT. 2 SERIES PUMP EXPLODED VIEW

- 8.750-745.0 HH306R.2 Shaft Right
- 8.750-746.0 HH406R.2 Shaft Right
- 8.750-747.0 HH456R.2 Shaft Right
- 8.750-748.0 HH466R.2 Shaft Right
- 8.750-749.0 HH506R.2 Shaft Right



TORQUE SPECS	
Item #	Ft.-lbs
14	75
15	18
23	7.6
33	9
43	13
48	7.6

MT. 2 SERIES PUMP EXPLODED VIEW PARTS LIST

ITEM	PART #	DESCRIPTION	QTY	ITEM	PART #	DESCRIPTION	QTY
1	8.751-216.0	Crankcase	1	17	9.803-198.0	Washer, Copper	1
2*	See Kits	Seal, Oil, Plunger	3	18	9.802-925.0	Plug, 3/8	2
3*	See Kits	O-Ring, 1.78 X 31.47	3	23	9.802-939.0	Screw Hex 8mm X 18mm	8
4*	See Kits	Ring, Pressure, 20mm	3	24	8.717-210.0	Closed Bearing Housing	1
5*	See Kits	"U" Seal, 20mm	6	25	9.803-192.0	O-Ring, 2.62 X 60.05	2
6*	See Kits	Ring, Intermediate 20mm	3	26	8.933-011.0	Bearing, Roller	2
7*	See Kits	"U" Seal, 20mm	3	27	8.751-221.0	Crankshaft (HH506R.2)	1
8	9.803-199.0	Washer, Copper	1		8.751-220.0	Crankshaft, (HH456R.2)	1
9	9.802-926.0	Plug, Brass 1/2	1		8.751-223.0	Crankshaft, (HH406R.2)	1
10	8.751-219.0	Manifold Housing	1		8.751-222.0	Crankshaft, (HH306R.2)	1
11*	See Kits	O-Ring, 2.62 X 18.72	6		8.717-063.0	Crankshaft (HH466R.2)	1
12*	See Kits	Valve Assembly	6	28	9.803-167.0	Key, Crankshaft	1
13*	See Kits	O-Ring, 2.62 X 23.47	6	29	9.802-921.0	Dipstick	1
14	9.802-924.0	Valve Cap	6	30	9.803-140.0	Crankshaft Seal	1
15	8.717-526.0	Stud, Bolt Manifold	8	31	9.803-178.0	Shim	1
16	9.802-884.0	Washer	8	32	8.717-209.0	Bearing Housing	1

MT. 2 SERIES PUMP EXPLODED VIEW PARTS LIST

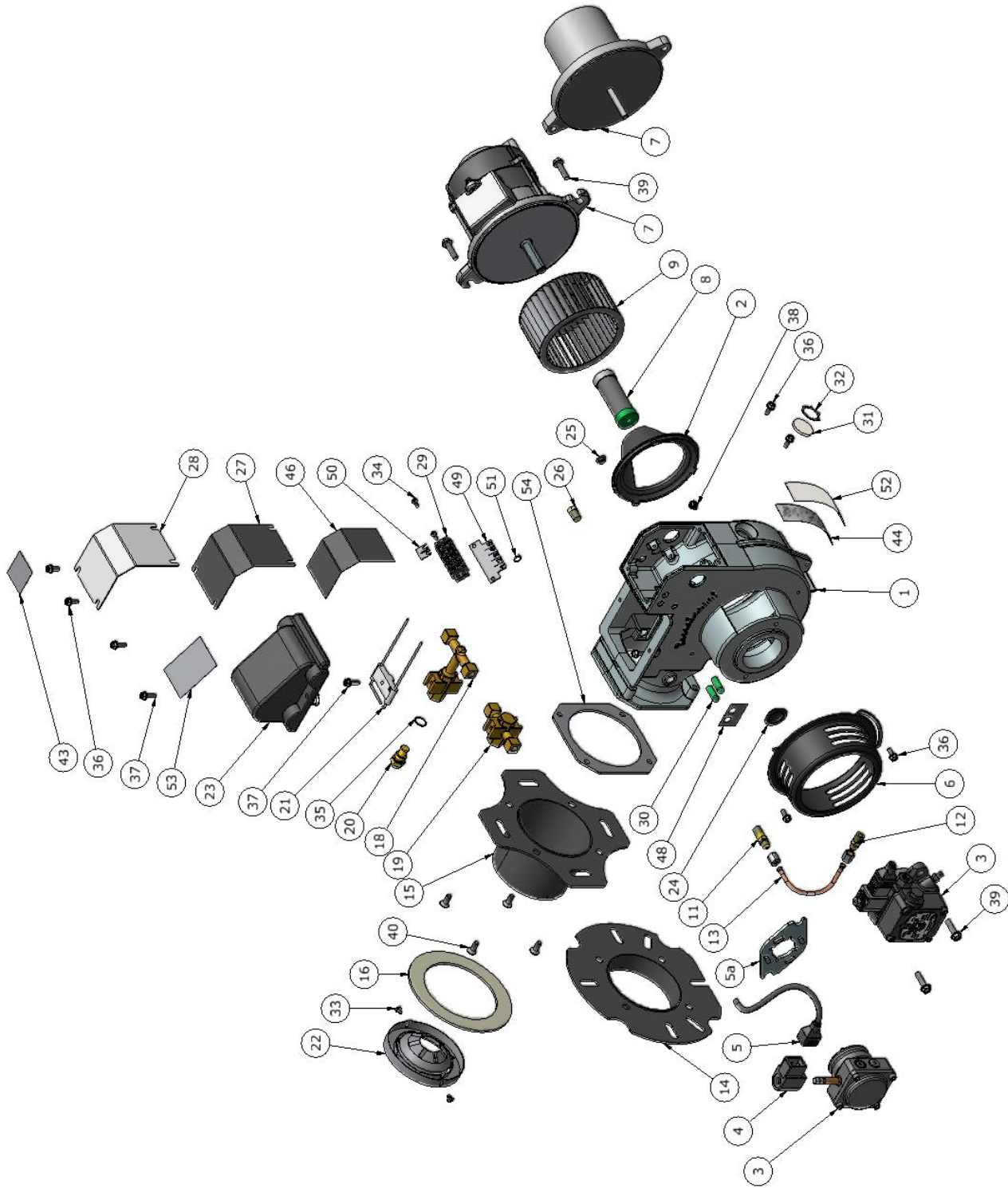
ITEM	PART #	DESCRIPTION	QTY
33*	See Kits	Plunger Nut, M8	3
34*	See Kits	Spacer, Copper	3
35*	See Kits	Plunger, 20mm	3
36*	See Kits	Spacer, Copper	3
37*	See Kits	O-Ring, 1.78 x 7.66	3
38*	See Kits	Ring, Teflon	3
39	8.751-225.0	Rod, Plunger	3
40	9.803-158.0	Connecting Rod	3
41	8.751-228.0	Pin, Connecting Rod	3
42	9.803-218.0	Washer, Spring	6
43	9.803-238.0	Screw, M6 x 25	6
44	8.933-016.0	O-Ring, 2.62 X 126.67	1
45	8.751-229.0	Crankcase Cover	1
46	9.803-906.0	O-Ring, 1.78 X 14	1
47	9.803-202.0	Sight Glass, G3/4	1
48	9.802-939.0	Screw, Cover	4

* Available In Kit (See Below)

REPAIR KIT NUMBER	8.725-362.0	8.725-407.0	8.751-238.0	8.717-584.0	8.717-618.0
KIT DESCRIPTION	Seal Packing 20 mm, 3 Cyl	Packing Assy. 20 mm	Kit, Plunger, 20 mm	Check Valve	Plunger Oil Seal
ITEM NUMBERS INCLUDED	3, 5, 7	3, 4, 5, 6, 7	33, 34, 35, 36, 37, 38	11, 12, 13	2
NUMBER OF CYLINDERS KIT WILL SERVICE	3	1	1	1	3

CROSSFIRE BURNER REPLACEMENT PARTS

For best performance specify genuine Crossfire replacement parts



CROSSFIRE BURNER REPLACEMENT PARTS LIST

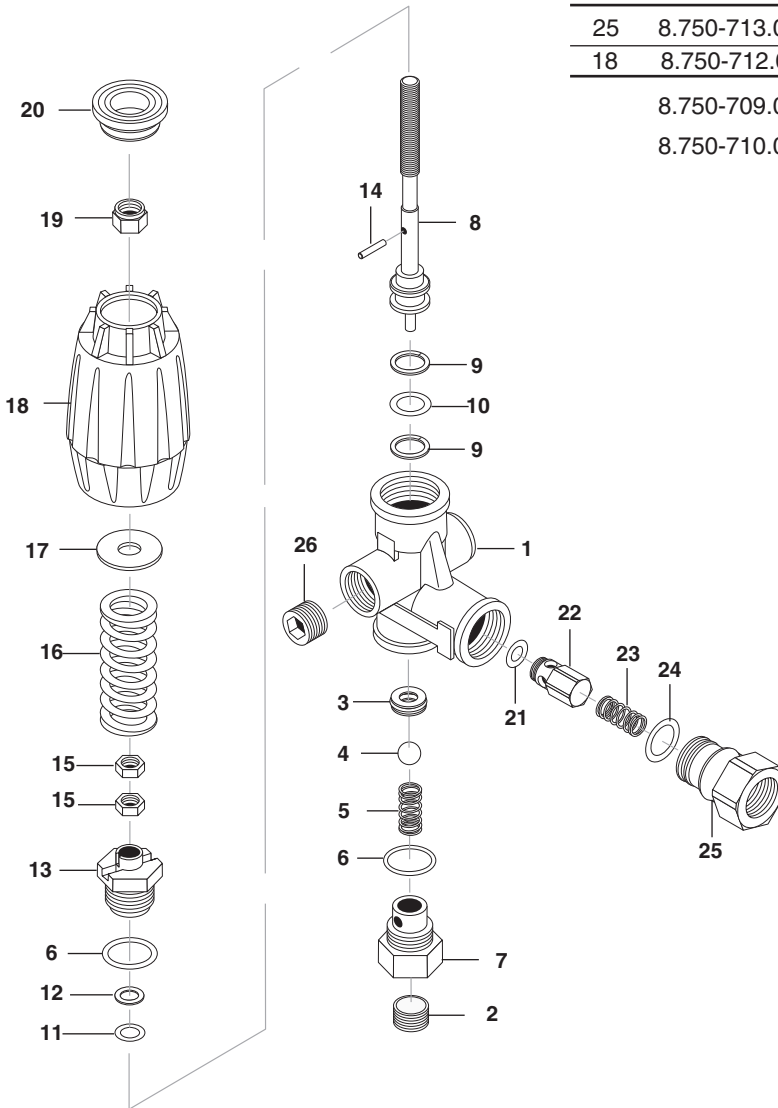
For best performance specify genuine Crossfire replacement parts

Item #	Part #	Description	Qty
25	8.750-830.0	PLUG, HOLE 0.285 PLASTIC	1
26	8.751-134.0	PLUG, 1/8" NPT x HEX SHOULDER	1
27	8.918-454.0	GASKET, JUNCTION BOX	1
28	8.750-542.0	COVER, JUNCTION BOX	1
29	8.750-116.0	BLOCK, TERMINAL, 5 POLE	1
30	8.750-817.0	LIGHT, INDICATOR, GREEN 14V	2
30	8.750-818.0	LIGHT, INDICATOR, GREEN 28V	1
30	8.750-819.0	LIGHT, INDICATOR, GREEN 125V	1
30	8.750-820.0	LIGHT, INDICATOR, GREEN 250V	1
31	8.750-784.0	SITE GLASS	1
32	8.750-785.0	RING, PUSH ON INTERNAL, 1305-112	1
33	8.733-001.0	SCREW, 8 x 1/4" HI LOW THREAD CUT, PPH	2
34	8.718-762.0	SCREW, 8-32 X 1/2", M PH RDH PL	2
35	8.752-137.0	WASHER, COPPER	1
36	8.718-810.0	SCREW, 10/32 x 1/2", WHIZ LOC FLANGE	6
37	8.750-770.0	SCREW, 10/32 x 5/8", WHIZ LOC FLANGE	3
38	8.750-816.0	SCREW, 10/32 X 1/4" GROUNDING	1
39	8.750-768.0	SCREW, 1/4-20 x 1", WHIZ LOC FLANGE	4
40	8.750-771.0	SCREW, 1/4-20 X 1/2", PHIL FHMS	4
42	—	LABEL, BRAND NAME	1
43	9.801-268.0	LABEL, DISCONNECT POWER SUPPLY	1
44	—	LABEL, SERIAL PLATE	1
46	9.807-339.0	LABEL, WIRING DIAGRAM, BURNER 115V-115V	1
46	9.807-340.0	LABEL, WIRING DIAGRAM, BURNER 230V-230V	4
46	9.807-341.0	LABEL, WIRING DIAGRAM, BURNER 230V-115V	1
46	9.807-342.0	LABEL, WIRING DIAGRAM, BURNER 115V-24V	1
46	9.807-343.0	LABEL, WIRING DIAGRAM, BURNER 230V-24V	1
46	9.807-344.0	LABEL, WIRING DIAGRAM, BURNER 12VDC	1
48	9.801-274.0	LABEL, BURNER LIGHTS	1
49	8.919-105.0	PLATE, TERMINAL BLOCK NUMBERS	1
50	8.716-451.0	TERMINAL, JUMPER SPADE	1
51	9.802-510.0	CABLE, TIE, 4" BLACK	2
52	9.807-348.0	LABEL, CLEAR MYLAR	1
53	9.807-345.0	LABEL, IGNITER 120V	1
53	9.807-346.0	LABEL, IGNITER 230V	1
53	9.807-347.0	LABEL, IGNITER 12VDC	1
54	8.751-354.0	GASKET, BURNER TUBE	1

Item #	Part #	Description	Qty
1	8.919-050.0	BURNER HOUSING ASSEMBLY	1
2	8.751-160.0	AIR GUIDE	1
3	8.700-758.0	FUEL PUMP, SUNTEC A2VA-3106 12-24V SOL	1
3	8.700-759.0	FUEL PUMP, SUNTEC A2VA-3106 120V SOL	1
3	8.700-760.0	FUEL PUMP, SUNTEC A2VA-3106 230V SOL	1
3	8.753-000.0	FUEL PUMP, DANFOSS 071N1298	1
4	8.750-762.0	COIL, SOLENOID DANFOSS 230V	1
4	8.750-763.0	COIL, SOLENOID DANFOSS 115V	1
4	8.750-764.0	COIL, SOLENOID DANFOSS 12-24V	1
5	8.750-765.0	CABLE, SOLENOID COIL, DANFOSS	1
5a	8.750-783.0	MOUNTING KIT, FLANGE/HUB, DANFOSS	1
6	8.750-541.0	AIR BAND	1
7	8.750-517.0	MOTOR, 1/6 HP 115V 60Hz	1
7	8.750-518.0	MOTOR, 1/6 HP 230V 60Hz	1
7	8.751-074.0	MOTOR, 1/7 HP 12VDC AMETEK	1
8	8.750-543.0	COUPLING, FLEX, 1/2" x 5/16"	1
8	8.751-073.0	COUPLING, FLEX, 5/16" x 5/16"	1
9	8.750-520.0	FAN, 4.53" X 2.42", 1/2" BORE, F115-625	1
9	8.751-072.0	FAN, 4.53" x 2.42" x .313 BORE, F115-625	1
11	8.750-547.0	CONNECTOR, 37 DEG FLARE X 1/8" NPT, LONG	1
12	8.750-545.0	CONNECTOR, 37 DEG FLARE X 1/8" NPT	1
13	8.749-000.0	FUEL LINE ASSEMBLY	1
14	8.752-034.0	FLANGE, KNA BURNER, 1" TUBE	1
15	8.752-035.0	FLANGE, KNA BURNER, 3" TUBE	1
16	8.750-539.0	GASKET, FLANGE	1
18	8.750-526.0	GUN, ELECTRODE / NOZZLE, 3"	1
19	8.750-525.0	GUN, ELECTRODE / NOZZLE, 1"	1
20	Varies	NOZZLE, FUEL	1
21	8.750-778.0	ELECTRODE, IGNITION, AC	1
21	8.751-342.0	ELECTRODE, IGNITION, DC	1
22	8.750-779.0	CONE, AIR F4	1
22	8.750-782.0	CONE, AIR F6	1
22	8.750-780.0	CONE, AIR F12	1
22	8.750-781.0	CONE, AIR F22	1
23	8.919-114.0	IGNITOR, BURNER 120V	1
23	8.919-115.0	IGNITOR, BURNER 230V	1
23	8.919-116.0	IGNITOR, BURNER 12VDC	1
24	8.751-165.0	PLUG, HOLE 0.875 PLASTIC	1

VRT3 UNLOADER EXPLODED VIEW AND PARTS LIST

8.750-297.0, 8 GPM, 2320 PSI
 8.750-298.0, 8 GPM, 3630 PSI
 8.750-299.0, 8 GPM, 4500 PSI



ITEM	PART NO.	DESCRIPTION	QTY
25	8.750-713.0	Outlet Fitting	1
18	8.750-712.0	Knob, Unloader	1
	8.750-709.0	Repair Kit, VRT3, 2320/3630 PSI	
	8.750-710.0	Repair Kit, VRT3, 4500 PSI	
(Kit Items: 3, 4, 6, 9-12, 21, 24)			

Unloader Adjustment Procedures

1. Remove lock nut (Item 19).
2. Remove adjustment knob (Item 18).
3. Loosen the two (2) nuts (Item 15), move them upward on stem (Item 8) until you see 4 or more threads below the nut.
4. Re-attach adjusting knob (Item 18).
5. Start machine. Open the trigger of the spray gun. Increase pressure by turning adjustment knob (Item 18) clockwise until pressure is at the desired operating pressure.
6. Remove the adjustment knob (Item 18), tighten the lower nut (Item 15) tightly against the upper nut (Item 15). Re-attach adjustment knob (Item 18) and screw down until contact is made with the nuts (Items 15). Screw down lock nut (Item 19) onto the stem (Item 8) until the threads cut into the nylon insert of the lock nut (Item 19).

*If adjustment knob (Item 18) **DOES NOT** make contact with upper nut (Items 15), remove adjusting knob (Item 18), re-adjust (raise) nuts (Items 15) on stem (Item 8) and re-attach adjustment knob (Item 18), then repeat step #6.

If adjustment knob (Item 18) **DOES make contact with upper nut; release the trigger of the spray gun and watch the pressure gauge for the pressure increase ("spike"). This "spike" **SHOULD NOT** exceed 500 psi above the operating pressure. If "spike" pressure exceeds the 500 psi limit, remove the adjusting knob (Item 18) and re-adjust (lower) the nuts (Items 15) on the stem (Item 8). Re-attach the adjusting knob (Item 18), then repeat step #6.